



Big Ideas That Move the World

Foldable All-in-One LED Display

LDS135-152

ViewSonic® 

Big Ideas That Move the World

The ViewSonic® Foldable All-in-One LED Display is designed for instant use, easy delivery, and convenient maintenance. This makes it an ideal rental-ready solution for events, exhibitions, or any other short-term uses. The pre-assembled design and built-in motorized height adjustment stand enable effortless setup within just a few minutes. The new foldable screen design reduces the packaging size of the mobile flight case by nearly 50% compared to previous model, improving delivery convenience and minimizing shipping costs. With the seamless large screen and powerful built-in Harman Kardon® speakers, get ready to impress your audience in any setting from board rooms and receptions to galleries, auditoriums, and other large venues.



LEARN MORE

Pain Points of Traditional Large Format Displays



Complicated Setup

Setting up a large format display at an event venue requires the configuration of power supply, control, image stitching, and display systems. Long set-up times and high technical barriers are commonly experienced by the IT team, which is inconvenient and not cost-efficient especially for short-term exhibitions or events.



Underwhelming Audiovisual Quality

Traditionally, installer will combine multiple LCD screens to gain an ultra-large video wall, thus having grids between the visuals which is hard to engage the audience. Besides, those are seldom equipped with qualified speakers for immersive audio performance.



Complex User Experience

Require specialized technicians to operate under the circumstance of not having integrated software solutions or unclear interface design.



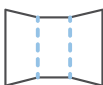
Difficult Delivery and High Shipping Cost

Traditional large format displays are difficult to move around because of their size, which often cannot fit into an elevator and requires special delivery service, costing a lot of effort and money.

Ready-to-Use Audiovisual Solution Perfect for Any Event or Exhibition



Pre-assembled kit with motorized height adjustment stand



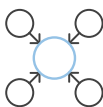
Foldable screen with the mobile flight case for easy delivery



Seamless large display for immersive visual experience



Impressive audio from Harman Kardon® speakers

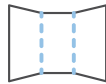


All-in-One integration without complicated setup



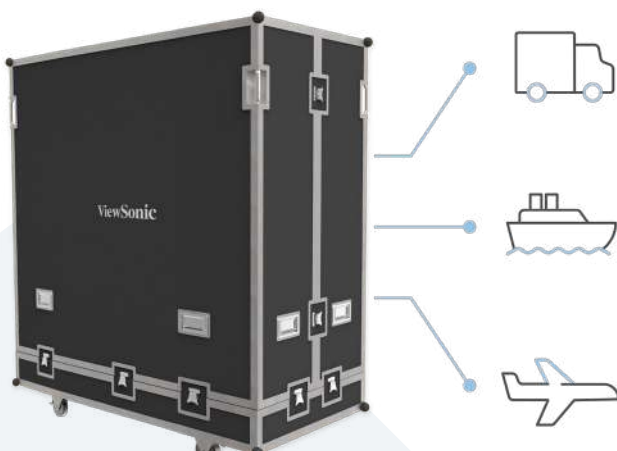
Pre-assembled Kit Ready for Instant Use

The 135" LED display comes pre-assembled with LED modules, cabinets, a system control box, and the motorized floor stand. It can be set up and is ready to use within just a few minutes, saving time and effort as well as lowering the technical barrier for installers.



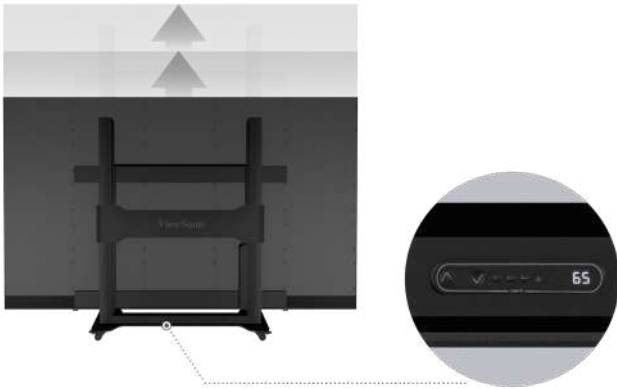
Foldable Screen Enhances Mobility

The foldable screen reduces the flight case's packaging size by nearly 50% compared to previous model, enhancing mobility and minimizing shipping costs. The 135" LED display can be easily moved to different spaces and fit into traditional freight elevators as well as large passenger elevators, minimizing costs and maximizing convenience.



Convenient Delivery with the Mobile Flight Case

The mobile flight case design provides secure protection for the advanced LED display and makes for swift and effortless delivery from one venue to another.



Built-in Motorized Height Adjustment Stand

With a built-in motorized floor stand, you can easily adjust the height to a maximum range of 65cm by using the control buttons. To conveniently facilitate recurring use of the stand you can save up to 3 different height preferences.

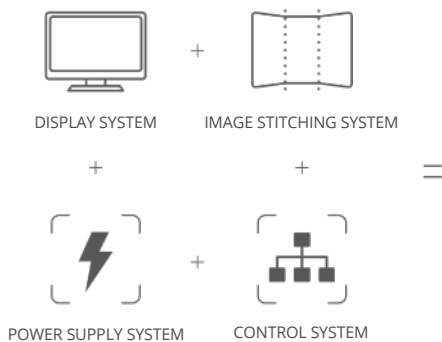


Easily Relocated with the 360° Silent Wheels

With the 360° silent wheels and the push-button lock feature, freely move and position the impressive LED display anywhere you want - even after unpacking it from the flight case.

All-in-One Integration for Effortless Setup

No more complicated configuration of power supply, control, image stitching, and display systems - all you need to do is turn the display on.





Bezel-Less Large Screen Design for Engaging Visuals

With a huge 135" screen - larger than nine 46" LCD displays combined - this frameless display seamlessly delivers content without obvious gridlines for a more immersive visual experience. Impress your audience with engaging visual impact.



LCD ViewSonic Direct View LED



True-to-Life Colors that Shine Bright Anytime

ViewSonic's proprietary Cinema SuperColor+ Technology features a 120% Rec.709 wide color gamut delivering astonishingly vivid colors. 600 nits high brightness with 8-level adjustments ensures incredible clarity anytime.



HDR Off HDR On

Captivating Pixel-Perfect Details

Featuring a lightning-fast 4,440 Hz refresh rate, 1.5mm fine pixel pitch, and greater contrast ratio, you can enjoy slick motion and superbly crisp visuals on every video, presentation, or conferencing session. The display is 1080p FHD that supports 4K and HDR/HLG for engaging visuals.



Powerful Sound from Harman Kardon® Speakers

Equipped with studio-grade Harman Kardon speakers, you can soak in high-fidelity audio that is tuned to pinpoint clarity no matter where you're standing. The dual 20W sets of professional passive radiators, woofers and tweeters deliver impressive sound for a true audiovisual feast.



Wireless Content Sharing from Smart Devices

The pre-installed vCast enables content to be wirelessly streamed from one or multiple smart devices to the display at the same time.



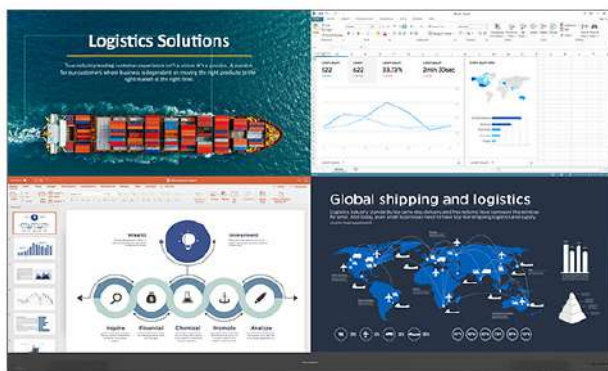
Intuitive Operation with Embedded OS and Wi-Fi

With built-in OS and 2.4G/5G Hz Wi-Fi, users can easily work in a familiar PC environment for app installation, web browsing, multimedia play, wireless device connection, etc.

Seamless Collaboration with Split-screen Modes

Intuitive split-screens enable more flexible and creative video conferencing and online collaboration. The display can support Picture-by-Picture (up to 4 different inputs) or Picture-in-Picture (a screen within another screen) scenarios in real-time.*

**Both scenarios only work with the HDMI input source*



Picture-by-Picture



Picture-in-Picture

User Scenarios



Event Venue



Gallery



Banquet Hall



Reception Room



Auditorium

► Specifications

LDS135-152	
Screen Size	135"
Display Size (mm)	3000 (H) x 1687.5(V)
Native Resolution	1920x1080
Panel Technology	Direct View LED
LED Package Type	SMD 3-in-1
Pixel Pitch (mm)	1.56
Refresh Rate	4440Hz
LED Grayscale	14bits
Brightness (max.)	600 nits (8 level adjustable)
Contrast Ratio (typ.)	6000:1
Viewing Angles (typ.)	H=160, V=160
LED Lifetime (typ.)	100,000 Hours
RAM	DDR4 4GB
Local Storage (Total/Availbale)	64GB / 56GB
Resolution Support	VGA (640x480) to 1080p (1920x1080)
Input	
HDMI	x 6 (HDMI 2.1 x 1, HDMI 2.0 x 3, HDMI 1.4 x 2)
USB Type A	x3 (USB2.0 x3)
RJ45 Input (Internet)	x1
IR In	x1
Wi-Fi Input	2.4G/5G Hz
USB Type C	x1 (Video Input, Power Output (5V/2A))
Output	
HDMI Out	x2 (HDMI 2.0 External x1, Internal x1)
Speaker	20W x2 (Harman Kardon)
Audio Out (3.5 mm)	x1
USB Type A (Power)	Shared with USB input (5V/1A x3)
Control	
USB Type A	x1 (shared with USB A input)
R232 (DB 9-Pin Female)	x1
IR Receiver	x1
Others	
Power Supply Voltage	100-120V/30A- 50/60Hz or 220-240V/15A-50Hz (vary by country)
Power Consumption	1500W (typ), 2500W (max) < 0.5W (Sleep), < 0W (Off)
Ingress Protection Rating	IP30
Carton	Flight Case
Net Weight	564 lbs (253 kg)
Gross Weight	998 lbs (453 kg)
Screen Dimensions (WxHxD)	1800x1963x770 mm(min.), 3010x2613x770 mm(max.)
Packing Dimensions	1900x2032x800 mm
OSD Language / User Guide Language	English, French, Spanish, German, Russian, Dutch,T-Chinese, S-Chinese,Turkish, Arabic (total 10 Languages)
Standard Accessories	
Power Cord	x1
LAN Cable (Cat 5A)	x1 (5m)
Remote Control	x1
QSG	x1
Spare Parts	LED PCB Unit x7
Maintenance Tool	LD-MK-001 x1
Optional Accessories	
Maintenance Tool	LD-MK-001
ViewBoard Cast Button (USB-C)	VB-WPS-001
ViewBoard Cast Button (USB-A+HDMI)	VB-WPS-003



ViewSonic Region Operations
ViewSonic Office Location

Put Your Address Here Put Your Address
Here Put Your Address Here

Tel: 012-345-6-7890-1234 (operator)
Fax : 012-345-6-7890-1234 (9th fl. / exec. oce)

Copyright

All rights reserved by ViewSonic Corporation. All other Corporate names and trademarks are the property of their respective companies. E&EO. All specifications are subject to change without written notice. Images are for illustrative purpose only. Oers and programs may vary by country. Please contact your local ViewSonic oce for more information. Copyright© ViewSonic Corporation 2000-2021 . All rights reserved