



ColorPro[®]

Your Vision. Precisely.

Professional Displays

ViewSonic[®] | ColorPro[®]

4 **ColorPro® Introduction & DNA**

6 **Designed for Professionals. By Professionals.**

Color Accuracy at Command
ColorPro® Global Community

8 **ColorPro® VP86**

Premium Certificated Monitor for Pro-photographers

10 **ColorPro® Wheel**

12 **ColorPro® VP85**

4K UHD Professional Monitor for Pro-photographers

14 **ColorPro® VP81**

Ultra-wide Curved Display for Video Editing

16 **ColorPro® VP76**

A Total Solution for Pro-vloggers

18 **ColorPro® VP68**

Start Your Creative Journey

20 **ColorPro® VP56**

Showcase Your Perspective

22 **ColorPro® VP16**

1st On-the-go Portable Monitor with Versatile Stand

24 **ColorPro® Software**

vDisplay Manager
Colorboration+
ColorPro® Sense
ColorPro® Integrate

28 **ColorPro® Spec Line-up**

For Best Color Performance
Designed for a Smoother Workflow

30 **ColorPro® Spec table**

Your Vision. Precisely.

ViewSonic's ColorPro® professional monitor series delivers stunning, color-accurate, true-to-life images with industry color standards including sRGB, DCI-P3 and Adobe RGB.

ColorPro® series professional monitors are designed to make creative work easier.

Whether you're a photographer, designer, video editor, illustrator, or other type of creative professional, ViewSonic ColorPro® monitors give you the clarity, accuracy, and detail you need to bring out the best in your creations.

www.viewsonic.com/colorpro



Photographer



Videographer



Animator



Web Designer



Digital Artist



Illustrator



3D Printer



Screen Printer



Music Producer



Designed for Professionals. By Professionals.

Color Accuracy at Command

◆ Flawless Color Out-the-box

Every ViewSonic ColorPro® monitor is delivered pre-calibrated and with a comprehensive report, so you are ensured Delta E<2 value with perfect color performance right out the box.

**Specification varies depending on the model.*

◆ Long-term Color Consistency

To ensure and maintain this color accuracy over time, ColorPro® monitors are also calibration-ready. Our easy-to-use sophisticated profiling software Colorbration+ and ColorPro® Wheel* lets you maintain infinite control of all related color control concepts, as well as calibrating and profiling your monitor.

**VP76 and VP86 series only*

◆ Always Accurate Color

ViewSonic's high-performance SuperClear IPS monitors combine the art and science of amazing color to bring innovation to the forefront.

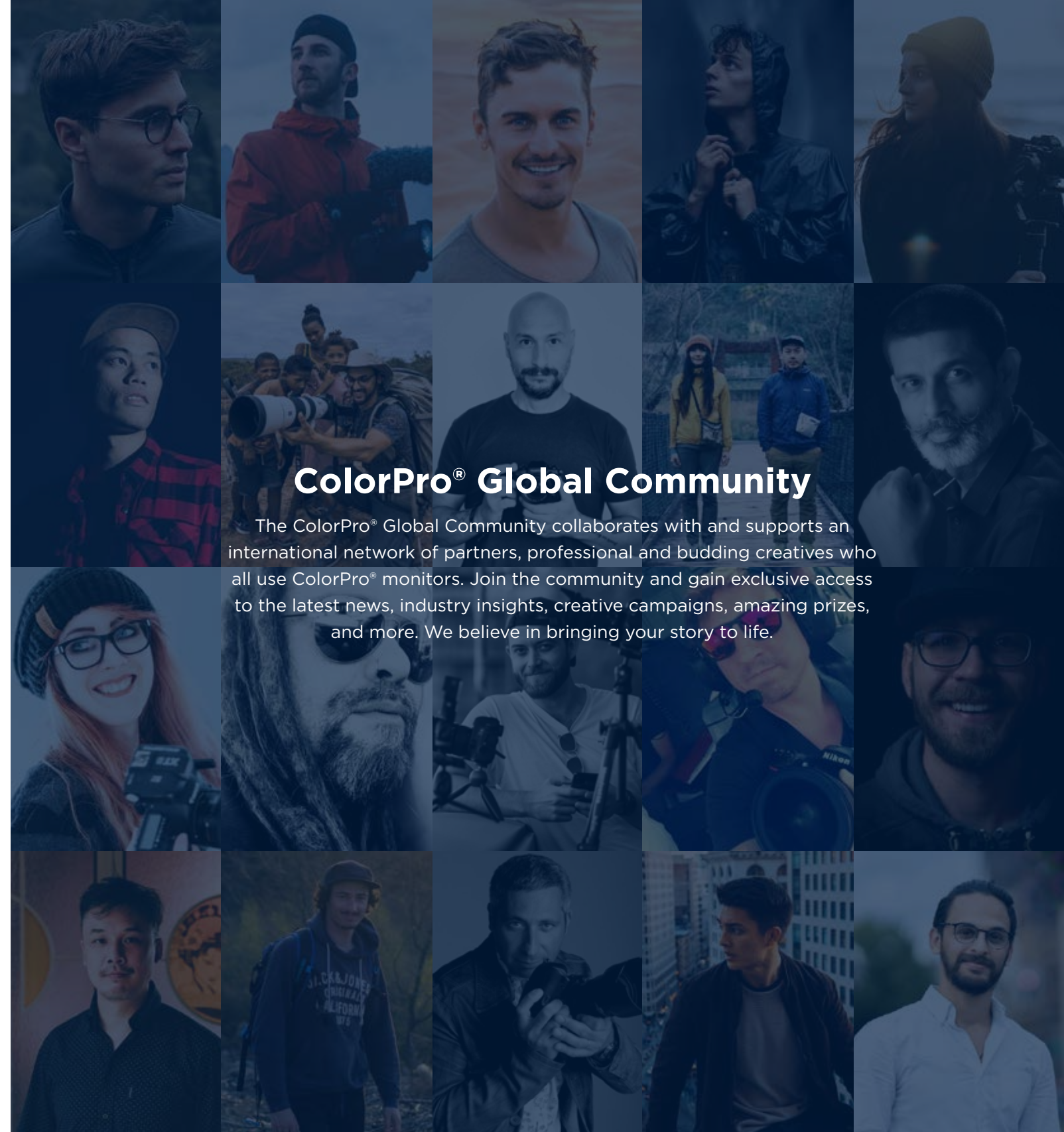
- Generate a stunning palette of 4.39 trillion colors for accurate image reproduction.
- Deliver stable brightness, color, and hue across all viewing angles with 8/10-bit IPS panels.
- Ensure consistent color and luminance across the screen—always getting screen-wide true color with the integrated color uniformity function.

◆ Globally Recognized Media Awards

We're thrilled that our ColorPro® monitors have received hundreds of awards over the past 5 years (2018-2023).



Visit viewsonic.com to find your product's color report



ColorPro® Global Community

The ColorPro® Global Community collaborates with and supports an international network of partners, professional and budding creatives who all use ColorPro® monitors. Join the community and gain exclusive access to the latest news, industry insights, creative campaigns, amazing prizes, and more. We believe in bringing your story to life.

ColorPro Partners

LUKE STACKPOOLE	United Kingdom	RANJAN SHARMA	India
SAM NEWTON	USA	RENEE ROBYN	Canada
MARK HARRISON	USA	NAT JONES	USA
JUSTKAY VP2776	Netherlands	MATTHEW VANDEPUTTE	Australia
ALICE GREENFIELD	United Kingdom	DAVID KÖSTER	Germany
OGIK JATMIKO	Austria	PATRICK FEUERER	Germany
SASAN AMIR	Germany	HOMARD PAYETTE	France
JOAN VENDRELL	Spain	MAXIME RAMBAUD	France
A TAI DAI-DAI	Taiwan	FRANK DISEGNI	France



Visit colorpro.partner.com for more partners

Premium Certificated Monitor for Pro-photographers

Beauty in the Details

Artists render fleeting moments of beauty with their vision. Eyes always scanning their environment, in search for inspiration. With 100% Adobe RGB, True 10bit Color, Fogra, and Idealliance Certification, quality of colors and soft-proofing are guaranteed. Verify your colors and broaden your palette with ColorPro® Sense's Pantone integration. See it, dream it, and print it. Beauty in the details.



VP86 Series x *Luke Stackpoole*

"Modern day cameras and film are slowly but surely pushing the boundaries of resolution and so for me it's important to have a monitor that can display these resolutions easily."

Lifestyle & Adventure Photographer
Personal Website: <https://www.withluke.com/>
@withluke

- ◆ **The Visible Difference**
4K UHD (3840* 2160) resolution IPS panel with frameless design.
- ◆ **Ultimate Precision**
100% Adobe RGB & 98% DCI-P3 with True 10-bit Color.
- ◆ **Perfect From Screen to Print**
Fogra and Idealliance Certification for flawless soft proofing and print-out quality.
- ◆ **Professional Work Bundle**
Our award-winning ID design, ColorPro® Wheel, detachable hood, and built-in backstage light provide pro-photographers with an immediate and ideal office setup.
- ◆ **Maximum Palette Power**
By leveraging the Pantone system, the exclusive ColorPro® Sense empowers you to detect and choose hues to find the closest Pantone color match and offers suggestions.



Premium Certificated Monitor for Pro-photographers

ColorPro® Wheel

Sensitivity, balance and perfect alignment harmonize in the ColorPro® Wheel interface. Instant color adjustments are just an intuitive click or spin away. Be amazed by how quickly it will feel like an organic extension of your own hand.



Simplify Color Calibration

The ColorPro® Wheel makes color calibration fast and accurate. By integrating the imbedded color sensor with Colorbration+ software, you can control your colors and workflow with confidence.



Intuitive Display Adjustments

No more fiddling with the bezel buttons—the ColorPro® Wheel provides easy access to on-screen display parameters. Click and turn to adjust brightness, contrast, and all other settings.



Palette Power Maximized with ColorPro® Sense (see ColorPro® Software)

Connect the exclusive ColorPro® Sense to get the Pantone Digital Color online data for the closest color match.



Supercharge Your Workflow with ColorPro® Integrate (see ColorPro® Software)

Instantly access the most used creative editing software including Adobe Photoshop, Premiere and Capture One.



4K UHD Professional Monitor for Pro-photographers



Precision at Its Peak

Covering 100% of the Adobe RGB color space and 96% DCI-P3, the ViewSonic VP85 series monitors meet the high color standards of photographers, graphic designers, video editors, print departments, and other design professionals.

◆ The Visible Difference

Up to 4K UHD (3840*2160) resolution IPS panel for high-definition multimedia.

◆ Ultimate Precision

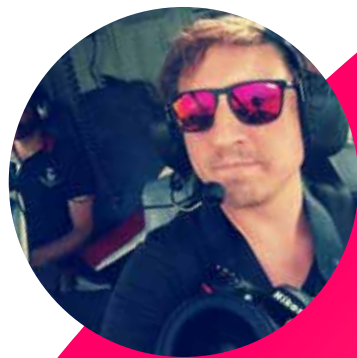
100% Adobe RGB and 96% DCI-P3 with True 10-bit Color.

◆ Perfect From Screen to Print

Fogra Certification guarantees flawless soft proofing and print-out quality.

◆ Long-term Color Consistency

Hardware calibration support for aligned communication between the graphics card and the monitor.



VP85 Series x *David Köster*

"The issue of color fidelity and thus the possibility of hardware calibration are also very important to me. After all, the viewer should perceive my works exactly as the artist intended, regardless of whether he sees them on the screen, in a magazine, or as an art print..."

Landscape Photographer / Content Creator
Personal Website: <https://www.davidkoester.de/>
📷 [davidkoesterphoto](#)



Ultra-wide Curved Display for Video Editing

Ahead of The Curve

With an immersive curved screen and stunning resolution, the ViewSonic VP81 monitors elevate your viewing experience from flat to panoramic. Enjoy the immersive enthrallment with cinematic color. Ahead of the curve.



VP81 Series x **Sasan Amir**

"What brings this entire thing together and makes this such an inspiring creative space is this monitor...If you've never edited on an ultra-wide monitor, I genuinely think you are missing out on so much fun. It makes organizing my clips so much nicer."

Wildlife Photographer

Personal Website: <https://www.wildlife.global/>

@sasan_amir & cameragearbros

◆ Immersive Enthrallment

21:9 ultra-wide curved panel design with crystal clear resolution.

◆ Ultimate Precision

Up to 93% DCI-P3 & 100% sRGB with 10-bit Color.

◆ Long-term Color Consistency

Hardware calibration support for aligned communication between the graphics card and the monitor.

◆ Most User-friendly Connectivity

USB-C connectivity with 90W power delivery and video, audio, USB and even Ethernet data transfer.



A Total Solution for Pro-vloggers

Make The World Your Set

Meet the world's first professional monitor with a multifunctional color calibrator, plus Nano IPS Wide Color Gamut 95% DCI-P3 capability, and 165Hz refresh rate. Empower yourself with all the tools you need to harness creativity and hone your craft. With clearer visuals and brighter colors, details fall into focus, so you can make magic anywhere. The world's your set, with ColorPro®.



VP76 Series x Mike Gray

"Back to the importance of having a good monitor. I've been really enjoying the ViewSonic (VP2776) monitor right now. The color accuracy, like I said, is crucial. It saves you time when you're editing and you don't need to be stressed over color. I use a MacBook Pro and this monitor is the perfect partner for a MacBook Pro."

Filmmaker / Content Creator
@mikevisuals

◆ Apple Compatible

Mac ready with 90W USB-C connectivity plus 95% DCI-P3 International Digital Film Standard color gamut.

◆ Great for B-roll

165Hz high refresh rate—ideal for stellar sequences.

◆ Instant Color Adjustment

Control your colors and workflow with the exclusive ColorPro® Wheel, Adobe Software, and on-screen displays.

◆ Long-term Color Consistency

Hardware calibration support for aligned communication between the graphics card and the monitor.

◆ Professional Work Bundle

Our award-winning ID design, ColorPro® Wheel, detachable hood, and built-in backstage light provide pro-vloggers with an immediate and ideal office setup.



Start Your Creative Journey

Begin Your Flawless Creation

Designed to deliver unmatched color accuracy crucial for professional applications, the ViewSonic ColorPro® VP68 series monitors display your work with the vivid and lifelike color it deserves.

With Pantone validated 100% sRGB color coverage, this monitor provides industry standard color to ensure accurate results. Enjoy reliable and flexible network with docking station while the USB-C provides single cable solution for connecting and charging all peripherals and accessories.

To begin your creation with color accuracy. To begin your creative journey with ColorPro®



Shot by: Maxime Rambaud
Edited by: Benoit Gurnel, Vincent Tupin



VP68 Series x *Maxime Rambaud*

I have been using the VP2768a-4K for about a year. I use it for photo editing and video editing, its USB-C connectivity makes it easy to use and allows me to plug it directly into my laptop (MBP 15p). The IPS panel is very well calibrated from the factory and offers a very nice color space. The 4K resolution allows for a good workspace and the ability to display many tools simultaneously.

Photographer / Filmmaker

Personal Website: SCOTT Sports

maxime_rambaud

◆ Ultra Precision with Pantone Certification

100% sRGB, 100% Rec.709, and Delta E < 2 color accuracy with Pantone Validated color.

◆ Most User-friendly Connectivity

USB-C connectivity with 90W power delivery.

◆ World 1st TÜV SÜD Tested Color Blindness Mode

Special Color Blindness and Simulation modes developed and tested by TÜV SÜD.

◆ Unlimited Flexibility

Tilt, swivel, pivot, and make height adjustments with the auto pivot and ergonomic stand.



Showcase Your Perspective

Tap Into Your Limitless Potential

Inspiration starts within, then appears to the world on the ViewSonic VP56 series, delivered with stunning true-to-life, high precision colors on a high-resolution frameless screen, with an ergonomic stand and USB-C support. See your work how it's supposed to be seen.



VP56 Series x A Tai Dai Dai

"ColorPro® monitors have been calibrated with high resolution to portray the accurate colors of the image. It (VP56) shows the original colors of nature which is pivotal and essential for a content creator. We found out that ColorPro®'s monitors can charge my laptop directly. It's very convenient. All you need to do is plug in a single cable. This also helps keep your desk tidy and spacious so my three cats can walk around. The screen is large with adjustable angles and a blue-light filter. Fatigued eyes from prolonged use is no longer an issue."

TaiTai LIVE WILD, Tai & Tai
Writer / Graphic Designer / Content Creator

📷 [taitai.live.wild](#)

📘 [taitai.live.wild](#)

✦ Ultra Precision with Pantone Certification

100% sRGB with pre-factory calibration and international color standard Pantone Validated Color.

✦ Most User-friendly Connectivity

USB-C connectivity with 60W power delivery, DP-ALT mode and USB3.2 data transfer.

✦ Unlimited Flexibility

Tilt, swivel, pivot, and make height adjustments with the auto pivot and ergonomic stand.

✦ Versatile Working Modes

TÜV certified blue light filter for eye protection, CAM/CAD mode for design, and portrait mode for photography.



1st On-the-go Portable Monitor with Versatile Stand


Creation Happens Anywhere

Create where you want, create when you travel, create where you are, and be who you wanna be. No matter if you are on plane or at a café, doing outdoor shooting or indoor grading, VP16-OLED lets you move and evolve.



VP16 Series x *JustKay*

The ColorPro® VP16-OLED portable monitor has played a huge role in color grading as I'm now able to grade accurately while traveling. The screen is lightweight and small enough to fit in my luggage. It's accurate and made for this work, so I can grade precisely on the go.

Travel & Adventure Filmmaker
Personal website: <https://linktr.ee/justkay>
 justkay

◆ OLED Tech

True Black with 1.07 billion colors (10Bit).

◆ Ultra Precision with Pantone Certification

100 % DCI-P3 Pantone Validated color coverage with Delta E < 2 as color quality guarantee.

◆ Unlimited Flexibility

Tripod ready and foldable stand for outdoor shooting and indoor review.

◆ Instant View

Camera ready (Micro HDMI) with USB-C charging to take your creative workstation with you.

◆ Integrated hood

Foldaway hood attaches instantly to eliminate ambient light.





vDisplay Manager

Exclusive Efficiency Software Solutions

vDisplay Manager, a desktop software exclusive to selected ViewSonic VP series models, provides quick and easy color control settings. In addition to integrating the On-Screen Display (OSD) menu controls and advanced settings, the software comes with user-friendly color setting features including: Standard Color, ViewMode, Color Temperature, Auto Pivot, PBP and PIP mode, and monitor firmware updates. These handy features allow users to quickly adopt color settings based on their preferences while also enhancing work productivity.



◆ Screen Split

You can split the screen to see your work from different perspectives.

◆ Smart Color

vDisplay Manager changes the ICC profile to enable smart color features while ICC Sync simplifies the process and immediately synchronizes the color gamut between the monitor and computer, to ensure the most accurate colors.

◆ TÜV Tested Color Blindness Mode

A monitor with a color blindness mode can adjust the display of colors on the screen to enhance accessibility for those with color vision deficiencies.

◆ Auto Pivot

ColorPro® monitors allow you to find the most comfortable monitor positioning for your workflow. Auto Pivot automatically adjusts images to the screen's orientation when pivoted.

◆ PBP and PIP

PBP (Picture-by-Picture) and PIP (Picture-in-Picture) enable you to select different input sources and increase the number of screens on-screen.



Colorbration+

Long-term Color Consistency At All Time

ViewSonic's Colorbration+ offers hardware calibration that aligns communication between the graphics card and the monitor to ensure long-term consistency and accurate colors on select ColorPro® monitors.

- Please install the Colorbration+ software before activating the calibration function.





ColorPro® Sense

Maximize Your Palette Power

Link the exclusive ColorPro® Sense to the Pantone Digital Color online data to always have access to up-to-date Pantone colors, from various libraries.

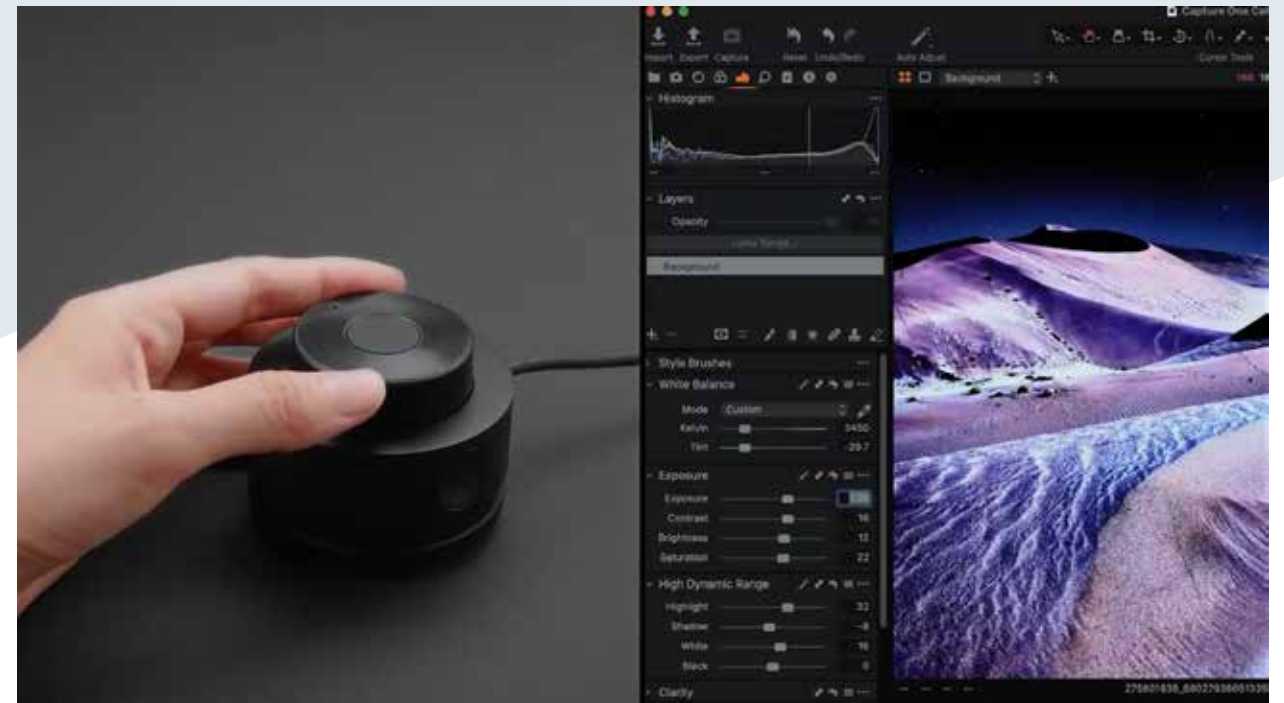
Find the best matched Pantone color code you want as well as multiple alternate palette suggestions. Choose any grouping that matches your vision and easily share it to create a unique color story.



ColorPro® Integrate

Supercharge Your Workflow with Intuitive Software Integration

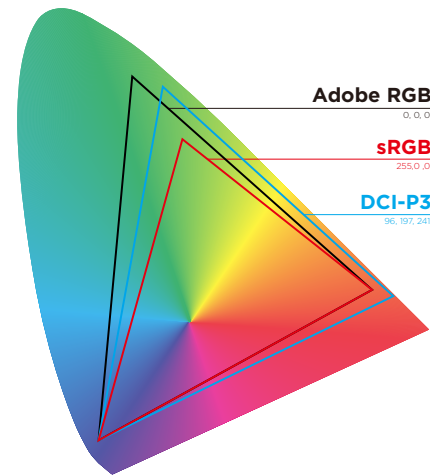
Instantly access Adobe Creative Suite, including Photoshop, Premiere Pro, or Capture One editing software, as well as on-screen displays with the ColorPro® Wheel. Zoom in and out, adjust brush size, brightness settings, opacity and more, all with a simple click and a spin.



For Best Color Performance

Amazing Color Accuracy

Each monitor is factory calibrated to deliver an amazing Delta E<2 value and includes a detailed calibration report for sRGB, EBU, SMPTE-C, and Rec. 709 color spaces. Whether you're a photographer shooting in sRGB and Adobe RGB, or a video editor in need of REC 709/ SMPT-C/EBU standards, you're guaranteed accuracy.



Unrivaled Color Accuracy and Consistency

Hardware calibration combined with proprietary ViewSonic software enables you to focus on your work and have complete confidence that the color displayed on your monitor is vivid and true-to-life.



Stunning Authority-certified Color Performance

ViewSonic's ColorPro® Series brings innovation to the forefront with Pantone Validated, ensuring a high level of fidelity of true-to-life colors.

Selected models are equipped with Fogra and Idealliance Soft Proof System certification to ensure color fidelity for a soft-proofing process that delivering the truest representation of your work.



Designed for a Smoother Workflow

Streamline Editing with Dual-Image Processing

Harness a more productive approach to digital design with picture-by-picture (PBP) in combination with a dual color engine.

With select ColorPro® models supporting PBP with Keyboard, Video, Mouse (KVM) technology, creatives can simultaneously view and edit images while using separate color modes and different sources.



Professional Work Bundle

With the intuitive fingertip control of the ColorPro® Wheel, ergonomic ID design, built-in backstage light, and detachable hood, the premium ColorPro® VP76 and VP86 series deliver professional work bundle packages to set up your creation workspace instantly.



Most User-friendly Connectivity

ColorPro® monitors are loaded with versatile connectivity options that deliver maximum flexibility for any operating system.

The single USB-C cable solution allows for the transfer of data, video, and audio, all from the same port. Selected ColorPro® monitors* with a built-in Ethernet port provide stable network options.

*Support models: VP3456a, VP2468a, VP2768a-4K, VP3268a-4K, VP3881a



ColorPro® Spec Table



Model	VP2786-4K	VP2785-4K	VP2785-2K	VP3481a
Aspect Ratio	27" 16:9	27" 16:9	27" 16:9	34" 21:9
Color Gamut*	100% Adobe RGB 98% DCI-P3 100% sRGB	99% Adobe RGB 100% sRGB 95%DCI-P3	100% Adobe RGB 100% sRGB 96%DCI-P3	100% sRGB 100% REC. 709
Curve	Flat	Flat	Flat	Curved, 1800R
Certification	Fogra, Idealliance, Pantone	N/A	Fogra	Pantone
Calibration	Hardware Calibration	Hardware Calibration	Hardware Calibration	Hardware Calibration
PBP/PIP/KVM	Yes	Yes	Yes	Yes
Static Contrast Ratio (typ)	1,300:1	1,000:1	1,000:1	3,000:1
Viewing Angles	178° horizontal 178° vertical	178° horizontal 178° vertical	178° horizontal 178° vertical	178° horizontal 178° vertical
Response Time	5ms	5ms	5ms	5ms
Resolution	3840 x 2160	3840 x 2160	2560 x 1440	3440 x 1440
Brightness (cd/m ² (typ))	350	350 (VSE/IL: 130)	300	400 (VSE/IL: 310)
Dynamic Contrast Ratio	20,000,000:1	20,000,000:1	20,000,000:1	20,000,000:1
Speaker Out	3Watts x2	N/A	N/A	5Watts x2
I/O Port	HDMI x2 / DP in / USB-C (Power Delivery, DP ALT, Data) / USB 3.2 (4 down / 1 up) / Micro USB	HDMI x2 / DP in / Mini DP in / USB-C (Power Delivery, DP ALT, Data) / USB 3.2 (3 down / 1 up)	HDMI / DP in / DP out / USB-C(Power Delivery ,DP ALT,Data) / USB 3.2 (2 down / 1 up) / USB-C (15W down)	HDMI x2 / DP / USB-C(Power Delivery DP ALT,Data) / USB 3.2 (2 down / 1 up) / Ethernet (RJ45)
Power Charging	90W	60W	60W	90W
Tilt Range/Swivel/Pivot	-3°-21°/120°/180°	-5°-21°/120°/180°	-5°-21°/120°/180°	-6°-21°/120°/ N/A
Height Adjust	0-120mm	0-130mm	0-130mm	0-130mm
Weight (Net)	8.3kg	6.3kg	6.7kg	11.2kg
Weight (Without Stand)	4.9kg	3.8kg	4.1kg	7.3kg
VESA Compatible (mm)	100 x 100	100 x 100	100 x 100	100 x 100
Key Features	100% Adobe RGB Fogra, Idealliance & Pantone Certificated USB-C 90W ColorPro Wheel Detachable Hood Built-in Backstage Light	99% Adobe RGB USB-C 60W Ambient Light Sensor Presence Sensor HDR10	100% Adobe RGB Fogra Certificated USB-C 60W Ambient Light Sensor Presence Sensor Type-C daisy chain	100% sRGB 21:9 aspect ratio 100Hz Curved 1800R Sonic Mode USB-C 60W Ethernet (RJ45) HDR10 FreeSync

*Percentages have been rounded to the nearest integer and calculated by using the specifications as provided by the panel makers.



Model	VP3881a	VP2776	VP2468a	VP2768a
Aspect Ratio	38" 21:9	27" 16:9	24" 16:9	27" 16:9
Color Gamut*	100% sRGB 100% REC. 709 94%DCI-P3	100% sRGB 95% DCI-P3 100% REC. 709	100% sRGB 100% REC. 709	100% sRGB 100% REC. 709
Curve	Curved, 2300R	Flat	Flat	Flat
Certification	Pantone	Pantone	Pantone	Pantone
Calibration	Hardware Calibration	Hardware Calibration	Hardware Calibration	Hardware Calibration
PBP/PIP/KVM	Yes	Yes	No	No
Static Contrast Ratio (typ)	1,000:1	1,000:1	1,000:1	1,000:1
Viewing Angles	178° horizontal 178° vertical	178° horizontal 178° vertical	178° horizontal 178° vertical	178° horizontal 178° vertical
Response Time	5ms	3ms	5ms	5ms
Resolution	3840 x 1600	2560 x 1440	1920 x 1080	2560 x 1440
Brightness (cd/m ² (typ))	300	400	250	350
Dynamic Contrast Ratio	20,000,000:1	20,000,000:1	20,000,000:1	20,000,000:1
Speaker Out	5Watts x2	3Watts x2	N/A	N/A
I/O Port	HDMIx2 / DP / USB-C(Power Delivery DP ALT ,Data) / USB 3.2 (2 down / 1 up) / Ethernet (RJ45)	HDMI x2 / DP in / USB-C (Power Delivery, DP ALT, Data) / USB 3.2 (2 down / 1 up) / USB-C (15W down) / Micro USB	HDMI / DP in / DP out / Ethernet (RJ45) / USB-C(Power Delivery ,DP ALT ,Data) / USB 3.2 (2 down)	HDMI x2 / DP in / DP out / Ethernet (RJ45) / USB-C(Power Delivery , DP ALT, Data) / USB 3.2(2 down / 1 up)
Power Charging	90W	90W	65W	90W
Tilt Range/Swivel/Pivot	-1°-21°/120°/ N/A	-3°-21°/120°/180°	-5°-21°/120°/180°	-5°-21°/120°/180°
Height Adjust	0-130mm	0-120mm	0-130mm	0-130mm
Weight (Net)	12.6kg	8.4kg	5.9kg	7kg
Weight (Without Stand)	7.9kg	5.1kg	3.5kg	4.7kg
VESA Compatible (mm)	100 x 100	100 x 100	100 x 100	100 x 100
Key Features	100% sRGB 21:9 aspect ratio Curved 2300R Sonic Mode USB-C 90W Ethernet (RJ45) HDR10	95% DCI-P3 165Hz refresh rate G-Sync Compatible USB-C 90W ColorPro Wheel Detachable Hood Built-in Backstage Light	100% sRGB Pantone Validated USB-C 65W Ethernet (RJ45) World 1st TÜV SÜD tested color blindness mode	100% sRGB Pantone Validated USB-C 90W Ethernet (RJ45) World 1st TÜV SÜD tested color blindness mode

ColorPro® Spec Table



Model	VP2768a-4K	VP3268a-4K	VP2456	VP2756-2K
Aspect Ratio	27" 16:9	32" 21:9	24" 16:9	27" 16:9
Color Gamut*	100% sRGB 100% REC. 709	100% sRGB 100% REC. 709	100% sRGB 100% REC. 709	100% sRGB 100% REC. 709
Curve	Flat	Flat	Flat	Flat
Certification	Pantone	Pantone	Pantone	Pantone
Calibration	Hardware Calibration	Hardware Calibration	Factory Pre-calibration	Factory Pre-calibration
PBP/PIP/KVM	Yes	Yes	No	No
Static Contrast Ratio (typ)	1,300:1	1,300:1	1,000:1	1,000:1
Viewing Angles	178° horizontal 178° vertical	178° horizontal 178° vertical	178° horizontal 178° vertical	178° horizontal 178° vertical
Response Time	5ms	5ms	5ms	5ms
Resolution	3840 x 2160	3840 x 2160	1920 x 1080	2560 x 1440
Brightness (cd/m² (typ))	350	350	250	350
Dynamic Contrast Ratio	20,000,000:1	20,000,000:1	20,000,000:1	20,000,000:1
Speaker Out	N/A	5Watts x2	2Watts x2	2Watts x2
I/O Port	HDMI x2 / DP / Ethernet (RJ45) / USB-C(Power Delivery, DP ALT,Data) / USB 3.2(2 down/ 1 up)	HDMI x2 / DP / Ethernet (RJ45) / USB-C(Power Delivery DP ALT,Data) / USB 3.2(2 down/ 1 up)	HDMI / DP / USB-C (Power Delivery ,DP ALT ,Data) / USB 3.2(3 down / 1 up)	HDMI / DP / USB-C (Power Delivery ,DP ALT ,Data) / USB 3.2(2 down / 1 up)
Power Charging	90W	90W	60W	60W
Tilt Range/Swivel/Pivot	-5°-21°/120°/180°	-5°-21°/120°/180°	-5°-21°/120°/180°	-5°-21°/120°/180°
Height Adjust	0-130mm	0-130mm	0-130mm	0-130mm
Weight (Net)	6.7kg	10.7kg	6.5kg	6.9kg
Weight (Without Stand)	4.4kg	6.8kg	4kg	4.4kg
VESA Compatible (mm)	100 x 100	100 x 100	100 x 100	100 x 100
Key Features	100% sRGB Pantone Validated USB-C 90W Ethernet (RJ45) World 1st TÜV SÜD tested color blindness mode HDR10	100% sRGB Pantone Validated USB-C 90W Ethernet (RJ45) World 1st TÜV SÜD tested color blindness mode HDR10	100% sRGB Pantone Validated, USB-C 60W Eye care mode with blue light filter tech CAM/CAD mode	100% sRGB Pantone Validated USB-C 60W TÜV certified for blue light filter CAM/CAD mode

*Percentages have been rounded to the nearest integer and calculated by using the specifications as provided by the panel makers.



Model	VP2756-4K	VP3256-4K	VP3456a	VP16-OLED
Aspect Ratio	27" 16:9	32" 16:9	32" 21:9	16" 16:9
Color Gamut*	100% sRGB 100% REC. 709	100% sRGB 100% REC. 709	100% sRGB 100% REC. 709	100% sRGB 100% DCI-P3 100% REC. 709
Curve	Flat	Flat	Curved, 1800R	Flat
Certification	Pantone	Pantone	Pantone	Pantone
Calibration	Factory Pre-calibration	Factory Pre-calibration	Hardware Calibration	Factory Pre-calibration
PBP/PIP/KVM	No	No	Yes	No
Static Contrast Ratio (typ)	1,000:1	1,000:1	3,000:1	100,000:1
Viewing Angles	178° horizontal 178° vertical	178° horizontal 178° vertical	178° horizontal 178° vertical"	170° horizontal 170° vertical
Response Time	5ms	5ms	5ms	1ms
Resolution	3840 x 2160	3840 x 2160	3440 x 1440	1920 x 1080
Brightness (cd/m² (typ))	350	350	400	400
Dynamic Contrast Ratio	20,000,000:1	20,000,000:1	20,000,000:1	1,000,000:1
Speaker Out	2Watts x2	3Watts x2	3Watts x2	1Watts x2
I/O Port	HDMI x2 / DP / USB-C(Power Delivery DP ALT,Data) / USB 3.2(2 down/ 1 up)	HDMI x2 / DP / / USB-C(Power Delivery DP ALT,Data) / USB 3.2(2 down/ 1 up)	HDMI x2 / DP / Ethernet (RJ45) / USB-C(Power Delivery DP ALT,Data) / USB 3.2(2 down/ 1 up)	Micro HDMI / USB-C(Power Delivery DP ALT,Data)
Power Charging	60W	60W	100W	40W
Tilt Range/Swivel/Pivot	-5°-21°/120°/180°	-5°-21°/120°/180°	-6°-21°/120°/N/A	-60°-20°/ N/A / N/A
Height Adjust	0-130mm	0-130mm	0-130mm	N/A
Weight (Net)	7.5kg	10.9kg	11.22kg	0.98kg
Weight (Without Stand)	5.1kg	7.2kg	7.38kg	0.98kg
VESA Compatible (mm)	100 x 100	100 x 100	100 x 100	N/A
Key Features	100% sRGB Pantone Validated USB-C 60W TÜV certified for blue light filter CAM/CAD mode	100% sRGB Pantone Validated USB-C 60W Eye care mode with blue light filter tech CAM/CAD mode	100% sRGB Pantone Validated USB-C 100W Eye care mode with blue light filter tech CAM/CAD mode	OLED True Black 100% DCI-P3 Pantone Validated Versatile Stand Tripod Ready Detachable Hood USB-C 40W



ViewSonic® | ColorPro®

viewsonic.com

Programs, specifications and availability are subject to change without notice.
Copyright © 2020, ViewSonic Corporation. All rights reserved. [20MON_CLP1034]