

## IFP7550 GEN 5 75" 4K VIEWBOARD INTERACTIVE DISPLAY

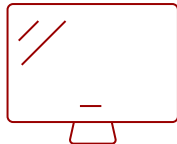
## Key Features

---

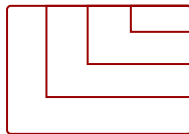
- **ULTRA HD RESOLUTION:** 75 Inch 4K Ultra HD (3840x2160p) interactive display
- **ADVANCED TOUCH:** 40-point multi-touch lets users write on the display with their fingers and stylus pens
- **UPGRADED OPERATING SYSTEM:** Android 11
- **BETTER SOUND:** Built-in 40W stereo soundbar delivers optimal sound
- **INTEGRATED SOFTWARE:** The myViewBoard suite includes Whiteboard, ViewBoard Cast, and more for better engagement
- **FLEXIBLE CONNECTIVITY:** Powerful quad-core processor and versatile connectivity options with 65W PD USB-C (HDMI, RJ45, and USB ports)
- **REMOTE MANAGEMENT:** Schedule updates and monitor device status with the built-in myViewBoard® Manager software
- **PEACE OF MIND:** Industry-leading 3-year standard warranty with optional extensions and robust support services



75  
DISPLAY



PANEL



RESOLUTION



## Product Description

---

Featuring 4K Ultra HD resolution and an advanced, next-generation touchscreen, the ViewSonic® ViewBoard® IFP7550 delivers incredible collaborative capabilities for 21st century boardrooms and classrooms. With integrated myViewBoard® annotation software and ViewBoard Cast™ streaming software, content creation and sharing has never been easier. What's more, this ENERGY STAR certified display delivers optional slot-in PC capability for more computing-intensive interactive applications. A VESA-compatible design allows for installation on a wall mount, or on an optional trolley cart for more flexible installation in classrooms and meeting rooms.

## Specifications

---

More Information

UPC

766907901610

<b>Display Type</b>	LCD
<b>Screen Size</b>	75
<b>Viewable Area (in.)</b>	75
<b>Light Source</b>	LED
<b>Display Resolution</b>	3840 x 2160
<b>Aspect Ratio</b>	16:9
<b>Static Contrast Ratio</b>	1,200:1
<b>Brightness</b>	350 cd/m2
<b>Response Time (Typical GTG)</b>	8ms
<b>Viewing Angles</b>	178º horizontal, 178º vertical
<b>Panel Surface</b>	Anti-glare 7H tempered glass
<b>Ethernet LAN</b>	(10/100/1000M) (Android 10/100, PC 10/100/1000)
<b>OS</b>	Android 11
<b>GPU</b>	ARM Mali-G51
<b>CPU</b>	ARM Quad Core Cortex A73+A53
<b>CPU Processor Speed</b>	1.1GHz
<b>Memory</b>	4GB
<b>Storage</b>	32GB
<b>Internal Speakers</b>	12W (x2)
<b>Subwoofer</b>	16W (x1)
<b>HDMI 2.0 In</b>	3
<b>HDMI Out</b>	1
<b>3.5mm Audio Out</b>	1
<b>SPDIF Audio Out</b>	1
<b>USB 3.0</b>	4
<b>USB 2.0</b>	2
<b>USB Type C</b>	1
<b>Slot-in PC Slot</b>	1
<b>USB B Touch Port</b>	2
<b>RS232</b>	1
<b>Ethernet LAN (RJ45)</b>	2
<b>WIFI Module Slot</b>	1
<b>Intel® OPS Slot In (80-pin)</b>	1
<b>Voltage</b>	100-240 VAC
<b>Consumption (typical)</b>	135W
<b>Stand-by</b>	<0.5W

<b>On Screen Display</b>	Input, Volume, Backlight, Audio, Screen, Display, Adjust
<b>Temperature</b>	32-104° F (0 - 40° C)
<b>Humidity (non-condensing)</b>	10-90%
<b>Touch Technology</b>	Infrared
<b>Touch Points</b>	Windows: 40, Android: 20
<b>Tip Detection</b>	Dual tips, 2.5mm and 8mm
<b>Net (lbs)</b>	118.8
<b>Gross (lbs)</b>	158.5
<b>Net (kg)</b>	53.9
<b>Gross (kg)</b>	71.9
<b>Packaging (in.)</b>	65.7 x 39.8 x 8.8
<b>Physical (in.)</b>	58.6 x 35.3 x 3.5
<b>Packaging (mm)</b>	1669.0 x 1010.0 x 223.0
<b>Physical (mm)</b>	1488.0 x 897.0 x 90.0
<b>VESA Compatible</b>	800 x 400 mm
<b>Warranty</b>	3-year limited warranty on parts, labor and backlight, onsite warranty
<b>Recycle/Disposal</b>	Please dispose of in accordance with local, state or federal laws.
<b>Package Contents</b>	IFP7550-5 panel, 3m power cord, Remote control with AAA battery, 3m touch USB cable, Touch pen x 2 (VB-PEN-009), Quick Start Guide + Compliance statement, RS232 adapter, Clamp x 5, Camera Plate, Screw x 8 (camera 2+2, wall mount 4), HDMI cable 3
<b>Regulations</b>	cTUVus, FCC, ENERGY STAR 7.0, Mexico Energy, CE, CB, RoHS, ErP, WEEE

UPC: 766907901610



## Contact Sales

[ViewSonic.com](https://www.viewsonic.com)

888.881.8781

email:

[salesinfo@viewsonic.com](mailto:salesinfo@viewsonic.com)