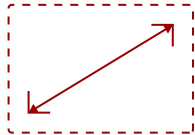




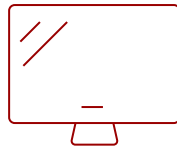
LS610HDH - 4,000 ANSI LUMENS 1080P LED BUSINESS/EDUCATION PROJECTOR

Key Features

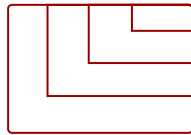
- High brightness 4000 Lumens 1080p LED projector with advanced visual features
- Latest LED technology provides an extended lifespan of up to 30,000 hours
- 1.2x optical zoom, 4 corner adjustment, 40-degree H/V keystone and 360 degree projection
- This projector can be configured to automatically turn on and off
- Schedule, and manage the projector remotely with Crestron, AMX, Extron, PJ Link, ATEN, and ViewSonic's vController
- Supports most media players, PCs, Macs, and mobile devices with HDMI, USB, Ethernet LAN



30 - 300 in. / 0.76 - 7.62 m
DISPLAY



PANEL



VGA(640 x 480) to 4K UHD (3840 x 2160)
RESOLUTION



Product Description

From the classroom to the conference room, the ViewSonic® LS610HDH projector puts your ideas in the best possible light. Powered by the latest in lamp-free LED technology, this high-brightness projector produces 4,000 ANSI lumens for razor sharp images and presentations in environments with strong ambient light. Treat your audience to spellbinding slideshows in vivid colors thanks to a wide color gamut. An eco-friendly, lamp-free design reduces maintenance and dramatically lowers your total cost of ownership, while 1080p Full HD resolution with HDR/HLG support helps you get your points across with complete clarity. Enjoy convenient features like instant power on/off, image correction, flexible setup and so much more. This projector comes equipped with comprehensive LAN control for compatibility with Crestron, AMX, Extron, PJ Link, ATEN and ViewSonic vController systems.

Specifications

More Information

UPC

766907018158

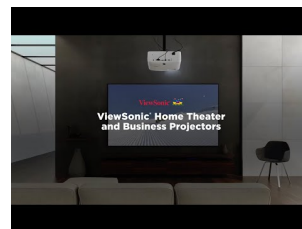
Light Source

DLP LED

Display Resolution	Full HD (1920x1080)
Display Resolution	1920 x 1080
Brightness (Lumens)	4,000 ANSI
Screen Size	30 - 300 in. / 0.76 - 7.62 m
Throw Distance	0.88m-10.59m (100"@2.95m)
Throw Ratio	1.3-1.56
Keystone	Vertical (+/- 40º) / Horizontal (+/- 40º)
Lens	1.2x optical zoom
Light Source Life, Normal (hours)	30000
Color Depth	1.07 Billion Colors
Dynamic Contrast Ratio	3,000,000:1
Aspect Ratio	16:9
Input Lag	37ms
Frequency Horizontal	15K~135KHz
Frequency Vertical	23-120Hz
PC Resolution (max)	VGA(640 x 480) to 4K UHD (3840 x 2160)
Mac® Resolution (max)	480i, 480p, 576i, 576p, 720p, 1080i, 1080p, 4K UHD
USB 2.0 Type A	1
Ethernet LAN (RJ45)	1
3.5mm Audio Out	1
3.5mm Audio In	1
Control (RS232)	1
HDMI 1.4 (with HDCP 1.4)	1
HDMI 2.0 In	1
Internal Speakers	10W (x1)
Voltage	100-240V+/- 10%, 50/60Hz AC
Consumption (typical)	330W
Stand-by	<0.5W
Physical Controls	Keypad, Power key
On Screen Display	Display, Image, Power Management, Basic, Advanced, System, Information (See user guide for full OSD functionality)
Temperature	32-104º F (0 - 40º C)
Kensington Lock Slot	1
Net (lbs)	11
Gross (lbs)	15.4
Net (kg)	5

Gross (kg)	7
Packaging (in.)	19.3 x 14.8 x 10.6
Physical (in.)	15.2 x 10.9 x 4.6
Packaging (mm)	490 x 376 x 268
Physical (mm)	386 x 276 x 116
Regulations	cTUVus
Package Contents	Projector, power cable, remote control, Quick Start Guide
Warranty	Three-year limited warranty on parts and labor, 1-year limited warranty on the light source, 1st year free Express Exchange® service. (One year Express Exchange Service requires product registration).
Recycle/Disposal	Please dispose of in accordance with local, state or federal laws.

UPC: 766907018158



Contact Sales
ViewSonic.com
 888.881.8781
 email:
salesinfo@viewsonic.com