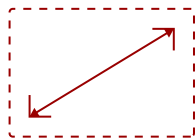


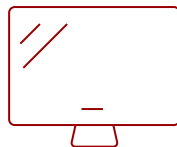
## LS751HD - 5,000 ANSI LUMENS 1080P LASER BUSINESS/EDUCATION PROJECTOR

### Key Features

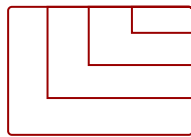
- High brightness 5000 Lumens 1080p laser projector with advanced visual features
- Long-lasting laser phosphor light source allows the lamp to shine bright for up to 30,000 hours
- 1.6x optical zoom, 4 corner adjustment, 40-degree H/V keystone, V lens shift and 360 degree projection
- This projector can be configured to automatically turn on and off
- Schedule, and manage the projector remotely with Crestron, AMX, Extron, PJ Link, ATEN, and ViewSonic's vController
- Supports most media players, PCs, Macs, and mobile devices with inputs such as HDMI, USB, Ethernet LAN



30 - 300 in. / 0.76 - 7.62 m  
**DISPLAY**



**PANEL**



VGA(640 x 480) to 4K UHD (3840 x 2160)  
**RESOLUTION**



x2 HDMI 1.4  
x1 USB 2.0 Type-A  
x1 Ethernet LAN (RJ45)  
x1 3.5mm Audio Out  
x1 RS232 In



1.6x Optical Zoom  
Up To 30,000 Hours Lamp Life

**FLEXIBLE CONNECTIVITY**  
for your favorite devices

### Product Description

Experience better brightness on a smaller budget with the ViewSonic® LS751HD laser projector. This state-of-the-art projector delivers a stunning 5,000 ANSI lumens for crystal clear images even in bright rooms. Experience stunning 300" images with breathtaking colors for boardrooms, lecture halls and other public spaces on a long-lasting, eco-friendly projection solution that's designed for 24/7 usage. Enjoy versatile installation options with vertical lens shift, 1.6x optical zoom, easy image adjustment and 360° projection. HDMI 2.0b connectivity ensures access to 4K content with HDR/HLG support.

### Specifications

More Information

UPC

766907019940

<b>Light Source</b>	Laser Phosphor System
<b>Display Resolution</b>	Full HD (1920x1080)
<b>Display Resolution</b>	1920 x 1080
<b>Brightness (Lumens)</b>	5,000 ANSI
<b>Screen Size</b>	30 - 300 in. / 0.76 - 7.62 m
<b>Throw Distance</b>	0.93-14.88m (100"@3.10m)
<b>Throw Ratio</b>	1.3-1.56
<b>Keystone</b>	Vertical ( $\pm 30^\circ$ ) / Horizontal ( $\pm 30^\circ$ )
<b>Lens</b>	1.6x optical zoom
<b>Light Source Life, Normal (hours)</b>	20000
<b>Light Source Life, Dynamic Eco-Mode (hours)</b>	30000
<b>Color Depth</b>	1.07B Color (R/G/B 10bit)
<b>Dynamic Contrast Ratio</b>	3,000,000:1
<b>Aspect Ratio</b>	16:9
<b>Input Lag</b>	37ms
<b>Frequency Horizontal</b>	15K~102KHz
<b>Frequency Vertical</b>	23-120Hz
<b>PC Resolution (max)</b>	VGA(640 x 480) to 4K UHD (3840 x 2160)
<b>Mac® Resolution (max)</b>	480i, 480p, 576i, 576p, 720p, 1080i, 1080p, 4K UHD
<b>USB 2.0 Type A</b>	1
<b>Ethernet LAN (RJ45)</b>	1
<b>3.5mm Audio Out</b>	1
<b>Control (RS232)</b>	1
<b>HDMI 1.4 (with HDCP 1.4)</b>	2
<b>Internal Speakers</b>	15W (x1)
<b>Voltage</b>	100-240V+/- 10%, 50/60Hz AC
<b>Consumption (typical)</b>	245W
<b>Stand-by</b>	<0.5W
<b>Physical Controls</b>	Keypad, Power key
<b>On Screen Display</b>	Display, Image, Power Management, Basic, Advanced, System, Information (See user guide for full OSD functionality)
<b>Temperature</b>	32-104° F (0 - 40° C)
<b>Kensington Lock Slot</b>	1
<b>Net (lbs)</b>	9.9
<b>Gross (lbs)</b>	14.6
<b>Net (kg)</b>	4.5

<b>Gross (kg)</b>	6.6
<b>Packaging (in.)</b>	19.5 x 7.7 x 15.2
<b>Physical (in.)</b>	13.3 x 10.4 x 5.2
<b>Packaging (mm)</b>	496 x 195 x 387
<b>Physical (mm)</b>	337 x 265 x 131.5
<b>Regulations</b>	cTUVus
<b>Package Contents</b>	Projector, power cable, remote control, Quick Start Guide
<b>Warranty</b>	Three-year limited warranty on parts and labor, 1st year free Express Exchange® service. (One year Express Exchange Service requires product registration).
<b>Recycle/Disposal</b>	Please dispose of in accordance with local, state or federal laws.

UPC: 766907019940



**IMAGE SIZE AND  
PROJECTOR DISTANCE**



**5000 LUMENS**  
and Full HD (1920x1080) Resolution

**Contact Sales**  
[ViewSonic.com](http://ViewSonic.com)

888.881.8781  
email:  
[salesinfo@viewsonic.com](mailto:salesinfo@viewsonic.com)