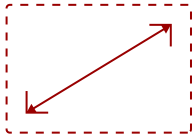




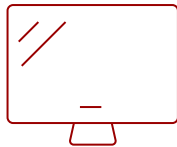
LDS135-151 - 135" DISPLAY, 1920 X 1080 RESOLUTION, 450-NIT BRIGHTNESS, 24/7

## Key Features

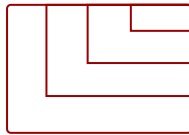
- Pre-assembled kit ready for instant use
- Built-in stand with motorized height adjustment
- Easy to move around with 360° silent wheels
- Simple delivery with movable flight case
- Impressive large display for rental at any event/exhibition



135  
DISPLAY



PANEL



1920x1080  
RESOLUTION



## Product Description

The ViewSonic® LDS135-151 is a 135" All-in-One Direct View LED Display Solution Kit boasting easy delivery, installation, and maintenance. The pre-assembled design and built-in motorized height adjustment stand enable effortless setup within just a few minutes. It can be freely moved around with 360° silent wheels and stabilized with push-button locking. Delivery is easy with the included moveable flight case – a perfect rental-ready solution to impress your viewers from one event or exhibition to another. Engage your audience on a magnificent screen everywhere from high-end board rooms and receptions to galleries, auditoriums, and other large venues.

## Specifications

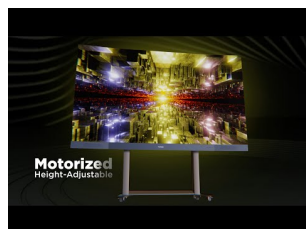
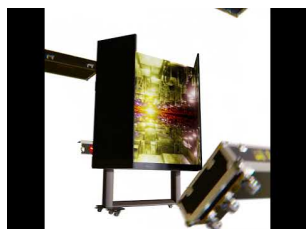
### More Information

UPC	766907014921
Display Type	Direct View LED
Screen Size	135

<b>Viewable Area (in.)</b>	135
<b>Light Source</b>	Fine Pixel Pitch LED
<b>LED Pitch Size (mm)</b>	1.56
<b>LED Grayscale</b>	14 bits
<b>Display Resolution</b>	1920 x 1080
<b>Refresh Rate</b>	4,440Hz
<b>Aspect Ratio</b>	16:9
<b>Static Contrast Ratio</b>	6,000:1
<b>Backlight Life (Hours)</b>	100,000
<b>Brightness</b>	450 cd/m2
<b>Viewing Angles</b>	160° horizontal, 160° vertical
<b>Operation Rating</b>	24/7
<b>OS</b>	Android 9.0
<b>Media Player Type</b>	Yes
<b>GPU</b>	Mult-core MaliG51 MP2
<b>CPU</b>	MTK9669
<b>Memory</b>	4GB DDR4
<b>Storage</b>	64GB (56GB available)
<b>Internal Speakers</b>	20W (x2)
<b>PC Resolution (max)</b>	1920x1080
<b>Mac® Resolution (max)</b>	1920x1080
<b>HDMI 1.4 In</b>	2
<b>HDMI 2.0 In</b>	3
<b>HDMI 2.1 In</b>	1
<b>HDMI 2.0 Out</b>	2
<b>3.5mm Audio Out</b>	1
<b>USB 2.0</b>	3 (Type A Input, and Power 5V/1.5A)
<b>USB Type C</b>	1 (Video input, and Power 5V/2A)
<b>RS232</b>	1
<b>Ethernet LAN (RJ45)</b>	1
<b>IR in</b>	1
<b>WIFI Module Slot</b>	1
<b>Intel® OPS Slot In (80-pin)</b>	1
<b>Voltage</b>	100-120V+/- 10%, 50/60Hz, 20A
<b>Consumption (max)</b>	2000W
<b>Consumption (typical)</b>	900W

<b>Stand-by</b>	<0.5W
<b>On Screen Display</b>	Yes
<b>Remote Control</b>	Yes
<b>Temperature</b>	32-104° F (0 - 40° C)
<b>Humidity (non-condensing)</b>	20-80%
<b>Net (lbs)</b>	564
<b>Gross (lbs)</b>	965
<b>Net (kg)</b>	253
<b>Gross (kg)</b>	438
<b>Packaging (in.)</b>	74.8 x 80.0 x 31.5
<b>Physical (in.)</b>	70.9 x 76.7 x 30.3 (min.), 118.5 x 102.3 x 30.3 (max.)
<b>Packaging (mm)</b>	1900.0 x 2032.0 x 800.0
<b>Physical (mm)</b>	1800.0 x 1948.0 x 770.0 (min.), 3010.0 x 2598.0 x 770.0 (max.)
<b>Warranty</b>	3-year limited warranty on parts and labor, on-site service
<b>Recycle/Disposal</b>	Please dispose of in accordance with local, state or federal laws.
<b>Package Contents</b>	Power Cord, Remote Control, QSG, Maintenance Tool (LD-MK-001) x 1, LAN Cable (Cat 5A) x 1, IR Extender Cable x 1, Spart Modules (LED PCB x 7)
<b>Regulations</b>	cTUVus, FCC, RoHS

UPC: 766907014921



## Contact Sales

[ViewSonic.com](http://ViewSonic.com)

888.881.8781

email:

[salesinfo@viewsonic.com](mailto:salesinfo@viewsonic.com)