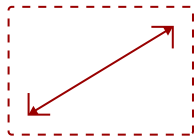


IFP6550-S

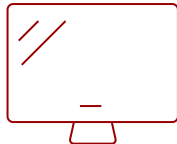
Key Features

REFURBISHED

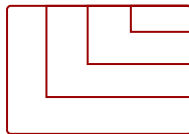
- Ultra HD Resolution
- 20-point Multi-touch Interactive Screen
- Qwizdom Oktopus and Ximbus Solutions
- Out-of-Box Collaboration
- Free Download Available (For More Info, See Below)
- Share With Air Class
- Camera Mounting Bracket Included



65
DISPLAY



PANEL



RESOLUTION



Product Description

Featuring 4K Ultra HD resolution and an immersive 20-point touch screen, the ViewSonic® ViewBoard® IFP6550 delivers incredible collaborative capabilities for 21st century boardrooms and classrooms. With vBoard™ embedded software, this 65" interactive flat panel lets multiple users write or draw on the screen with their fingers and styluses. For more robust annotation options, ViewBoard® Interactive Annotation Software for Windows PC is available via a free download. With a built-in quad-core processor, as well as versatile connectivity options including multiple HDMI, VGA, RS232, RJ45, and USB ports, this display provides powerful computing for annotation and multimedia playback without the need for a PC. This display delivers optional slot-in PC capability for more computing-intensive interactive applications. The IFP6550 features a VESA-compatible design and can be placed on a wall mount, or on an optional trolley cart for flexible installation in classrooms and corporate meeting rooms.

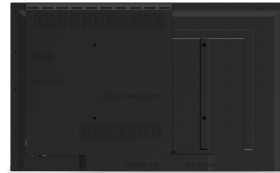
For more detailed information on how ViewSonic ViewBoards can best be utilized in a school environment, see our [ViewBoard FAQs](#).

Specifications

More Information	
UPC	766907941715
Screen Size	65
Viewable Area (in.)	65
Light Source	LED
Display Resolution	3840 x 2160
Aspect Ratio	16:9
Static Contrast Ratio	1,200:1
Backlight Life (Hours)	50,000
Brightness	350 cd/m2
Response Time (Typical GTG)	8ms
Viewing Angles	178° horizontal, 178° vertical
Panel Surface	Anti-glare 7H tempered glass
Operation Rating	16/7
Ethernet LAN	(10/100/1000M) (Android 10/100, PC 10/100/1000)
OS	ViewBoard OS (embedded Android 8)
GPU	ARM Mali450 MP4
CPU	ARM Cortex A53 Quad Core Processor 1.5GHz
Memory	2GB
Storage	16GB
Built-in Software	myViewBoard, Chromium browser, Zoom, ViewBoard Cast
Internal Speakers	16W (x2)
HDMI 1.4 In	2
HDMI 2.0 In	1
HDMI Out	1
VGA	1
DisplayPort	1
Composite RCA	1
3.5mm Audio In	1
3.5mm Audio Out	1
SPDIF Audio Out	1
USB 3.0	2
USB 2.0	4
Slot-in PC Slot	1

USB B Touch Port	2
Ethernet LAN (RJ45)	1
WIFI Module Slot	1
Intel® OPS Slot In (80-pin)	1
Expansion Slot	1
Voltage	100-240 VAC, 50-60Hz
Consumption (max)	350W
Consumption (typical)	104W
Stand-by	<.5W
On Screen Display	Input, Volume, Backlight, Audio, Screen, Display, Adjust
Remote Control	Volume, Channel, Source, Mute, Back, Input, Menu
Temperature	32-104º F (0 - 40º C)
Humidity (non-condensing)	10-90%
Touch Technology	Infrared
Touch Points	Windows: 20, Android: 20
Net (lbs)	103.62
Gross (lbs)	132.28
Net (kg)	47
Gross (kg)	60
Packaging (in.)	66.81 x 42.17 x 8.66
Physical (in.)	59.9 x 36.3 x 3.9
Packaging (mm)	1697 x 1071 x 220
Physical (mm)	1521 x 992 x 99
VESA Compatible	600 x 400 mm
Camera Mounting Bracket	1
Warranty	*Refurbished. 30-day DOA policy for full refund, with a 90-day repair warranty on parts and labor.
Recycle/Disposal	Please dispose of in accordance with local, state or federal laws.
Package Contents	IFP6550 display, stylus pen x 3, power cable, remote control with batteries, ViewSonic Wizard CD (User Guide), Quick Start Guide, USB cable, audio cable, camera bracket, VGA cable, power cords
Regulations	cTUVus, FCC, Mexico Energy, CE, CB, RoHS, ErP, WEEE
Classification	Refurbished

UPC: 766907941715



Contact Sales

ViewSonic.com

888.881.8781

email:

salesinfo@viewsonic.com