

VX2276-SMHD-S

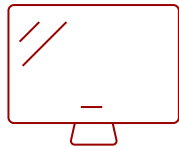
## Key Features

---

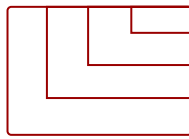
- Ultra-slim panel with frameless design
- SuperClear® IPS panel technology
- Versatile connectivity
- Full HD 1080p resolution
- Superior color rendering and intuitive settings



22  
**DISPLAY**



IPS  
**PANEL**



Up to 1920x1080 non-interlaced  
**RESOLUTION**



## Product Description

---

The ViewSonic® VX2276-smhd is a sleek 22" (21.5" viewable) Full HD monitor with a modern and minimalist style perfect for home use. With SuperClear® IPS Panel technology, this monitor offers best-in-class screen performance with ultra-wide viewing angles. A premium ID includes an ultra-slim profile, unique desktop stand, and a sleek edge-to-edge frameless design, that when combined with vivid 1920x1080 resolution and dual speakers, deliver an immersive viewing experience for home entertainment and multimedia applications. HDMI, DisplayPort, and VGA inputs offer flexible connectivity options for both computing and gaming environments, while ViewSonic's exclusive ViewMode™ feature provides intuitive presets for optimized screen performance in different applications. In addition, Flicker-Free technology and a Blue Light Filter help to minimize eye strain from extended viewing periods. With ViewSonic's industry-leading 3-year limited warranty, this monitor is a solid long-term investment that combines style and high performance for the home.

# Specifications

	More Information
UPC	766907878110
Screen Size	22
Viewable Area (in.)	21.5
Panel Type	IPS
Display Resolution	1920 x 1080
Static Contrast Ratio	1,000:1
Dynamic Contrast Ratio	80M:1
Light Source	LED
Brightness	250 cd/m2
Colors	16.7M
Response Time (Typical GTG)	14ms
Response Time (GTG w/OD)	7ms
Viewing Angles	178º horizontal, 178º vertical
Backlight Life (Hours)	30,000
Panel Surface	Anti-glare, hard-coating (3H)
PC Resolution (max)	Up to 1920x1080 non-interlaced
Mac® Resolution (max)	Up to 1920x1080
3.5mm Audio In	1
3.5mm Audio Out	1
HDMI In	1
VGA	1
DisplayPort	1
Internal Speakers	3-watt (x2)
Eco Mode (Conserve)	15W
Eco Mode (optimized)	18W
Consumption (typical)	21W
Consumption (max)	30W
Voltage	AC 100-240V (universal), 50-60Hz
Cable Organization	No
Kensington Lock Slot	1
Physical Controls	GameMode, 1, 2, 3, 4, Power
On Screen Display	Auto Image Adjust, Contrast/Brightness, Input Select, Audio Adjust, Color Adjust, Information, Manual Image Adjust, Advanced Image Adjust, Setup Menu, Memory Recall (See user guide for complete OSD functionality)

<b>Temperature</b>	32-104º F (0 - 40º C)
<b>Humidity (non-condensing)</b>	20-90%
<b>Frequency Horizontal</b>	24~82kHz
<b>Frequency Vertical</b>	50~75Hz
<b>Analog Sync</b>	Separate Sync,TMDS, PCI-E
<b>Tilt (Forward/Back)</b>	5° / 15°
<b>Net (lbs)</b>	5.4
<b>Gross (lbs)</b>	10.2
<b>Net (kg)</b>	2.4
<b>Gross (kg)</b>	4.6
<b>Packaging (in.)</b>	22.2 x 15.0 x 4.5
<b>Physical (in.)</b>	19.6 x 15.5 x 8.2
<b>Packaging (mm)</b>	563 x 382 x 115
<b>Physical (mm)</b>	497.9 x 392.8 x 209
<b>Regulations</b>	cULus, FCC, ICES-003, Energy Star, EPEAT, NRCan, UL-MXCoC,Mexico Energy, CE, WEEE, Energy Efficiency (EEL), EAC, CEC
<b>Package Contents</b>	VX2276-smhd monitor, Power cable, AC/DC adapter, Audio cable, VGA cable, HDMI cable, Quick Start Guide
<b>Recycle/Disposal</b>	Please dispose of in accordance with local, state or federal laws.
<b>Warranty</b>	*Refurbished. 30-day DOA policy for full refund, with a 90-day repair warranty on parts and labor.
<b>Classification</b>	Discontinued, Refurbished

UPC: 766907878110



## Contact Sales

[ViewSonic.com](http://ViewSonic.com)

888.881.8781

email:

[salesinfo@viewsonic.com](mailto:salesinfo@viewsonic.com)