



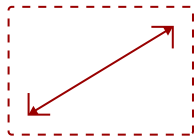
VA2259-SMH - 22" 1080P IPS MONITOR WITH HDMI AND VGA INPUTS

Key Features

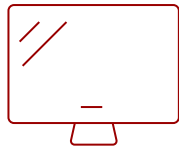
- 22 Inch Full HD (1920x1080p) IPS monitor with 60Hz refresh rate
- Flicker-Free technology and Blue Light Filter for reduced eye fatigue
- Optimized view settings offer "Game," "Movie," "Web," "Text," and "Mono" presets
- The VA2259-SMH supports laptops, PCs, Macs and more with HDMI, and VGA inputs



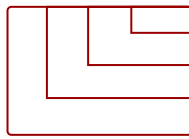
What's in the box.



22
DISPLAY



IPS
PANEL



Up to 1920x1080 non-interlaced
RESOLUTION



VA2259-SMH Monitor

*Power Cable varies by region



Product Description

The ViewSonic® VA2259-smh is a 22" (21.5" viewable) Full HD LED monitor designed for both office and home use. With SuperClear® IPS Panel technology, this monitor offers best-in-class screen performance with ultra-wide viewing angles. Vivid 1920x1080 resolution and dual speakers, combined with a sleek edge-to-edge frameless design, deliver an immersive viewing experience for home entertainment and multimedia applications. What's more, the minimalistic design of this monitor makes it perfect for nearly seamless multi-screen setups. HDMI and VGA inputs deliver flexible connectivity options for both computing and gaming environments, while ViewSonic's exclusive ViewMode feature provides intuitive presets for optimized screen performance in different applications. In addition, Flicker-Free technology and a Blue Light Filter help to minimize eyestrain from extended viewing periods. With ViewSonic's industry-leading 3-year limited warranty, this monitor is a solid long-term investment for enterprise and home applications.

Specifications

| | More Information |
|-----------------------------|--|
| UPC | 766907836530 |
| Screen Size | 22 |
| Viewable Area (in.) | 21.5 |
| Panel Type | IPS |
| Display Resolution | 1920 x 1080 |
| Static Contrast Ratio | 1,000:1 |
| Dynamic Contrast Ratio | 50,000,000:1 |
| Light Source | LED |
| Brightness | 250 cd/m2 |
| Colors | 16.7M |
| Response Time (Typical GTG) | 14ms |
| Response Time (GTG w/OD) | 7ms |
| Viewing Angles | 178º horizontal, 178º vertical |
| Backlight Life (Hours) | 30,000 |
| Panel Surface | Anti-glare, hard-coating (3H) |
| PC Resolution (max) | Up to 1920x1080 non-interlaced |
| Mac® Resolution (max) | Up to 1920x1080 |
| 3.5mm Audio In | 1 |
| 3.5mm Audio Out | 1 |
| HDMI In | 1 |
| VGA | 1 |
| Power in | 3-pin plug (CEE22) |
| Internal Speakers | 2-watt (x2) |
| Eco Mode (Conserve) | 14W |
| Eco Mode (optimized) | 18W |
| Consumption (typical) | 22W |
| Consumption (max) | 27W |
| Voltage | AC 100-240V (universal), 50-60Hz |
| Cable Organization | No |
| Kensington Lock Slot | 1 |
| Physical Controls | 1, 2, Down, Up, Power |
| On Screen Display | Auto Image Adjust, Contrast/Brightness, Input Select, Audio Adjust, Color Adjust, Information, Manual Image Adjust, Advanced Image Adjust, Setup Menu, Memory Recall (See user guide for complete OSD functionality) |

| | |
|-------------------------------------|--|
| Temperature | 32-104° F (0 - 40° C) |
| Humidity (non-condensing) | 20-90% |
| VESA Compatible | 100 x 100 mm |
| Frequency Horizontal | 24~82kHz |
| Frequency Vertical | 50~75Hz |
| Analog Sync | Separate Sync, Composite Sync, Sync on Green, TMDS |
| Net (lbs) | 6.3 |
| Net Without Stand (lbs) | 5.5 |
| Gross (lbs) | 9.5 |
| Net (kg) | 2.8 |
| Net Without Stand (kg) | 2.5 |
| Gross (kg) | 4.3 |
| Packaging (in.) | 22.1 x 17.4 x 6.1 |
| Physical (in.) | 19.7 x 14.8 x 7.9 |
| Physical Without Stand (in.) | 19.7 x 11.9 x 1.8 |
| Packaging (mm) | 562 x 443 x 155 |
| Physical (mm) | 499.7 x 375.1 x 200 |
| Physical Without Stand (mm) | 499.7 x 301.9 x 45.5 |
| Regulations | CE, REACH, WEEE, cULus, FCC-B, ICES003, ENERGY STAR, Mexico CoC, Mexico Energy |
| Package Contents | VA2259-smh monitor, Power cable, HDMI to HDMI (1.5m), Quick Start Guide |
| Recycle/Disposal | Please dispose of in accordance with local, state or federal laws. |

UPC: 766907836530



Contact Sales

[ViewSonic.com](https://www.viewsonic.com)

888.881.8781

email:

salesinfo@viewsonic.com