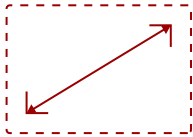


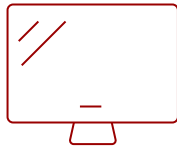
IFP110 - 110" 4K VIEWBOARD INTERACTIVE DISPLAY WITH INTEGRATED MICROPHONE AND USB-C

Key Features

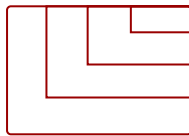
- **Massive Screen:** A 110" 4K touch display is ideal as a large-scale interactive video wall
- **ADVANCED TOUCH:** Up to 40-point multi-touch lets users write on the display with their fingers and included stylus
- **Simpler Setup and Maintenance:** 5'x8' screen is equivalent to four 55" touch displays in a 2x2 video wall layout - but offers a much simpler set up with reduced calibration and maintenance costs.
- **TeamOne Collaboration on a Grand Scale:** ViewSonic TeamOne™ software transforms this massive 110" touchscreen into an infinite digital whiteboard.
- **REMOTE MANAGEMENT:** Schedule updates and monitor device status with the built-in ViewSonic Manager™ software
- **Secure NFC:** Unlock the ViewBoard interactive display with an NFC card for instant access to your personalized settings and accounts.



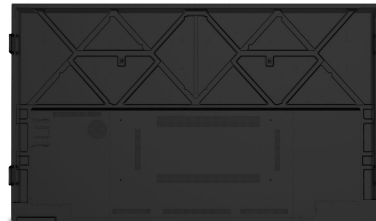
110
DISPLAY



PANEL



RESOLUTION



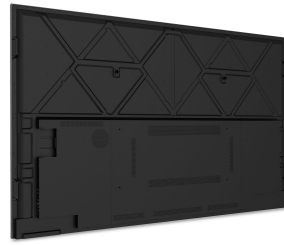
Product Description

The ViewSonic® ViewBoard® IFP110 interactive display boasts a massive 110" touchscreen with 4K Ultra HD resolution, making it one of the largest and most immersive displays on the market. Perfect as an interactive video wall for large-scale presentations in museums, showrooms and training centers, this 5'x8' screen is equivalent to four 55" touch displays in a 2x2 video wall layout - but offers a much simpler set up with reduced calibration and maintenance costs. What's more, with integrated ViewSonic TeamOne™ collaboration software and vCast™ streaming software, content creation and sharing has never been easier. In addition, integrated USB-C provides quick and easy one-wire connectivity, while a VESA-compatible design delivers flexible installation options for wall mounting or mobile cart use.

Specifications

More Information	
UPC	766907025293
OS	ViewBoard OS
Media Player Type	Yes
GPU	Mali-G52
CPU	Octa-Core CPU (A73*4 + A53*4)
Memory	8GB LPDDR
Storage	128GB eMMC
Microphone	Beamforming array x 8, full duplex echo cancellation
Internal Speakers	15W (x2)
Subwoofer	20W (x1)
HDMI 2.0 In	2
HDMI 2.1 In	1
HDMI Out	1
DisplayPort	1
SPDIF	1
USB 3.0	5
USB 2.0	1
USB 2.0 Type B	3
USB Type C	3
RS232	1
Ethernet LAN (RJ45)	2
Intel® OPS Slot In (80-pin)	1
Line In	1
Voltage	100-240 VAC
Consumption (typical)	175.46
Stand-by	<0.5W
Temperature	32-104º F (0 - 40º C)
Humidity (non-condensing)	20-80%
Touch Technology	Infrared
Touch Points	Windows: 40, Android: 20
Tip Detection	Dual tips: 2.5mm and 8mm
Latency	≤8ms
Net (lbs)	285.5

Gross (lbs)	358.25
Net (kg)	129.5
Gross (kg)	162.5
Packaging (in.)	105.71 x 64.17 x 12.20
Physical (in.)	98.70 x 58.06 x 3.81
Packaging (mm)	2685 x 1630 x 310
Physical (mm)	2507.1 x 1474.8 x 96.8
VESA Compatible	1000x800
Screw Size	M8
Warranty	3-year limited warranty on parts, labor and backlight, onsite warranty
Recycle/Disposal	Please dispose of in accordance with local, state or federal laws.
Package Contents	IFP110, 3m Power Cord, 1.8m USB-C Cable, Remote control w/ AAA battery, 3m USB Touch Cable, Stylus x 2, QSG + Compliance statement, RS232 adapter, Clamp x 5, Camera Plate, Screw x 8 (camera 2+2, wall mount 4), 3m HDMI cable, VB-WIFI-005 WiFi Adapter
Regulations	CTUVus, FCC, Energy 8.0, EPEAT, CEC
Ethernet LAN	(10/100/1000M) (USB Type-C 10/100, Android & PC 10/100/1000)
Wifi	VB-WIFI-005 WiFi Adapter
Bluetooth	Bluetooth 5.2
Screen Size	110
Orientation	Landscape
Light Source	DLED
Display Resolution	3840 x 2160
Refresh Rate	60Hz
Aspect Ratio	16:9
Static Contrast Ratio	1,200:1
Dynamic Contrast Ratio	5,000:1
Backlight Life (Hours)	30,000
Brightness	400 cd/m2
Response Time (Typical GTG)	8ms
Viewing Angles	178° horizontal, 178° vertical
Panel Surface	Anti-glare 9H tempered glass
UPC: 766907025293	



Contact Sales

ViewSonic.com

888.881.8781

email:

salesinfo@viewsonic.com