



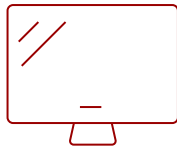
VA2709M - 27" 1080P IPS 100HZ VARIABLE REFRESH RATE MONITOR WITH HDMI, VGA

Key Features

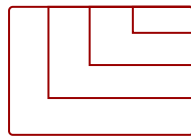
- Multi-angle viewing with SuperClear® IPS Technology
- Frameless edge-to-edge screen
- Smooth images with variable refresh rate
- HDMI and VGA ports for versatile connectivity
- Stunning 1080p resolution
- Optimized viewing presets



27
DISPLAY



IPS
PANEL



1920 X 1080
RESOLUTION



Product Description

Featuring enhanced wide-angle viewing, stunning resolution and flexible connectivity options, the VA2709m helps users bring clarity to their work. This 27" VA2709m monitor comes with SuperClear® IPS panel technology so you can experience stunning brightness and contrast at nearly any viewing angle. Enjoy greater productivity and see the bigger picture by adding additional monitors to your setup as this 27" monitor features a minimalist edge-to-edge screen and a frameless three-sided bezel. Connect laptops, PCs, gaming consoles and other multimedia devices using the versatile HDMI and VGA ports. And with powerful features like flicker-free technology and a blue light filter, you can easily work for longer with less strain. Enjoy a 3 year limited warranty, industry-leading pixel performance policy and so much more with the ViewSonic VA2709m monitor.

Specifications

| | More Information |
|------------------------------------|--|
| UPC | 766907024760 |
| Screen Size | 27 |
| Viewable Area (in.) | 27 |
| Panel Type | IPS |
| Display Resolution | 1920 x 1080 |
| Display Resolution | Full HD (1920x1080) |
| Static Contrast Ratio | 1,300:1 |
| Dynamic Contrast Ratio | 50,000,000:1 |
| Light Source | LED |
| Brightness | 250 cd/m2 |
| Colors | 16.7M |
| Color Space Support | 8 bits |
| Aspect Ratio | 16:9 |
| Response Time (Typical GTG) | 4ms |
| Response Time (MPRT) | 1ms |
| Viewing Angles | 178° horizontal, 178° vertical |
| Backlight Life (Hours) | 30,000 |
| Panel Surface | Anti-Glare type, Hard-coating (3H), Haze 25% |
| PC Resolution (max) | 1920 X 1080 |
| Mac® Resolution (max) | 1920 X 1080 |
| 3.5mm Audio Out | 1 |
| VGA | 1 |
| HDMI 1.4 In | 1 |
| Internal Speakers | 2W (x2) |
| Eco Mode (Conserve) | 22w |
| Eco Mode (optimized) | 26w |
| Consumption (typical) | 30w |
| Consumption (max) | 33w |
| Voltage | AC 100-240V (universal), 50-60Hz |
| Stand-by | 0.3w |
| Power Supply | External |
| Cable Organization | No |
| Kensington Lock Slot | 1 |

| | |
|-------------------------------------|---|
| Physical Controls | Key 1 (favorite), Key 2, Key 3, Key 4, Key 5 (power) |
| On Screen Display | Input Select, Audio Adjust, ViewMode, Color Adjust, Manual Image Adjust, Setup Menu |
| Temperature | 32-104° F (0 - 40° C) |
| Humidity (non-condensing) | 20-90% |
| VESA Compatible | 100 x 100 mm |
| Frequency Horizontal | VGA: 24 ~ 86 KHz / HDMI 1.4: 24 ~ 115 KHz |
| Frequency Vertical | VGA: 48 ~ 75 Hz / HDMI 1.4: 48 ~ 100 Hz |
| Tilt (Forward/Back) | 5° / 20° |
| Net (lbs) | 9.3 |
| Net Without Stand (lbs) | 7.9 |
| Gross (lbs) | 13 |
| Net (kg) | 4.2 |
| Net Without Stand (kg) | 3.6 |
| Gross (kg) | 5.9 |
| Packaging (in.) | 27.4 " (W) x 18.1 " (H) x 5.7 " (D) |
| Physical (in.) | 24.2 " (W) x 18.1 " (H) x 8 " (D) |
| Physical Without Stand (in.) | 24.2 " (W) x 14.3 " (H) x 1.8 " (D) |
| Packaging (mm) | 695 mm (W) x 460 mm (H) x 145 mm (D) |
| Physical (mm) | 615 mm (W) x 460 mm (H) x 203 mm (D) |
| Physical Without Stand (mm) | 615 mm (W) x 364 mm (H) x 46 mm (D) |
| Regulations | cTUVus, FCC-B, ICES003, CEC, NRCAN, NOM, Mexico Energy |
| Package Contents | LCD Display, Power Cable, HDMI Cable, AC/DC Adapter, Quick Start Guide |
| Recycle/Disposal | Please dispose of in accordance with local, state or federal laws. |
| Warranty | Three-year limited warranty on parts, labor and backlight |

UPC: 766907024760



Contact Sales

ViewSonic.com

888.881.8781

email:

salesinfo@viewsonic.com