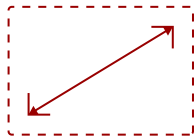


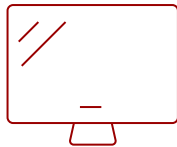
VA2409M - 24" 1080P IPS 75HZ ADAPTIVE SYNC MONITOR WITH HDMI, VGA

Key Features

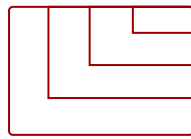
- 24 Inch Full HD (1920x1080p) IPS monitor with thin bezels and 75Hz refresh rate
- Flicker-Free technology and Blue Light Filter for reduced eye fatigue
- VESA Adaptive Sync technology enables smooth frame rates to aid you in battle
- Optimized view settings offer “Game,” “Movie,” “Web,” “Text,” and “Mono” presets
- The VA2409M supports laptops, PCs, Macs and more with HDMI and VGA inputs



24
DISPLAY



IPS
PANEL



1920 x 1080
RESOLUTION



VA2409M Monitor



WHAT'S IN THE BOX
*Power Cable varies by region

Product Description

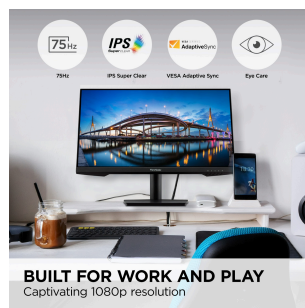
Featuring enhanced wide-angle viewing, stunning resolution and flexible connectivity options, the ViewSonic® VA2409m monitor is a great addition to any workspace. This 24" (23.6" viewable) VA2409m monitor comes with SuperClear® IPS panel technology so you can experience stunning brightness and contrast at nearly any viewing angle. With a minimalist edge-to-edge screen and a 3-sided frameless bezel, you can easily create a seamless multi-monitor setup. Connect laptops, PCs, gaming consoles and other multimedia devices using the HDMI port. And with powerful features like flicker-free technology and a blue light filter, you can work for longer with less strain. Enjoy a 3 year limited warranty, industry-leading pixel performance policy and so much more with the ViewSonic VA2409m monitor.

Specifications

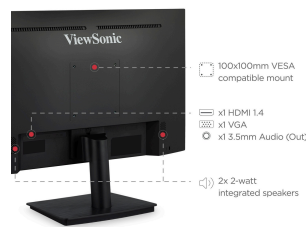
UPC	766907019247
Screen Size	24
Viewable Area (in.)	23.6
Panel Type	IPS
Display Resolution	1920 x 1080
Display Resolution	Full HD (1920x1080)
Static Contrast Ratio	1,000:1
Dynamic Contrast Ratio	50,000,000:1
Light Source	LED
Brightness	250 cd/m2
Colors	16.7M
Color Space Support	8 bit (6 bit + FRC)
Aspect Ratio	16:9
Response Time (Typical GTG)	3ms
Viewing Angles	178° horizontal, 178° vertical
Backlight Life (Hours)	30,000
Panel Surface	Anti-Glare type, Hard-coating (3H), Haze 25%
PC Resolution (max)	1920 x 1080
Mac® Resolution (max)	1920 x 1080
3.5mm Audio Out	1
VGA	1
HDMI 1.4 In	1
Internal Speakers	2W (x2)
Eco Mode (Conserve)	17
Eco Mode (optimized)	19
Consumption (typical)	21
Consumption (max)	24
Voltage	AC 100-240V (universal), 50-60Hz
Stand-by	0.3
Power Supply	External
Cable Organization	No
Kensington Lock Slot	1
Physical Controls	Key 1 (favorite), Key 2, Key 3, Key 4, Key 5 (power)
On Screen Display	Input Select, Audio Adjust, ViewMode, Color Adjust, Manual Image Adjust, Setup Menu
Temperature	32-104° F (0 - 40° C)
Humidity (non-condensing)	20-90%

VESA Compatible	100 x 100 mm
Frequency Horizontal	VGA (24 ~ 86 KHz) HDMI 1.4 (24 ~ 86 KHz)
Frequency Vertical	VGA (48 ~ 75 Hz) HDMI 1.4 (48 ~ 75 Hz)
Tilt (Forward/Back)	3° / 20°
Net (lbs)	6.4
Net Without Stand (lbs)	5.6
Gross (lbs)	9.2
Net (kg)	2.9
Net Without Stand (kg)	2.5
Gross (kg)	4.2
Packaging (in.)	23.7" (W) x 16.1" (H) x 4.7" (D)
Physical (in.)	21" (W) x 16.5" (H) x 7.4" (D)
Physical Without Stand (in.)	21" (W) x 12.6" (H) x 2" (D)
Packaging (mm)	602 mm (W) x 408 mm (H) x 120 mm (D)
Physical (mm)	534 mm (W) x 419 mm (H) x 189 mm (D)
Physical Without Stand (mm)	534 mm (W) x 321 mm (H) x 51 mm (D)
Regulations	cTUVus, FCC-B, ICES003, CEC, NOM, Mexico Energy
Package Contents	LCD Display, Power Cable, HDMI Cable, Quick Start Guide
Recycle/Disposal	Please dispose of in accordance with local, state or federal laws.
Warranty	Three-year limited warranty on parts, labor and backlight

UPC: 766907019247



FULL HD (1920X1080P) RESOLUTION



FUTURE-PROOF CONNECTIVITY OPTIONS

Contact Sales
ViewSonic.com
 888.881.8781
 email:
salesinfo@viewsonic.com