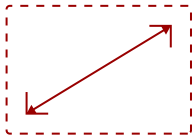




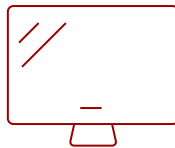
ID2456-C2 - 24" INTERACTIVE PEN DISPLAY AND CHROMEBOX BUNDLE

Key Features

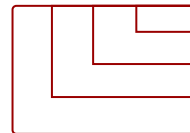
- All-in-One Solution
- Interactive Pen Display
- Chromebox
- Digital Podium Stand VB-STND-006
- Mini PC Mount STND-060-2



24
DISPLAY



PANEL



RESOLUTION

Product Description

Ideal for education environments, this all-in-one digital podium bundle includes a 24" interactive pen display, a NMP760 Chromebox, a STND-060 ergonomic stand, and a STND-060-2 mini PC mount. Simply connect the myPodium™ ID2456 to the Chromebox, then use in conjunction with any existing projector or large format display. The 24" touchscreen allows educators to annotate directly on their lessons, sketch ideas and manipulate content. Meanwhile, students can view the lessons on the projection screen or large format display at the front of the classroom.

Specifications

More Information


Internal Speakers	3W (x2)
HDMI 1.4 In	1
HDMI Out	1
VGA	1

3.5mm Audio In	1
3.5mm Audio Out	1
USB 3.0	2
USB 3.1 Type C	1
USB B Touch Port	1
Intel® OPS Slot In (80-pin)	1
Voltage	100-240 VAC
Consumption (typical)	33W
Stand-by	<0.5W
On Screen Display	Yes
Remote Control	Yes
Temperature	32-104° F (0 - 40° C)
Humidity (non-condensing)	10-85%
Touch Technology	Capacitive
Touch Points	10-Point Touch
Net (lbs)	11
Gross (lbs)	17
Net (kg)	4.99
Gross (kg)	7.71
Packaging (in.)	25.39 x 4.92 x 16.14
Physical (in.)	13.11 x 1.7 x 21.44
Packaging (mm)	644.9 x 124.9 x 409.9
Physical (mm)	332.9 x 43.18 x 544.6
VESA Compatible	100 x 100 mm
Warranty	3-year limited warranty on parts, labor and backlight, onsite warranty
Recycle/Disposal	Please dispose of in accordance with local, state or federal laws.
Package Contents	ID2456 display, Power cable, Type-C cable, HDMI cable, USB cable, MPP2.0 ACP, Pen tether, Pen tip, Quick Start Guide
Regulations	cTUVus, FCC, ENERGY STAR 7.0, Mexico Energy, CE, CB, RoHS, ErP, WEEE
Display Type	LCD
Screen Size	24
Viewable Area (in.)	24
Light Source	LED
Display Resolution	1920 x 1080
Aspect Ratio	16:9
Static Contrast Ratio	1,000:1

Brightness	350 cd/m2
Response Time (Typical GTG)	14ms
Viewing Angles	178° horizontal, 178° vertical
Panel Surface	Anti-Glare type, Hardness 6H

Contact Sales

ViewSonic.com

888.881.8781 

email: salesinfo@viewsonic.com 