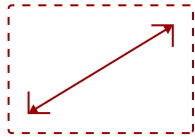


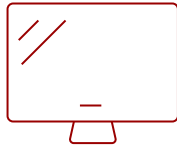
VA2715-2K-MHD - 27" 1440P LED MONITOR WITH HDMI, DISPLAYPORT AND ADAPTIVE SYNC

Key Features

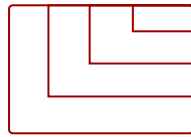
- 27 Inch 2K QHD (2560x1440p) LED monitor with thin bezels and 75Hz refresh rate
- Flicker-Free technology and Blue Light Filter for reduced eye fatigue
- VESA Adaptive Sync technology enables smooth frame rates to aid you in battle
- Optimized view settings offer "Game," "Movie," "Web," "Text," and "Mono" presets
- The VA2715-2K-MHD supports laptops, PCs, Macs and more with HDMI and DisplayPort inputs



27
DISPLAY



MVA
PANEL



2560x1440
RESOLUTION



- 2x 2-watt integrated speakers
- 100x100mm VESA compatible mount
- x2 HDMI 1.4
- x1 DisplayPort In
- x1 Audio (Out)

FUTURE-PROOF INPUTS
For flexible connectivity

Product Description

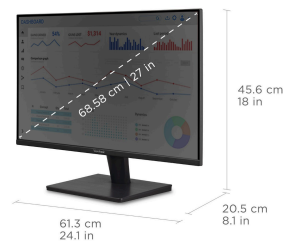
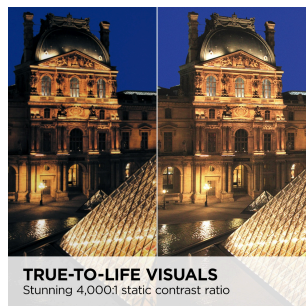
The ViewSonic® VA2715-2K-MHD is a 27" QHD monitor that delivers solid multimedia features at a great value with flexible connectivity, wide-angle viewing, and amazing screen performance. Featuring 2560 x 1440 resolution and a frameless design, this monitor provides a near-seamless viewing experience ideal for multi-monitor setups. Whether for working at the office, or enjoying entertainment at home, the VA2715-2K-MHD also features DisplayPort and HDMI ports for flexible connectivity to PCs, laptops, and other multimedia devices. In addition, a 3-year limited warranty, along with one of the industry's best pixel performance policies, makes the VA2715-2K-MHD a great overall value choice.

Specifications

| | |
|----------------------------------|---|
| UPC | 766907014662 |
| Screen Size | 27 |
| Viewable Area (in.) | 27 |
| Panel Type | MVA |
| Display Resolution | 2560 x 1440 |
| Display Resolution | WQHD (2560x1440) |
| Static Contrast Ratio | 4,000:1 |
| Dynamic Contrast Ratio | 50,000,000:1 |
| Light Source | LED |
| Brightness | 250 cd/m2 |
| Colors | 16.7M |
| Aspect Ratio | 16:9 |
| Response Time (GTG w/OD) | 5ms |
| Viewing Angles | 178° horizontal, 178° vertical |
| Backlight Life (Hours) | 30,000 |
| Panel Surface | Anti-glare, Hard coating (3H) |
| Refresh Rate | 75Hz |
| PC Resolution (max) | 2560x1440 |
| Mac® Resolution (max) | 2560x1440 |
| 3.5mm Audio Out | 1 |
| HDMI 1.4 In | 2 |
| DisplayPort | 1 |
| Internal Speakers | 2W (x2) |
| Eco Mode (Conserve) | 19W |
| Eco Mode (optimized) | 24W |
| Consumption (typical) | 29W |
| Consumption (max) | 31W |
| Voltage | 100-240 VAC, 50-60Hz |
| Stand-by | 0.5W |
| Power Supply | External |
| Cable Organization | No |
| Kensington Lock Slot | 1 |
| Physical Controls | U, R, D, L, EN (power) |
| On Screen Display | Input Select, Audio Adjust, ViewMode, Color Adjust, Manual Image Adjust, Setup Menu |
| Temperature | 32-104° F (0 - 40° C) |
| Humidity (non-condensing) | 20-90% |

| | |
|-------------------------------------|---|
| VESA Compatible | 100 x 100 mm |
| Frequency Horizontal | 15 ~ 120KHz |
| Frequency Vertical | 24 ~ 75Hz |
| Tilt (Forward/Back) | 5° / 20° |
| Net (lbs) | 7.9 |
| Net Without Stand (lbs) | 6.8 |
| Gross (lbs) | 11.0 |
| Net (kg) | 3.6 |
| Net Without Stand (kg) | 3.1 |
| Gross (kg) | 5.0 |
| Packaging (in.) | 27.1 x 17.6 x 5.0 |
| Physical (in.) | 24.1 x 18.0 x 8.1 |
| Physical Without Stand (in.) | 24.1 x 14.2 x 1.6 |
| Packaging (mm) | 688.0 x 448.0 x 128.0 |
| Physical (mm) | 613.0 x 456.0 x 205.0 |
| Physical Without Stand (mm) | 613.0 x 361.0 x 40.0 |
| Regulations | RoHS, WEEE, BSMI, RCM, VCCI, PSE |
| Package Contents | VA2715-2K-MHD x1, HDMI Cable (v1.4; Male-Male) x1, AC/DC Adapter x1, Quick Start Guide x1 |
| Recycle/Disposal | Please dispose of in accordance with local, state or federal laws. |
| Warranty | Three-year limited warranty on parts, labor and backlight |

UPC: 766907014662



WQHD (2560x1440p) RESOLUTION

Contact Sales
ViewSonic.com
888.881.8781
email:
salesinfo@viewsonic.com