

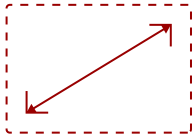
M2E-S

## Key Features

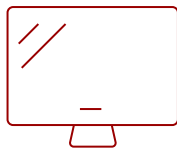
---

REFURBISHED

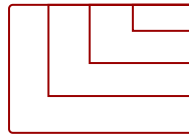
- Easy Setup
- Portable Design
- Cinema SuperColor+
- Dual Bluetooth Harman Kardon Speakers
- Smart Connectivity



100  
DISPLAY



PANEL



1920x1080  
RESOLUTION



## Product Description

---

Enjoy instant entertainment in any room with the ViewSonic® M2e portable smart LED projector. Simply power on the projector and its advanced instant auto focus and auto keystone features deliver a perfectly proportioned picture within seconds. Full HD resolution and 125% Rec.709 color accuracy deliver incredibly vivid and lifelike images, while Harman Kardon speakers provide immersive stereo sound. Smart connectivity options include WiFi for wireless screen mirroring from smart devices, Bluetooth for versatile audio, and USB-C for direct streaming from Switch gaming consoles. Compact and lightweight, the M2e delivers big-screen entertainment in the living room, kids' room or in the backyard, or it can be used as a business projector and carried from office-to-office, or slipped into a briefcase or backpack and taken on the road.

## Specifications

---

<b>UPC</b>	766907014655
<b>Light Source</b>	LED
<b>Display Resolution</b>	Full HD (1920x1080)
<b>Display Resolution</b>	1920 x 1080
<b>Brightness (Lumens)</b>	1,000 LED
<b>Screen Size</b>	100
<b>Throw Distance</b>	0.65m-2.68m (80"@2.14m)
<b>Throw Ratio</b>	1.21
<b>Keystone</b>	Vertical (+/- 40°) / Horizontal (+/- 40°)
<b>Lens</b>	Fixed Zoom
<b>Light Source (watt)</b>	RGBB LED
<b>Light Source Life, Normal (hours)</b>	30000
<b>Color Depth</b>	1.07B Color (R/G/B 10bit)
<b>Dynamic Contrast Ratio</b>	3,000,000:1
<b>Aspect Ratio</b>	16:9
<b>Input Lag</b>	37ms
<b>Frequency Horizontal</b>	15K-102KHz
<b>Frequency Vertical</b>	23-120Hz
<b>PC Resolution (max)</b>	1920x1080
<b>PC Resolution (min)</b>	640 x 480
<b>Mac® Resolution (max)</b>	1920x1080
<b>Mac® Resolution (min)</b>	640 x 480
<b>USB 2.0 Type A</b>	1
<b>USB 3.1 Type C</b>	1
<b>Card Reader</b>	Micro SD
<b>3.5mm Audio Out</b>	1
<b>HDMI 1.4 (with HDCP 1.4)</b>	1
<b>Wifi</b>	5Gn
<b>Bluetooth Audio-in</b>	1 (BT4.2)
<b>Bluetooth Audio-out</b>	1 (BT4.2)
<b>Internal Speakers</b>	3W (x2)
<b>Voltage</b>	Input: 100~240V Output: 19VDC / 4.74A
<b>Consumption (typical)</b>	75W
<b>Stand-by</b>	0.5W
<b>Physical Controls</b>	Power, keystone/arrow keys, left/blank, menu/exit, right/panel key lock, mode/enter, auto, source

<b>On Screen Display</b>	Display, Image, Power Management, Basic, Advanced, System, Information (See user guide for full OSD functionality)
<b>Temperature</b>	32-104° F (0 - 40° C)
<b>Humidity (non-condensing)</b>	0-90%
<b>Kensington Lock Slot</b>	1
<b>Net (lbs)</b>	2.2
<b>Gross (lbs)</b>	6.4
<b>Net (kg)</b>	1.0
<b>Gross (kg)</b>	2.9
<b>Packaging (in.)</b>	10.1 x 10.0 x 6.6
<b>Physical (in.)</b>	7.2 x 7.2 x 2.1
<b>Packaging (mm)</b>	258.0 x 255.0 x 167.0
<b>Physical (mm)</b>	184.0 x 184.0 x 54.0
<b>Regulations</b>	FCC, cTUVus, ROHS
<b>Package Contents</b>	M2e projector, carrying case, power cable, remote control, Quick Start Guide
<b>Warranty</b>	*Refurbished. 30-day DOA policy for full refund, with a 90-day repair warranty on parts and labor.
<b>Recycle/Disposal</b>	Please dispose of in accordance with local, state or federal laws.
<b>Classification</b>	Refurbished
<b>Portability</b>	Portable

UPC: 766907014655



**Contact Sales**  
[ViewSonic.com](http://ViewSonic.com)

888.881.8781  
 email:  
[salesinfo@viewsonic.com](mailto:salesinfo@viewsonic.com)