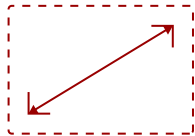


## IFP6552 - 65" 4K TOUCH ENABLED VIEWBOARD SMART DISPLAY

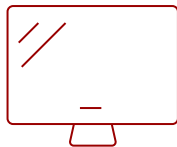
### Key Features

---

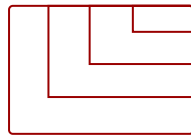
- **ULTRA HD RESOLUTION:** 65 Inch 4K Ultra HD (3840x2160p) interactive display
- **ADVANCED TOUCH:** 33-point multi-touch lets users write on the display with their fingers and stylus pens
- **INTEGRATED SOFTWARE:** The myViewBoard suite includes Whiteboard, ViewBoard Cast, and more for better engagement
- **BETTER SOUND:** Built-in beamforming microphone and 45W stereo soundbar delivers optimal sound
- **FLEXIBLE CONNECTIVITY:** Powerful quad-core processor and versatile connectivity options (HDMI, VGA, RJ45, and USB-C ports)
- **REMOTE MANAGEMENT:** Schedule updates and monitor device status with the built-in myViewBoard® Manager software
- **PEACE OF MIND:** Industry-leading 3-year standard warranty with optional extensions and robust support services
- Upgradable to Android 11



65  
**DISPLAY**



**PANEL**



**RESOLUTION**



### Product Description

---

The ViewSonic® ViewBoard® IFP6552 is a 65" interactive flat panel display with next-generation whiteboard technologies for immersive learning in any classroom environment. With a high-accuracy touchscreen and intelligent palm recognition technology, the IFP6552 delivers an intuitive digital whiteboard experience for everyone from the youngest of students to the most experienced teachers. Featuring 4K Ultra HD resolution, a powerful 45W stereo soundbar and microphone array, this ViewBoard display delivers optimal images and sound for everyone in the classroom as well those learning remotely. With the integrated myViewBoard™ software ecosystem, this ViewBoard display enables teachers to access legacy files from the cloud, as well as build new interactive lessons. IT directors will be confident managing files from a secure cloud network, while curriculum directors will be pleased knowing that this software easily integrates with online resources.

### Specifications

---

<b>UPC</b>	766907009316
<b>OS</b>	ViewBoard OS based on Android 9.0 (Upgradable to Android 11)
<b>GPU</b>	ARM Mali-G52
<b>CPU</b>	ARM Quad Core A73
<b>CPU Processor Speed</b>	1.8GHz
<b>Memory</b>	4GB LPDDR4
<b>Storage</b>	32GB eMMC
<b>Microphone</b>	Beamforming array x 8, noise cancelation
<b>Internal Speakers</b>	15W (x2)
<b>Subwoofer</b>	15W (x1)
<b>HDMI 2.0 In</b>	3
<b>HDMI Out</b>	1
<b>VGA</b>	1
<b>DisplayPort</b>	1
<b>SPDIF</b>	1
<b>USB 3.0</b>	4
<b>USB 2.0 Type B</b>	2
<b>USB 3.1 Type C</b>	1
<b>OPS PC Slot</b>	1
<b>RS232</b>	1
<b>Ethernet LAN (RJ45)</b>	1
<b>Intel® OPS Slot In (80-pin)</b>	1
<b>Line In</b>	1
<b>Voltage</b>	100-240 VAC
<b>Stand-by</b>	<0.5W
<b>Temperature</b>	32-104° F (0 - 40° C)
<b>Humidity (non-condensing)</b>	10-80%
<b>Touch Technology</b>	Infrared
<b>Touch Points</b>	Windows: 33, Android: 20
<b>Tip Detection</b>	Dual tips, 2mm and 8mm
<b>Other</b>	Palm recognition, object awareness
<b>Latency</b>	4ms
<b>Net (lbs)</b>	96.8
<b>Gross (lbs)</b>	122.1
<b>Net (kg)</b>	43.9
<b>Gross (kg)</b>	55.4

<b>Packaging (in.)</b>	65.4 x 41.1 x 9.7
<b>Physical (in.)</b>	59.4 x 37.6 x 4.7
<b>Packaging (mm)</b>	1660.0 x 1045.0 x 245.0
<b>Physical (mm)</b>	1509.1 x 955.4 x 119.1
<b>VESA Compatible</b>	600 x 400 mm
<b>Screw Size</b>	M8
<b>Warranty</b>	3-year limited warranty on parts, labor and backlight, onsite warranty
<b>Recycle/Disposal</b>	Please dispose of in accordance with local, state or federal laws.
<b>Package Contents</b>	IFP6552 display, stylus pen x 2, eraser, power cable, HDMI cable, USB cable, AV cable, remote control with batteries, Camera plate, M8 screw x 8, Quick Start Guide
<b>Regulations</b>	cTUVus, FCC, ENERGY STAR, EPEAT Silver, Mexico Energy, CE, CB, RoHS, ErP, WEEE
<b>Ethernet LAN</b>	(10/100/1000M) (USB Type-C 10/100, Android & PC 10/100/1000)
<b>Wifi</b>	Optional LB-WIFI-001 adapter, 802.11AC + Bluetooth 4.0
<b>Display Type</b>	LCD
<b>Screen Size</b>	65
<b>Viewable Area (in.)</b>	64.5
<b>Light Source</b>	LED
<b>Display Resolution</b>	3840 x 2160
<b>Refresh Rate</b>	60Hz
<b>Static Contrast Ratio</b>	1,200:1
<b>Dynamic Contrast Ratio</b>	4,000:1
<b>Backlight Life (Hours)</b>	50,000
<b>Brightness</b>	350 cd/m2
<b>Response Time (Typical GTG)</b>	8ms
<b>Viewing Angles</b>	178° horizontal, 178° vertical
<b>Panel Surface</b>	9H

UPC: 766907009316



**Contact Sales**  
[ViewSonic.com](http://ViewSonic.com)

888.881.8781  
 email:  
[salesinfo@viewsonic.com](mailto:salesinfo@viewsonic.com)