

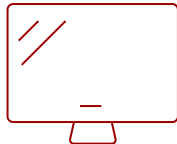
IFP4320 - 43" 4K TOUCH ENABLED VIEWBOARD SMART DISPLAY

Key Features

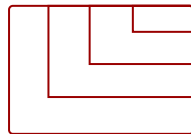
- **ULTRA HD RESOLUTION:** 43 Inch 4K Ultra HD (3840x2160p) interactive display
- **ADVANCED TOUCH:** Multiple users may write or draw on the screen with their fingers
- **INTEGRATED SOFTWARE:** The myViewBoard suite includes Whiteboard, ViewBoard Cast, and more for better engagement
- **FLEXIBLE CONNECTIVITY:** Powerful quad-core processor and versatile connectivity options (HDMI, DisplayPort, DVI-D, RJ45, and USB-C ports)
- **BUILT-IN OS:** Based on Android 8.0 and is compatible with Windows and Android devices only
- **REMOTE MANAGEMENT:** Schedule updates and monitor device status with the built-in myViewBoard® Manager software
- **PEACE OF MIND:** Industry-leading 3-year standard warranty with optional extensions and robust support services



43
DISPLAY



PANEL



RESOLUTION



Product Description

Featuring 4K Ultra HD resolution and an advanced, next-generation touchscreen, the ViewSonic® ViewBoard® IFP4320 is perfect for small collaboration spaces in hybrid work environments. With a 43" high-accuracy in-cell touchscreen, this ViewBoard display delivers a smooth handwriting and annotation experience ideal for home offices, workplace cubicles, huddle spaces and more. Integrated myViewBoard® annotation software and ViewBoard Cast streaming software, allow users to remotely collaborate with team members in any location. What's more, USB-C connectivity allows for quick and easy connection to laptops and PCs so that the IFP4320 can function as a primary touchscreen device.

Specifications

[More Information](#)

UPC

766907010206

OS	ViewBoard OS based on Android 8.0
GPU	MaliG51 MP2
CPU	ARM Quad Core A73+A53
Memory	3GB LPDDR4
Storage	16GB eMMC
Internal Speakers	10W (x2)
HDMI 2.0 In	1
DVI-D	1
DisplayPort	1
Composite RCA	1
USB 2.0 Type B	1
USB 3.1 Type C	1
Ethernet LAN (RJ45)	1
Intel® OPS Slot In (80-pin)	1
Voltage	100-240 VAC
Consumption (max)	150W
Consumption (typical)	120W
Stand-by	<0.5W
Temperature	32-104° F (0 - 40° C)
Humidity (non-condensing)	20-80%
Touch Technology	In-cell
Touch Points	Android: 10
Tip Detection	2.5mm
Other	Palm rejection, objection awareness
Net (lbs)	39.3
Gross (lbs)	49.49
Net (kg)	17.83
Gross (kg)	22.45
Packaging (in.)	47.2 x 30.9 x 8.3
Physical (in.)	38.1 x 21.9 x 2.2
Packaging (mm)	1200.0 x 785.0 x 210.0
Physical (mm)	967.0 x 558.1 x 55.7
VESA Compatible	400 x 400 mm
Screw Size	M6
Warranty	3-year limited warranty on parts, labor and backlight, onsite warranty
Recycle/Disposal	Please dispose of in accordance with local, state or federal laws.

Package Contents	IFP4320 display, power cable, HDMI cable, USB-C, USB-A/B (for touch), AV cable, remote control with batteries, Camera plate, M8 screw x 8, legs, Quick Start Guide
Regulations	cTUVus, FCC, ENERGY STAR, EPEAT Certified, Mexico Energy, CE, CB, RoHS, ErP, WEEE
Ethernet LAN	N/A
Wifi	Optional VSB050 wireless adapter
Display Type	LCD
Screen Size	43
Viewable Area (in.)	42.51
Light Source	LED
Display Resolution	3840 x 2160
Refresh Rate	60Hz
Aspect Ratio	16:9
Static Contrast Ratio	1,000:1
Backlight Life (Hours)	30,000
Brightness	350 cd/m2
Response Time (Typical GTG)	9ms
Viewing Angles	178° horizontal, 178° vertical
Panel Surface	Anti-glare

UPC: 766907010206



Contact Sales
ViewSonic.com
 888.881.8781
 email:
salesinfo@viewsonic.com