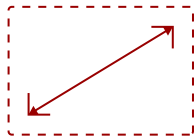
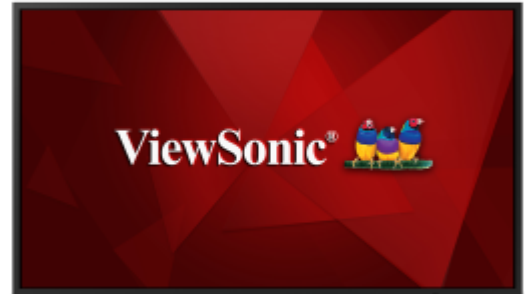


CDE5520 - 55" DISPLAY, 3840 X 2160 RESOLUTION, 350 CD/M2 BRIGHTNESS

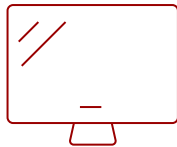
## Key Features

---

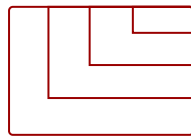
- Ultra HD Resolution
- Powerful All-in-One SoC Platform
- Free ViewBoard® Cast Content Sharing Software
- Integrated Content Management System
- AV Control System Certified
- Embedded LAN and Optional Wireless Connectivity



55  
**DISPLAY**



IPS-Type  
**PANEL**



3840 x 2160  
**RESOLUTION**



## Product Description

---

The ViewSonic® CDE5520 is a 55" premium 4K large format presentation display. With features including a razor-sharp resolution of 3840 x 2160, 450-nit high brightness, 178-degree ultra-wide viewing angles, 2 x 10W speakers, and wireless screen sharing, the display transforms meeting rooms into dynamic communications hubs. The built-in ViewBoard® screen sharing software\*, ViewBoard® Cast (along with the optional ViewSonic® vCastSender app), enables both on-site and online users to participate in conferences and simultaneously share content. Equipped with twin dual-core processors, 3GB RAM, and 16GB of internal memory, the CDE5520 can play multimedia from internal storage or a USB flash drive. And with remote configuration and content management system support, the ViewSonic® CDE5520 is also suitable for a wide array of diverse signage applications. \*Chrome, Android, Windows, Mac OS, and iOS compliant

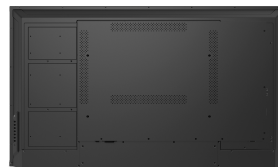
# Specifications

---

	More Information
<b>UPC</b>	766907007244
<b>Media Player Type</b>	Yes
<b>GPU</b>	Dual-core MaliG51 MP2
<b>CPU</b>	2 x Dual-core Processors - Cortex A73 + A53
<b>CPU Processor Speed</b>	1.4GHz
<b>Memory</b>	3GB DDR4
<b>Storage</b>	16GB eMMC
<b>Internal Speakers</b>	10W (x2)
<b>PC Resolution (max)</b>	3840 x 2160
<b>Mac® Resolution (max)</b>	3840 x 2160
<b>HDMI 2.0 In (With CEC, HDCP 2.2)</b>	2
<b>DVI-D</b>	1
<b>RCA Audio Out</b>	1
<b>SPDIF Audio Out</b>	1
<b>USB 2.0</b>	2
<b>RS232</b>	1
<b>Ethernet LAN (RJ45)</b>	1
<b>IR in</b>	1
<b>IR out</b>	1
<b>Intel® OPS Slot In (80-pin)</b>	1
<b>Voltage</b>	100-240 VAC +/- 10% Wide Range, 50-60Hz +/-3 Hz
<b>Consumption (max)</b>	115W
<b>Consumption (typical)</b>	100W
<b>Stand-by</b>	<0.5W
<b>On Screen Display</b>	Yes
<b>Remote Control</b>	Yes
<b>Temperature</b>	32-104° F (0 - 40° C)
<b>Humidity (non-condensing)</b>	10-80%
<b>Net (lbs)</b>	37.1
<b>Gross (lbs)</b>	52.8
<b>Net (kg)</b>	16.8
<b>Gross (kg)</b>	23.9
<b>Packaging (in.)</b>	55.9 x 35.8 x 9.7

<b>Physical (in.)</b>	48.9 x 28.1 x 2.9
<b>Packaging (mm)</b>	1420.0 x 910.0 x 245.0
<b>Physical (mm)</b>	1243.2 x 714.0 x 74.8
<b>VESA Compatible</b>	400 x 400 mm
<b>Screw Size</b>	M6
<b>AV Control</b>	AMX Certified, Crestron Certified (Version 1.0), Extron Certified
<b>Warranty</b>	3-year limited warranty on parts, labor and backlight, onsite warranty
<b>Recycle/Disposal</b>	Please dispose of in accordance with local, state or federal laws.
<b>Package Contents</b>	CDE5520, Remote control with batteries, Quick Start Guide, Power cable (1.8m), HDMI Cable (1.8m) and RS232 cable (1.8m)
<b>Regulations</b>	cULus, FCC, Energy Star, RoHS, TUV Mexico, Mexico Energy
<b>Screen Size</b>	55
<b>Viewable Area (in.)</b>	54.6
<b>Light Source</b>	DLED
<b>Display Resolution</b>	3840 x 2160
<b>Panel Type</b>	IPS-Type
<b>Static Contrast Ratio</b>	1,200:1
<b>Backlight Life (Hours)</b>	40,000
<b>Brightness</b>	350 cd/m2
<b>Response Time (Typical GTG)</b>	9ms
<b>Bezel Width (in.)</b>	0.55 (uniform)
<b>Bezel Width (mm)</b>	13.9 (uniform)
<b>Viewing Angles</b>	178° horizontal, 178° vertical
<b>Panel Surface</b>	Hard Coat - Anti-Glare, 3% Haze, 2H with anti-glare treatment

UPC: 766907007244



**Contact Sales**  
[ViewSonic.com](http://ViewSonic.com)

888.881.8781  
 email:  
[salesinfo@viewsonic.com](mailto:salesinfo@viewsonic.com)