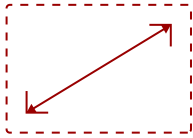


PS600X-S

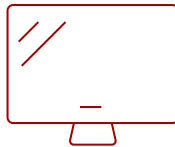
## Key Features

### REFURBISHED

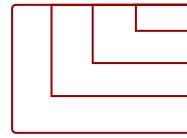
- SuperColor: Amazing Color Accuracy
- Large Images In Small Spaces
- 3,500 Lumen Brightness
- Horizontal and Vertical Keystone
- Long Lamp Life
- Compatible with Interactive Whiteboard Module



30 - 300 in. / 0.76 - 7.62 m  
**DISPLAY**



**PANEL**



1920 x 1080  
**RESOLUTION**



## Product Description

The ViewSonic® PS600X networkable projector features 3,500 lumens, native XGA 1024x768 resolution, and an intuitive, user-friendly design. Exclusive SuperColor™ technology offers a wide color gamut for beautiful image production in nearly any environment, and a 10W speaker delivers incredibly clear and audible sound. A short throw lens with a 0.61 throw ratio offers large projection images for smaller rooms. With HV keystone, corner adjustment, and easy network management, the PS600X provides flexible setup. Designed with smarter features and extensive connectivity, the networkable short throw PS600X is ideal for use in education and corporate environments.

## Specifications

	More Information
<b>UPC</b>	766907983715
<b>Light Source</b>	DLP Lamp
<b>Display Resolution</b>	XGA (1024x768)
<b>Display Resolution</b>	1024 x 768
<b>Brightness (Lumens)</b>	3,500 ANSI
<b>Screen Size</b>	30 - 300 in. / 0.76 - 7.62 m
<b>Throw Distance</b>	2.4 - 7.3 ft / 0.7 - 2.2 m
<b>Throw Ratio</b>	0.6

<b>Keystone</b>	Vertical (+/- 40°) / Horizontal (+/- 26°)
<b>Lens</b>	Fixed Zoom
<b>Light Source (watt)</b>	190
<b>Light Source Life, Normal (hours)</b>	5000
<b>Light Source Life, Dynamic Eco-Mode (hours)</b>	15000
<b>Color Depth</b>	1.07B Color (R/G/B 10bit)
<b>Dynamic Contrast Ratio</b>	22,000:1
<b>Aspect Ratio</b>	4:3
<b>Input Lag</b>	37ms
<b>Frequency Horizontal</b>	15K ~ 102KHz
<b>Frequency Vertical</b>	23 ~ 120Hz
<b>PC Resolution (max)</b>	1920 x 1080
<b>PC Resolution (min)</b>	640 x 480
<b>Mac® Resolution (max)</b>	1920 x 1080
<b>Mac® Resolution (min)</b>	640 x 480
<b>USB 2.0 Type A</b>	1
<b>Ethernet LAN (RJ45)</b>	1
<b>3.5mm Audio Out</b>	1
<b>3.5mm Audio In</b>	1
<b>Control (RS232)</b>	1
<b>HDMI 1.4 In</b>	2
<b>VGA In</b>	2
<b>VGA Out</b>	1
<b>Composite RCA Video In</b>	1
<b>Mini USB</b>	1
<b>Internal Speakers</b>	10W (x1)
<b>Voltage</b>	100-240V +/- 10%, 50/60Hz AC
<b>Consumption (typical)</b>	260W
<b>Stand-by</b>	<0.5W
<b>Physical Controls</b>	Power, keystone/arrow keys, left/blank, menu/exit, right/panel key lock, mode/enter, auto, source
<b>On Screen Display</b>	Display, Image, Power Management, Basic, Advanced, System, Information (See user guide for full OSD functionality)
<b>Temperature</b>	32-104° F (0 - 40° C)
<b>Humidity (non-condensing)</b>	0-90%
<b>Kensington Lock Slot</b>	1
<b>Net (lbs)</b>	5.7

<b>Gross (lbs)</b>	7.2
<b>Net (kg)</b>	2.6
<b>Gross (kg)</b>	3.3
<b>Packaging (in.)</b>	14.4 x 7.4 x 11.8
<b>Physical (in.)</b>	11.5 x 4.5 x 9.3
<b>Packaging (mm)</b>	365.0 188.0 x 300.0
<b>Physical (mm)</b>	292.0 x 115.0 x 236.0
<b>AV Control</b>	AMX Certified, ATEN Certified, Crestron Certified, PJ Link Certified
<b>Regulations</b>	FCC, cTUVus, ROHS
<b>Package Contents</b>	PS600X projector, power cable, VGA cable, remote control, Quick Start Guide
<b>Warranty</b>	*Refurbished. 30-day DOA policy for full refund, with a 90-day repair warranty on parts and labor.
<b>Recycle/Disposal</b>	Please dispose of in accordance with local, state or federal laws.
<b>Classification</b>	Refurbished

UPC: 766907983715



### Contact Sales

[ViewSonic.com](http://ViewSonic.com)

888.881.8781

email: [salesinfo@viewsonic.com](mailto:salesinfo@viewsonic.com)