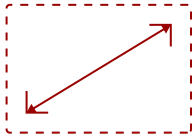


VG2248-S

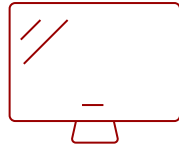
Key Features

REFURBISHED

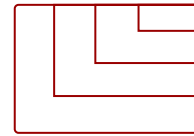
- SuperClear IPS
- A More Comfortable Workspace
- Environmentally Friendly Packaging
- Convenient & Versatile Stand
- Loaded with Connectivity



22
DISPLAY



IPS
PANEL



1920 x 1080
RESOLUTION



Product Description

Designed for the modern day office, the ViewSonic® VG2248 monitor delivers an efficient end-to-end enterprise experience. Featuring SuperClear® IPS panel technology and 1080p resolution, this 22" (21.5" viewable) monitor delivers crisp and clear images from nearly any viewing angle. For enhanced productivity, an advanced ergonomic design offers a wide range of customizable adjustments for maximum comfort including pivot, swivel, height adjustment, and tilt. With the ability to tilt an impressive 40-degrees, the VG2248 is ideal for users who prefer to work while standing up, as well as for those who like to use their screen for group discussions. Versatile connectivity options include HDMI, DisplayPort, VGA, and USB 3.0. This monitor is also shipped in eco-friendly biodegradable packaging, along with an easy-to-install quick release stand that makes for simple out-of-the box setup. The quick release stand also includes an integrated client mount and cable management features, making this monitor perfect for deployment in cloud-based environments.

Specifications

More Information

UPC	766907988918
Screen Size	22
Viewable Area (in.)	21.5
Panel Type	IPS
Display Resolution	1920 x 1080
Static Contrast Ratio	1,000:1
Dynamic Contrast Ratio	50,000,000:1
Light Source	WLED

Brightness	250 cd/m2
Colors	16.7M
Color Space Support	6 bits
Aspect Ratio	16:9
Response Time (Typical GTG)	14ms
Response Time (GTG w/OD)	7ms
Viewing Angles	178° horizontal, 178° vertical
Backlight Life (Hours)	30,000
Panel Surface	Anti-glare, Hard coating (3H)
PC Resolution (max)	1920 x 1080
Mac® Resolution (max)	1920 x 1080
USB 3.0 Type A	4
USB 3.0 Type B	1
VGA	1
HDMI 1.4 In	1
DisplayPort	1
Internal Speakers	2W (x2)
Eco Mode (Conserve)	14.1W
Eco Mode (optimized)	16.3W
Consumption (typical)	19.6W
Consumption (max)	55.4W
Voltage	AC 100-240V (universal), 50-60Hz
Stand-by	0.5W
Power Supply	Internal
Cable Organization	No
Kensington Lock Slot	1
Physical Controls	1,2,3,4,5,Power
On Screen Display	Auto Image Adjust, Contrast/Brightness, Input Select, Audio Adjust, Color Adjust, Information, Manual Image Adjust, Advanced Image Adjust, Setup Menu, Memory Recall (See user guide for complete OSD functionality)
Temperature	32-104° F (0 - 40° C)
Humidity (non-condensing)	20-90%
VESA Compatible	100 x 100 mm
Frequency Horizontal	24 ~ 82KHz
Frequency Vertical	50 ~ 75Hz
Digital Sync	TMDS for HDMI, PCI-E for DisplayPort
Height Adjust	130 mm / 5.1 in

Swivel	120°
Pivot (Right/Left)	90° / 90°
Tilt (Forward/Back)	40° / 5°
Net (lbs)	11.9
Net Without Stand (lbs)	6.5
Gross (lbs)	17.4
Net (kg)	5.4
Net Without Stand (kg)	2.9
Gross (kg)	7.9
Packaging (in.)	22.4 x 8.3 x 15.0
Physical (in.)	19.6 x 14.7 x 8.0
Physical Without Stand (in.)	19.6 x 11.7 x 2.0
Packaging (mm)	570.0 x 210.0 x 380.0
Physical (mm)	498.5 x 372.7 x 202.2
Physical Without Stand (mm)	498.5 x 296.9 x 50.0
Regulations	cTUVus, FCC-B, ICES003, Energy Star 7.0, EPEAT, TUV Mexico CoC, Mexico Energy
Package Contents	VG2248 Display, Power Cable, DP to DP Cable, USB 3.0 Upstream Cable, Quick Start Guide
Recycle/Disposal	Please dispose of in accordance with local, state or federal laws.
Warranty	*Refurbished. 30-day DOA policy for full refund, with a 90-day repair warranty on parts and labor.
Classification	Refurbished

UPC: 766907988918



Contact Sales

ViewSonic.com

888.881.8781

email: salesinfo@viewsonic.com