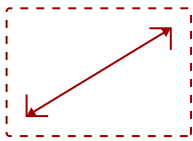


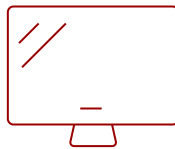
IFP7550-E2 - 75" 4K TOUCH ENABLED VIEWBOARD SMART DISPLAY WITH WIFI ADAPTER AND MOBILE TROLLEY CART

Key Features

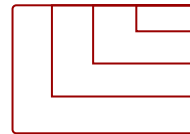
- **ULTRA HD RESOLUTION:** 75 Inch 4K Ultra HD (3840x2160p) interactive display
- **ADVANCED TOUCH:** 40-point multi-touch lets users write on the display with their fingers and stylus pens
- **INTEGRATED SOFTWARE:** The myViewBoard suite includes Whiteboard, ViewBoard Cast, and more for better engagement
- **BETTER SOUND:** Built-in 40W stereo soundbar delivers optimal sound
- **FLEXIBLE CONNECTIVITY:** Powerful quad-core processor and versatile connectivity options with 65W PD USB-C (HDMI, RJ45, and USB ports)
- **EVERYTHING TO GET STARTED:** This bundle includes the interactive display, wireless AC adapter and rolling mobile cart
- **REMOTE MANAGEMENT:** Schedule updates and monitor device status with the built-in myViewBoard® Manager software
- **PEACE OF MIND:** Industry-leading 3-year standard warranty with optional extensions and robust support services



75
DISPLAY



PANEL



RESOLUTION

Product Description

Ideal for education environments, this all-in-one ViewBoard Bundle includes a 75" ViewBoard IFP7550 4K interactive flat panel, a wireless AC adapter, and a VB-STND-001 mobile trolley cart.

Specifications

More Information

UPC	766907002577
OS	ViewBoard OS (embedded Android 8)
GPU	ARM Mali450 MP4
CPU	ARM Quad Core A73 + A53

CPU Processor Speed	A73: 1.1GHz, A53: 1.5GHz
Memory	2GB
Storage	16GB
Built-in Software	myViewBoard, Chromium browser, Zoom, ViewBoard Cast
Internal Speakers	10W (x2)
Subwoofer	15W (x1)
HDMI 2.0 In	3
VGA	1
DisplayPort	1
Composite RCA	1
3.5mm Audio In	1
3.5mm Audio Out	1
SPDIF Audio Out	1
USB 3.0	4
USB 2.0	3
Slot-in PC Slot	1
USB B Touch Port	2
RS232	1
Ethernet LAN (RJ45)	1
WIFI Module Slot	1
Intel® OPS Slot In (80-pin)	1
Voltage	100-240 VAC
Consumption (max)	350W
Consumption (typical)	138W
Stand-by	<0.5W
On Screen Display	Input, Volume, Backlight, Audio, Screen, Display, Adjust
Remote Control	Volume, Channel, Source, Mute, Back, Input, Menu
Temperature	32-104° F (0 - 40° C)
Humidity (non-condensing)	10-90%
Touch Technology	Infrared
Touch Points	Windows: 20, Android: 20
Tip Detection	Dual tips, 3mm and 8mm
Net (lbs)	206.17
Gross (lbs)	252.58
Net (kg)	93.52
Gross (kg)	114.57

Packaging (in.)	75.3 x 48.2 x 14.9
Physical (in.)	69.4 x 41.0 x 29.5
Packaging (mm)	1919.0 x 1225.0 x 380.0
Physical (mm)	1763.0 x 1042.0 x 749.0
VESA Compatible	800 x 400 mm
Warranty	3-year limited warranty on parts, labor and backlight, onsite warranty
Recycle/Disposal	Please dispose of in accordance with local, state or federal laws.
Package Contents	IFP7550 Display, wireless AC adapter, VB-STND-001, stylus pen x 2, power cable, remote control with batteries, ViewSonic Wizard CD (User Guide), Quick Start Guide, USB cable, camera bracket, HDMI cable, power cords
Regulations	cTUVus, FCC, ENERGY STAR 7.0, Mexico Energy, CE, CB, RoHS, ErP, WEEE
Ethernet LAN	(10/100/1000M) (Android 10/100, PC 10/100/1000)
Screen Size	75
Viewable Area (in.)	75
Light Source	LED
Display Resolution	3840 x 2160
Refresh Rate	60Hz
Aspect Ratio	16:9
Static Contrast Ratio	1,200:1
Dynamic Contrast Ratio	5,000:1
Backlight Life (Hours)	50,000
Brightness	350 cd/m2
Response Time (Typical GTG)	8ms
Viewing Angles	178° horizontal, 178° vertical
Panel Surface	9H
Operation Rating	16/7

UPC: 766907002577

Contact Sales

ViewSonic.com

888.881.8781

email: salesinfo@viewsonic.com