

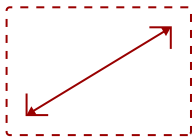
VA2256-MHD - 22" 1080P IPS MONITOR WITH FREESYNC, HDMI, DISPLAYPORT, AND VGA

Key Features

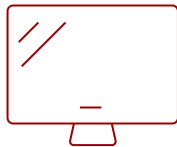
- 22 Inch Full HD (1920x1080p) IPS monitor with thin bezels and 75Hz refresh rate
- Flicker-Free technology and Blue Light Filter for reduced eye fatigue
- FreeSync technology enables smooth frame rates to aid you in battle
- Optimized view settings offer "Game," "Movie," "Web," "Text," and "Mono" presets
- The VA2256-MHD supports laptops, PCs, Macs and more with HDMI, DisplayPort and VGA inputs



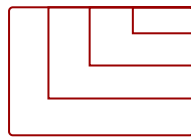
Future Proof inputs for flexible connectivity options



22
DISPLAY



IPS
PANEL



1920 x 1080
RESOLUTION



- x1 HDMI 1.4
- x1 DisplayPort
- x1 VGA
- x2 Audio (In/Out)
- 2x 2-watt integrated speakers

Product Description

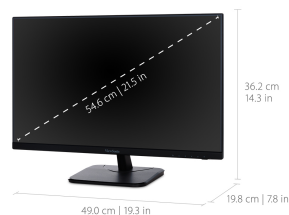
With future-proof connectivity, the ViewSonic® VA2256-mhd is a productivity-boosting monitor perfect for business professionals. Designed with SuperClear® IPS panel technology for wide-angle viewing and incredibly vivid colors, this monitor also features a 3-sided frameless design for a seamless viewing experience in multi-monitor setups. Extensive connectivity options include VGA, HDMI, and DisplayPort so that you can connect to a variety of HD and analog devices – today and tomorrow. In addition, Flicker-Free technology and a Blue Light Filter help to minimize eye strain from extended viewing periods. With ViewSonic’s industry-leading 3-year limited warranty, this monitor is a solid long-term investment for enterprise and home applications.

Specifications

	More Information
UPC	766907961812
Screen Size	22
Viewable Area (in.)	21.5
Panel Type	IPS
Display Resolution	1920 x 1080
Static Contrast Ratio	1,000:1
Dynamic Contrast Ratio	50,000,000:1
Light Source	LED
Brightness	250 cd/m2
Colors	16.7M
Color Space Support	6 bits + Hi FRC
Aspect Ratio	16:9
Response Time (Typical GTG)	15ms
Response Time (GTG w/OD)	7ms
Viewing Angles	178° horizontal, 178° vertical
Backlight Life (Hours)	30,000
Panel Surface	Anti-glare, Hard coating (3H)
PC Resolution (max)	1920 x 1080
Mac® Resolution (max)	1920 x 1080
3.5mm Audio In	1
3.5mm Audio Out	1
VGA	1
HDMI 1.4 In	1
DisplayPort	1
Internal Speakers	2W (x2)
Eco Mode (Conserve)	14W
Eco Mode (optimized)	18W
Consumption (typical)	21W
Consumption (max)	31W
Voltage	AC 100-240V (universal), 50-60Hz
Stand-by	0.5W
Power Supply	Internal
Cable Organization	No

Kensington Lock Slot	1
Physical Controls	Key Buttons 1, 2, 3, 4, 5, 6 (Power)
On Screen Display	Auto Image Adjust, Contrast/Brightness, Input Select, Audio Adjust, Color Adjust, Information, Manual Image Adjust, Advanced Image Adjust, Setup Menu, Memory Recall (See user guide for complete OSD functionality)
Temperature	32-104° F (0 - 40° C)
Humidity (non-condensing)	20-90%
VESA Compatible	100 x 100 mm
Frequency Horizontal	HDMI: 15 ~ 83KHz, DP: 24 ~ 83KHz
Frequency Vertical	HDMI: 50 ~ 75Hz, DP: 50 ~ 75Hz
Digital Sync	TMDS for HDMI, PCI-E for DisplayPort
Tilt (Forward/Back)	4° / 20°
Net (lbs)	7.3
Net Without Stand (lbs)	6.4
Gross (lbs)	10.6
Net (kg)	3.3
Net Without Stand (kg)	2.9
Gross (kg)	4.8
Packaging (in.)	21.4 x 15.1 x 5.0
Physical (in.)	19.3 x 14.3 x 7.8
Physical Without Stand (in.)	19.3 x 11.7 x 1.9
Packaging (mm)	544.0 x 384.0 x 128.0
Physical (mm)	490.0 x 362.3 x 198.4
Physical Without Stand (mm)	490.0 x 296.6 x 48.3
Regulations	cULus, FCC-B, ICES003, Energy Star, Mexico Energy, MX-CoC
Package Contents	VA2256-mhd Display, Power Cable, HDMI to HDMI (1.5m), Quick Start Guide
Recycle/Disposal	Please dispose of in accordance with local, state or federal laws.
Warranty	Three-year limited warranty on parts, labor and backlight

UPC: 766907961812



Contact Sales
ViewSonic.com
 888.881.8781
 email:
salesinfo@viewsonic.com