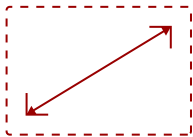


VA2446MH-LED-S

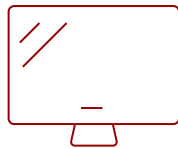
## Key Features

REFURBISHED

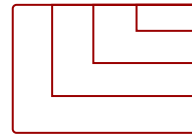
- Full HD 1080p Resolution
- Enhanced Viewing Comfort
- The Power of HDMI
- Dual Integrated Speakers



24  
DISPLAY



MVA  
PANEL



1920 x 1080  
RESOLUTION



## Product Description

The ViewSonic® VA2446mh-LED is a 24" (23.6" viewable) widescreen monitor with a LED backlight and a glossy, thin-bezel design ideal for use in the home or at the office. With Full HD 1920x1080 resolution and a 50M:1 MEGA Dynamic Contrast Ratio, the VA2446mh-LED delivers stunning brightness and contrast, while a quick 5ms response time ensures crisp pictures and smooth playback. As a complete multimedia package, the display also includes a pair of integrated speakers. VGA and HDMI inputs provide flexible and convenient connectivity, while a VESA-compatible mount offers additional flexibility. With an efficient LED backlight and energy-saving Eco-mode, the VA2446mh-LED is an environmentally friendly display choice. In addition, a 3-year limited warranty, along with one of the industry's best pixel performance policies provides great value for the stylish, high-performance VA2446mh-LED display.

## Specifications

### More Information

<b>UPC</b>	766907952315
<b>Screen Size</b>	24
<b>Viewable Area (in.)</b>	23.6
<b>Panel Type</b>	MVA
<b>Display Resolution</b>	1920 x 1080
<b>Static Contrast Ratio</b>	3,000:1
<b>Dynamic Contrast Ratio</b>	50,000,000:1
<b>Light Source</b>	LED
<b>Brightness</b>	300 cd/m <sup>2</sup>

<b>Colors</b>	16.7M
<b>Color Space Support</b>	(6-Bit+HI-FRC)
<b>Aspect Ratio</b>	16:9
<b>Response Time (Typical GTG)</b>	5ms
<b>Viewing Angles</b>	178° horizontal, 178° vertical
<b>Backlight Life (Hours)</b>	40,000
<b>Panel Surface</b>	Anti-glare, Hard coating (3H)
<b>PC Resolution (max)</b>	1920 x 1080
<b>Mac® Resolution (max)</b>	1920 x 1080
<b>3.5mm Audio In</b>	1
<b>3.5mm Audio Out</b>	1
<b>VGA</b>	1
<b>HDMI 1.4 In</b>	1
<b>Internal Speakers</b>	2.5W (x2)
<b>Eco Mode (Conserve)</b>	17W
<b>Eco Mode (optimized)</b>	21W
<b>Consumption (typical)</b>	26W
<b>Consumption (max)</b>	28W
<b>Voltage</b>	AC 100-240V (universal), 50-60Hz
<b>Stand-by</b>	0.5W
<b>Cable Organization</b>	No
<b>Kensington Lock Slot</b>	1
<b>Physical Controls</b>	1, 2, 3, 4, Power
<b>On Screen Display</b>	Auto Image Adjust, Contrast/Brightness, Input Select, Audio Adjust, Color Adjust, Information, Manual Image Adjust, Advanced Image Adjust, Setup Menu, Memory Recall (See user guide for complete OSD functionality)
<b>Temperature</b>	32-104° F (0 - 40° C)
<b>Humidity (non-condensing)</b>	20-90%
<b>VESA Compatible</b>	100 x 100 mm
<b>Frequency Horizontal</b>	24 ~ 82KHz
<b>Frequency Vertical</b>	50 ~ 75Hz
<b>Digital Sync</b>	TMDS
<b>Tilt (Forward/Back)</b>	5° / 22°
<b>Net (lbs)</b>	9.02
<b>Net Without Stand (lbs)</b>	8.1
<b>Gross (lbs)</b>	12.0
<b>Net (kg)</b>	4.1

<b>Net Without Stand (kg)</b>	3.7
<b>Gross (kg)</b>	5.4
<b>Packaging (in.)</b>	24.6 x 16.9 x 4.7
<b>Physical (in.)</b>	22.3 x 15.7 x 8.3
<b>Physical Without Stand (in.)</b>	22.3 x 13.6 x 1.9
<b>Packaging (mm)</b>	624.0 x 429.0 x 118.0
<b>Physical (mm)</b>	566.4 x 397.4 x 211.2
<b>Physical Without Stand (mm)</b>	566.4 x 346.3 x 48.0
<b>Regulations</b>	cULus, FCC-B, ICES003, Energy Star, EPEAT, Mexico Energy, MX-CoC, CE, REACH, WEEE, eAC, UkrSEPRO
<b>Package Contents</b>	LCD Display, Power Cable , VGA Cable , Audio Cable , Quick Start Guide
<b>Recycle/Disposal</b>	Please dispose of in accordance with local, state or federal laws.
<b>Warranty</b>	*Refurbished. 30-day DOA policy for full refund, with a 90-day repair warranty on parts and labor.
<b>Classification</b>	Refurbished

UPC: 766907952315



### Contact Sales

[ViewSonic.com](http://ViewSonic.com)

888.881.8781

email: [salesinfo@viewsonic.com](mailto:salesinfo@viewsonic.com)