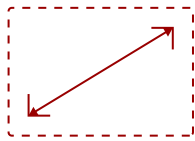
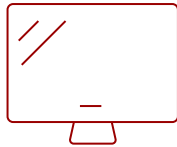
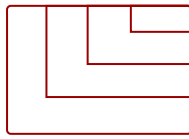


XG2560 - 25" 240HZ 1MS 1080P G-SYNC GAMING MONITOR

Key Features

- 240Hz refresh rate
- NVIDIA G-Sync™ Technology
- Rapid Response Time
- Black Stabilization for Ultimate Visibility
- Game Mode Hotkey
- NVIDIA Ultra Low Motion Blur Technology

**25
DISPLAY****TN
PANEL****1920 x 1080
RESOLUTION**

Product Description

When your gameplay relies on split-second decisions and pure instinct, you need a gaming monitor as fast as your reflexes. With an incredible 240Hz refresh rate, as well as NVIDIA's G-Sync Technology™, the ViewSonic® XG2560 monitor virtually eliminates screen tearing and stuttering so you can react instantly and in the moment. The XG2560 also combines NVIDIA ULMB (Ultra Low Motion Blur) technology with a 1ms response time to deliver incredibly smooth, blur-free gaming and crystal-clear visuals. For a game-winning competitive edge, a Game Mode feature optimizes visuals for FPS, RTS and MOBA. On top of that, a black stabilization function helps you target enemies lurking in the dark, while the monitor maintains brilliantly rich colors and contrast. With a gamer-inspired ergonomic stand that features an integrated headphone hook and cable management functionality, the XG2560 has all you need to conquer your gaming and entertainment quests.

Specifications

More Information

UPC	766907937312
Screen Size	25
Viewable Area (in.)	24.5
Panel Type	TN
Display Resolution	1920 x 1080
Display Resolution	Full HD (1920x1080)
Static Contrast Ratio	1,000:1

Dynamic Contrast Ratio	120,000,000:1
Light Source	WLED
Brightness	400 cd/m ²
Colors	16.7M
Color Space Support	8-Bit
Aspect Ratio	16:9
Response Time (Typical GTG)	1ms
Viewing Angles	170° horizontal, 160° vertical
Backlight Life (Hours)	30,000
Panel Surface	Anti-glare, Hard coating (3H)
Refresh Rate	240Hz
Adaptive Sync	NVIDIA G-Sync
PC Resolution (max)	1920 x 1080
Mac® Resolution (max)	1920 x 1080
USB 3.0 Type A	4
USB 3.0 Type B	1
3.5mm Audio Out	1
HDMI 1.4 In	1
DisplayPort	1
Internal Speakers	3W (x2)
Eco Mode (Conserve)	22W
Eco Mode (optimized)	26W
Consumption (typical)	30W
Consumption (max)	45W
Voltage	AC 100-240V (universal), 50-60Hz
Stand-by	0.5W
Power Supply	External
Cable Organization	No
Kensington Lock Slot	1
Physical Controls	1, 2, 3, 4, 5, Power
On Screen Display	Auto Image Adjust, Contrast/Brightness, Input Select, Audio Adjust, Color Adjust, Information, Manual Image Adjust, Advanced Image Adjust, Setup Menu, Memory Recall (See user guide for complete OSD functionality)
Temperature	32-104° F (0 - 40° C)
Humidity (non-condensing)	5-90%
VESA Compatible	100 x 100 mm
Frequency Horizontal	HDMI (v1.4): 30~90KHz, DisplayPort (v1.2): 15~255KHz

Frequency Vertical	HDMI (v1.4): 24~60KHz, DisplayPort (v1.2): 24~240Hz
Digital Sync	TMDS for HDMI 1.4, PCI-E for DisplayPort 1.2
Height Adjust	100 mm / 3.9 in
Swivel	45°
Pivot (Right/Left)	90° / 0°
Tilt (Forward/Back)	5° / 15°
Net (lbs)	16.1
Net Without Stand (lbs)	8.8
Gross (lbs)	22.1
Net (kg)	7.3
Net Without Stand (kg)	4.0
Gross (kg)	10.0
Packaging (in.)	27.2 x 16.2 x 9.0
Physical (in.)	22.3 x 16.1 x 10.2
Physical Without Stand (in.)	22.3 x 13.1 x 3.0
Packaging (mm)	692.0 x 412.0 x 229.0
Physical (mm)	566.0 x 408.9 x 260.0
Physical Without Stand (mm)	566.0 x 333.1 x 76.8
Regulations	cULus, FCC-B, ICES003, Mexico-CoC, Mexico Energy
Package Contents	LCD Display, 65W AC/DC Adapter, Power Cable, DisplayPort Cable, USB3.0 Cable, Quick Start Guide
Recycle/Disposal	Please dispose of in accordance with local, state or federal laws.

UPC: 766907937312



Contact Sales

ViewSonic.com

888.881.8781

email:

salesinfo@viewsonic.com