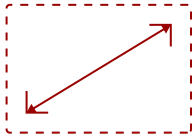


VA2759-SMH-S

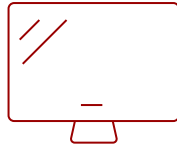
Key Features

REFURBISHED

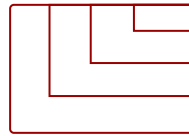
- SuperClear® IPS panel technology
 - Frameless design
 - Versatile connectivity
 - Full HD 1080p resolution
 - Superior color rendering and intuitive settings
-



27
DISPLAY



IPS
PANEL



Up to 1920x1080 non-interlaced
RESOLUTION



Product Description

The ViewSonic® VA2759-smh is a 27" Full HD LED monitor designed for both office and home use. With SuperClear® IPS Panel technology, this monitor offers best-in-class screen performance with ultra-wide viewing angles. Vivid 1920x1080 resolution and dual speakers, combined with a sleek edge-to-edge frameless design, deliver an immersive viewing experience for home entertainment and multimedia applications. What's more, the minimalistic design of this monitor makes it perfect for nearly seamless multi-screen setups. HDMI and VGA inputs deliver flexible connectivity options for both computing and gaming environments, while ViewSonic's exclusive ViewMode feature provides intuitive presets for optimized screen performance in different applications. In addition, Flicker-Free technology and a Blue Light Filter help to minimize eyestrain from extended viewing periods. With ViewSonic's industry-leading 3-year limited warranty, this monitor is a solid long-term investment for enterprise and home applications.

Specifications

More Information

UPC	766907956214
Screen Size	27
Viewable Area (in.)	27
Panel Type	IPS
Display Resolution	1920 x 1080
Static Contrast Ratio	1,000:1
Dynamic Contrast Ratio	50,000,000:1
Light Source	LED

Brightness	250 cd/m2
Colors	16.7M
Response Time (Typical GTG)	14ms
Response Time (GTG w/OD)	7ms
Viewing Angles	178° horizontal, 178° vertical
Backlight Life (Hours)	30,000
Panel Surface	Anti-glare, hard-coating (3H)
PC Resolution (max)	Up to 1920x1080 non-interlaced
Mac® Resolution (max)	Up to 1920x1080
3.5mm Audio In	1
3.5mm Audio Out	1
HDMI In	1
VGA	1
Power in	3-pin plug (CEE22)
Internal Speakers	2-watt (x2)
Eco Mode (Conserve)	17W
Eco Mode (optimized)	22W
Consumption (typical)	26W
Consumption (max)	29W
Voltage	AC 100-240V (universal), 50-60Hz
Cable Organization	No
Kensington Lock Slot	1
Physical Controls	1, 2, Down, Up, Power
On Screen Display	Auto Image Adjust, Contrast/Brightness, Input Select, Audio Adjust, Color Adjust, Information, Manual Image Adjust, Advanced Image Adjust, Setup Menu, Memory Recall (See user guide for complete OSD functionality)
Temperature	32-104° F (0 - 40° C)
Humidity (non-condensing)	20-90%
VESA Compatible	100 x 100 mm
Frequency Horizontal	54~85.5kHz
Frequency Vertical	48~76Hz
Analog Sync	Separate Sync, Composite Sync, Sync on Green, TMDS
Net (lbs)	9.9
Net Without Stand (lbs)	8.8
Gross (lbs)	15.2
Net (kg)	4.5
Net Without Stand (kg)	4.0

Gross (kg)	6.8
Packaging (in.)	27.3 x 20.3 x 6.5
Physical (in.)	24.5 x 17.6 x 9.3
Physical Without Stand (in.)	24.5 x 14.7 x 1.9
Packaging (mm)	693 x 516 x 164
Physical (mm)	622.5 x 446.3 x 235
Physical Without Stand (mm)	622.5 x 372.8 x 48.6
Regulations	cULus, FCC-B w/ ICES003, Energy Star, Mexico-CoC, Mexico Energy, CE, EMC, CB, RoHS Green Bom & RoHS DoC, REACH SVHC List & DoC, ErP, WEEE
Package Contents	VA2759-smh monitor, Power cable, Audio cable, VGA cable, Quick Start Guide, ViewSonic Wizard CD
Recycle/Disposal	Please dispose of in accordance with local, state or federal laws.
Warranty	*Refurbished. 30-day DOA policy for full refund, with a 90-day repair warranty on parts and labor.
Classification	Discontinued

UPC: 766907956214



Contact Sales

ViewSonic.com

888.881.8781

email: salesinfo@viewsonic.com