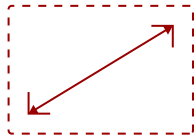


BCP100

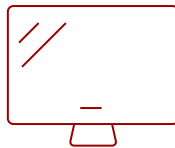
## Key Features

---

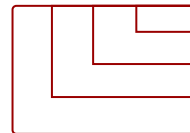
- 100" screen with 16:9 aspect ratio
- Designed for projectors with 0.3 throw ratio or less
- Diffuses unwanted ambient light
- Wide viewing angles
- Easy to assemble and install



100  
DISPLAY



PANEL



RESOLUTION

## Product Description

---

The ViewSonic® BrilliantColorPanel™ BCP100 is the ideal screen for ultra-short throw projectors with a 0.30 throw ratio or less. With a 100" screen size and 16:9 aspect ratio, the BCP100 is designed to deliver huge 1080p images. By diffusing high ambient light, this screen enhances contrast and helps to eliminate washed out images, making it perfect for businesses, classrooms, public displays, and home theaters. With a simplistic design, the BCP100 can be quickly and easily assembled and mounted with the included hardware.

## Specifications

---

### More Information

<b>UPC</b>	766907858211
<b>Screen Size</b>	100
<b>Throw Ratio</b>	<0.3
<b>Aspect Ratio</b>	16:9


<b>Peak Gain</b>	0.6 (+/-) 0.05
<b>Half Gain Angle</b>	80°
<b>Frame Width</b>	0.43" or 11mm
<b>Frame Depth</b>	1.4" or 30mm
<b>Wireless Connectivity</b>	N/A
<b>Packaging (in.)</b>	91.7 x 15.0 x 6.3
<b>Physical (in.)</b>	88.0 x 49.9 x 1.4
<b>Net (lbs)</b>	27.6
<b>Gross (lbs)</b>	50.7
<b>Warranty</b>	90 days

UPC: 766907858211



### Contact Sales

[ViewSonic.com](http://ViewSonic.com)

888.881.8781 

email: [salesinfo@viewsonic.com](mailto:salesinfo@viewsonic.com) 