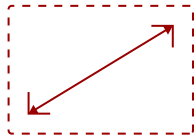




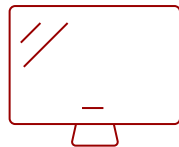
TD2430 - 24" 1080P 10-POINT MULTI TOUCH MONITOR WITH HDMI, DP, AND VGA

Key Features

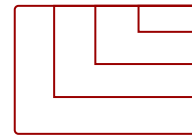
- 24 Inch Full HD (1920x1080p) LED touch monitor with 60Hz refresh rate
- Robust 10-point multi-touch technology feature a robust, pressure-sensing touchscreen
- Freestanding tablet design with muted black finish, stable adjustable stand, and 7H scratch resistant surface
- 50M:1 MEGA Dynamic Contrast Ratio delivers sharp, crisp images
- MacOS users can access touch and gesture controls on touch displays connected to their Apple devices using ViewSonic's vTouch driver. Not available for iPhone and iPad
- The TD2430 supports laptops, PCs, Macs and POS Systems with USB, HDMI, DisplayPort and VGA inputs



24
DISPLAY



MVA
PANEL



1920 x 1080
RESOLUTION



Product Description

Laid flat or angled for customized comfort, this display delivers touchscreen versatility to the max. Offering fantastic flexibility for retail, education, or business settings, the ViewSonic® TD2430 is a 24" (23.6" viewable) Full HD display with 10-point multi-touch functionality. Delivering adjustable positioning, wide-angle viewing, and a durable design, the TD2430 has everything to accommodate your unique needs. Adding even more convenience, cross-compatibility with a wide range of operating systems includes Windows 10, and certain Android and Linux versions.* With a sleek edge-to-edge screen and frameless bezel, this intuitive touchscreen performs like your favorite tablet or smartphone to deliver a highly accurate, ultra-responsive touch experience ideal for interactivity in public environments, kiosk and wayfinding applications, classroom settings, and more. *Supports Windows 7/8/10, Linux 2.6.38 or later, and Android 4.0 or later.

Specifications

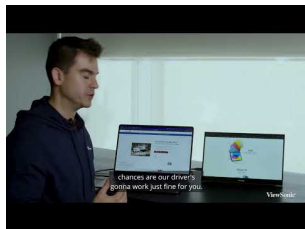
More Information

UPC	766907846911
Screen Size	24

Viewable Area (in.)	23.6
Display Resolution	1920 x 1080
Static Contrast Ratio	3,000:1
Dynamic Contrast Ratio	50,000,000:1
Brightness	250 cd/m2
Backlight Life (Hours)	40,000
Response Time (Typical GTG)	25ms
Panel Type	MVA
Colors	16.7M
Viewing Angles	178° horizontal, 178° vertical
Light Source	LED
Panel Surface	7H Scratch Resistant Surface Hardness
Aspect Ratio	16:9
PC Resolution (max)	1920 x 1080
Touch Technology	Projective Capacitive
Touch Points	10-Point Touch
USB Type A	2
USB Type B	1
VGA	1
HDMI 1.4 In	1
DisplayPort	1
Power in	DC 12V / 4.0A
Internal Speakers	2.5W (x2)
Frequency Horizontal	Analog: 24 ~ 82Hz, Digital: 15 ~ 82Hz
Frequency Vertical	Analog: 50 ~ 75Hz, Digital: 24 ~ 75Hz
Analog Sync	Separate Sync / Composite Sync / Sync on Green, TMDS, PCI-E
Eco Mode (Conserve)	19W
Eco Mode (optimized)	22W
Consumption (typical)	25W
Consumption (max)	28W
Voltage	AC 100-240V (universal), 50-60Hz
Stand-by	0.5W
Physical Controls	1, 2, Up, Down, Power
On Screen Display	Auto Image Adjust, Contrast/Brightness, Input Select, Audio Adjust, Color Adjust, Information, Manual Image Adjust, Advanced Image Adjust, Setup Menu, Memory Recall (See user guide for complete OSD functionality)
Temperature	32-104° F (0 - 40° C)

Humidity (non-condensing)	20-90%
Tilt (Forward/Back)	20° - 53°, 90° (Flat)
Kensington Lock Slot	1
VESA Compatible	100 x 100 mm
Gross (kg)	7.1
Net Without Stand (kg)	5.5
Net (lbs)	12.2
Gross (lbs)	15.6
Packaging (mm)	643 x 435 x 140
Physical (mm)	573 x 353 x 47
Packaging (in.)	25.3 x 17.1 x 5.5
Physical (in.)	22.6 x 13.9 x 1.9
Regulations	cTUVus, FCC-B w/ ICES003, DOE Energy Star 7.0, DOE EPEAT, TUV-MX-CoC, Mexico Energy, NRCan
Package Contents	LCD Display, AC/DC Adapter, Power Cable, HDMI Cable, USB3.0 Upstream Cable , Audio Cable , Quick Start Guide, ViewSonic Wizard CD-ROM
Warranty	Three-year limited warranty on parts, labor and backlight
Recycle/Disposal	Please dispose of in accordance with local, state or federal laws.

UPC: 766907846911



Contact Sales

ViewSonic.com

888.881.8781

email: salesinfo@viewsonic.com