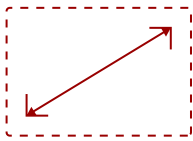


PJD5155-S

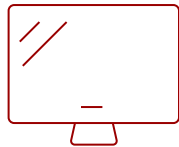
Key Features

REFURBISHED

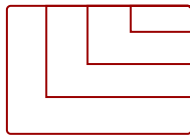
- Amazing color accuracy
- Up to 3,300 ANSI lumens, and 20,000:1 contrast ratio
- 3D Blu-ray ready HDMI input
- Choice of 5 view settings for a variety of usage scenarios
- SonicExpert technology delivers enhanced sound with an enlarged speaker chamber and a powerful amplifier
- Intuitive interface includes tactile keypad, top lamp door, and optional cable management system



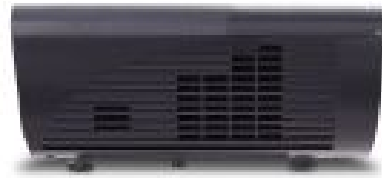
30 - 300 in. / 0.76 - 7.62 m
DISPLAY



PANEL



1600 x 1200
RESOLUTION



Product Description

The ViewSonic® LightStream™ PJD5155 price-performance projector features 3,300 lumens, native SVGA 800 x 600 resolution, and intuitive, user-friendly design. Exclusive SuperColor™ technology offers a wide color gamut for beautiful image production in nearly any environment, while sound enhancement technology delivers improved sound quality. The PJD5155 also features extensive connectivity including HDMI, 2 x VGA, Composite Video, S-Video, 1 x VGA output and Audio in/out. An energy-saving DynamicEco® feature reduces power consumption by up to 70%, and extends the lamp life by up to 10,000 hours. With advanced audiovisual features, flexible connectivity options, and an affordable price, the PJD5155 is ideal for use in education and small business environments.

Specifications

| | More Information |
|----------------------------|------------------|
| UPC | 766907868418 |
| Light Source | DLP Lamp |
| Display Resolution | SVGA (800x600) |
| Display Resolution | 800 x 600 |
| Brightness (Lumens) | 3,300 ANSI |

| | |
|--|--|
| Screen Size | 30 - 300 in. / 0.76 - 7.62 m |
| Throw Distance | 3.3 - 32.8 ft. / 1.0 - 8.0 m |
| Throw Ratio | 1.86~2.04 |
| Keystone | Vertical digital keystone correction: (\pm 40°) |
| Lens | 1.1x Manual optical zoom / manual optical focus |
| Light Source (watt) | 190 |
| Light Source Life, Normal (hours) | 5000 |
| Light Source Life, Dynamic Eco-Mode (hours) | 10000 |
| Color Depth | 30 bits, 1.07B Color (10+10+10) |
| Dynamic Contrast Ratio | 20,000:1 |
| Aspect Ratio | 4:3 (native), 16:9 |
| Input Lag | 37ms |
| Frequency Horizontal | 15-102KHz |
| Frequency Vertical | 23-120Hz |
| PC Resolution (max) | 1600 x 1200 |
| Mac® Resolution (max) | 1600 x 1200 |
| 3.5mm Audio Out | 1 |
| 3.5mm Audio In | 1 |
| Control (RS-232) | 1 |
| HDMI 1.4 In | 1 |
| VGA In | 2 |
| VGA Out | 1 |
| Composite RCA Video In | 1 |
| S-Video In | 1 |
| Mini USB | 1 |
| Internal Speakers | 2W (x1) |
| Voltage | 100~240VAC (Auto Switching), 50-60Hz (universal) |
| Consumption (max) | 265W |
| Stand-by | <0.5W |
| Physical Controls | Power, keystone/arrow keys, left/blank, menu/exit,right/panel key lock, mode/enter, auto, source |
| On Screen Display | Display, Picture, Source, System Setup (Basic), SystemSetup (Advanced), Information(See user guide for full OSD functionality) |
| Temperature | 32-104° F (0 - 40° C) |
| Humidity (non-condensing) | 10-90% |
| Normal | 32dB |
| Eco-Mode | 27dB |

| | |
|-------------------------------------|---|
| Kensington Lock Slot | 1 |
| Net Without Stand (lbs) | 4.6 |
| Gross (lbs) | 7.5 |
| Net Without Stand (kg) | 2.1 |
| Gross (kg) | 3.4 |
| Packaging (in.) | 16.0 x 8.85 x 13.58 |
| Physical Without Stand (in.) | 12.44 x 8.98 x 4.08 |
| Packaging (mm) | 410 x 225 x 345 |
| Physical Without Stand (mm) | 316 x 228 x 103.7 |
| Regulations | CB, TUV-GS, UL/cUL, FCC (including ICES-003), CE,C-Tick, Mexico Energy, EAC, UkrSEPRO/EMC DOC,UL COC, TUV-S, PSB, KCC, KC, SASO, CCC, WEEE,RoHS, REACH, SVHC, ErP |
| Package Contents | PJD5155 projector, power cable, VGA cable, remote control with batteries, Quick Start Guide, ViewSonicWizard CD (with User Guide) |
| Warranty | *Refurbished. 30-day DOA policy for full refund, with a 90-day repair warranty on parts and labor. |
| Recycle/Disposal | Please dispose of in accordance with local, state or federal laws. |
| Classification | Discontinued |

UPC: 766907868418



Contact Sales

ViewSonic.com

888.881.8781

email:

salesinfo@viewsonic.com