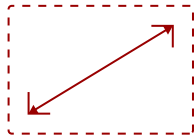


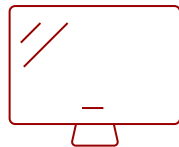
VG939SM - 19" 1024P ERGONOMIC IPS MONITOR WITH DVI AND VGA

Key Features

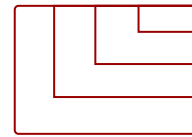
- 19 Inch 1024p IPS monitor with 75Hz refresh rate
- Advanced ergonomics (tilt, swivel, rotate and height) for all-day comfort
- Flicker-Free technology and Blue Light Filter for reduced eye fatigue
- Ideal for business-specific legacy applications
- The VG939SM supports laptops, PCs, Macs and more with VGA, DVI-D, and USB inputs



19
DISPLAY



IPS
PANEL



1280 x 1024
RESOLUTION



Product Description

Designed for legacy and customized applications that require a 5:4 aspect ratio, the ViewSonic VG939Sm 19" LED display delivers stunning screen performance with 1280x1024 resolution and SuperClear IPS panel technology. Versatile connectivity options include DVI and VGA inputs, as well as an integrated USB hub. It also features full ergonomic functionality including tilt, swivel, pivot, and height adjustments for maximum comfort and enhanced productivity. Equipped with ViewSonic's unique ViewMode feature, this display provides intuitive presets that deliver optimized screen performance for different applications. In addition, Flicker-Free technology and a Blue Light Filter help to eliminate eye strain from extended viewing periods. A uniform, matte ID design reduces glare and facilitates easy multiple monitor set up. Additional features include integrated speakers and VESA-mountable design. Featuring ENERGY STAR and EPEAT certification, as well as an energy-saving Eco-mode setting, the VG939Sm offers solid performance while delivering low TCO for a wide range of users.

Specifications

More Information

UPC

766907769012

Screen Size

19

Panel Type	IPS
Display Resolution	1280 x 1024
Static Contrast Ratio	1,000:1
Dynamic Contrast Ratio	20,000,000:1
Light Source	LED
Brightness	250 cd/m2
Colors	16.7M
Response Time (Typical GTG)	14ms
Viewing Angles	178° horizontal, 178° vertical
Backlight Life (Hours)	30,000
Panel Surface	3H Anti-glare, hard-coating
PC Resolution (max)	1280 x 1024
Mac® Resolution (max)	1280 x 1024
USB Type A	2
USB Type B	1
3.5mm Audio In	1
VGA	1
DVI-D	1
Internal Speakers	3W (x2)
Eco Mode (Conserve)	15W
Eco Mode (optimized)	16W
Consumption (typical)	18W
Consumption (max)	20W
Voltage	AC 100-240V (universal), 50-60Hz
Cable Organization	No
Kensington Lock Slot	1
Physical Controls	1, 2, Down, Up, Power
On Screen Display	Auto Image Adjust, Contrast/Brightness, Input Select, Audio Adjust, Color Adjust, Information, Manual ImageAdjust, Setup Menu, Memory Recall(See user guide for complete OSD functionality)
Humidity (non-condensing)	20-90%
VESA Compatible	100 x 100 mm
Frequency Horizontal	24~82kHz
Frequency Vertical	50~75Hz
Analog Sync	Separate Sync, Composite Sync, Sync on Green
Height Adjust	100 mm / 3.9 in
Swivel	360°


Pivot (Right/Left)	90° / 0°
Tilt (Forward/Back)	5° / 25°
Net (lbs)	9.6
Net Without Stand (lbs)	6.1
Gross (lbs)	13.3
Net (kg)	4.3
Net Without Stand (kg)	2.75
Gross (kg)	6
Packaging (in.)	19.02 x 16.5 x 6.7
Physical (in.)	16.4 x 14.8 x 8.0
Physical Without Stand (in.)	16.4 x 13.4 x 2.2
Packaging (mm)	483.0 x 419.0 x 170.0
Physical Without Stand (mm)	416.2 x 341.2 x 54.9
Regulations	cULus, FCC-B, ENERGY STAR 7.0, FCC (ICES003), EPEAT Certified, Mexico energy, UL-MX-CoC
Package Contents	VG939Sm monitor, Power cable, VGA cable, DVI cable, audio cable, Quick Start Guide, ViewSonic Wizard CD (User Guide)
Recycle/Disposal	Please dispose of in accordance with local, state or federal laws.
Warranty	Three-year limited warranty on parts, labor and backlight

UPC: 766907769012



Contact Sales

ViewSonic.com

888.881.8781 

email: salesinfo@viewsonic.com 