

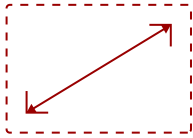
VX2452MH-S

## Key Features

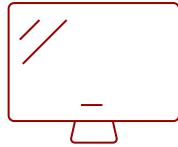
---

### REFURBISHED

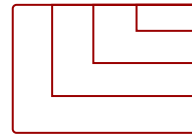
- ClearMotiv II delivers ultra-fast 2ms response time for blur-free gaming and entertainment
- Full HD 1080p resolution shows multimedia content in greater detail
- Ultra-high 50M:1 MEGA Dynamic Contrast Ratio delivers sharp, crisp images
- Proprietary Game Mode provides enhanced visibility and detail in dark scenes for ultimate gaming experience
- Versatile connectivity with VGA, DVI, and HDMI
- VESA-mountable design for flexible placement



24  
DISPLAY



TN  
PANEL



1920x1080  
RESOLUTION



## Product Description

---

ViewSonic's VX2452mh is a 24" (23.6" viewable) Full HD, glossy-finish display that offers the ultimate visual experience for gaming and multimedia entertainment. The VX2452mh features ClearMotivII technology that delivers 2ms ultra-fast response time for blur-free images during extreme gaming, and an ultra-high 50M:1 MEGA Dynamic Contrast Ratio for sharp, crisp color performance for enjoying movies. Integrated D-sub, DVI and HDMI inputs provide flexible connectivity for high-definition multimedia devices and gaming consoles, and dual built-in 2-watt stereo speakers complete the package for multimedia enjoyment. With a VESA-mountable design, the VX2452mh offers flexible mounting options for any of your gaming and video entertainment needs. A 3-year limited warranty and the industry's best pixel performance policy make the VX2452mh a great long-term investment

## Specifications

---

### More Information

<b>UPC</b>	766907867114
<b>Screen Size</b>	24
<b>Panel Type</b>	TN
<b>Display Resolution</b>	1920 x 1080
<b>Static Contrast Ratio</b>	1,000:1
<b>Dynamic Contrast Ratio</b>	20M:1
<b>Light Source</b>	LED
<b>Brightness</b>	300 cd/m <sup>2</sup>

<b>Response Time (Typical GTG)</b>	2ms
<b>Viewing Angles</b>	170° horizontal, 160° vertical
<b>Backlight Life (Hours)</b>	40,000
<b>Panel Surface</b>	Anti-glare, hard-coating (3H)
<b>PC Resolution (max)</b>	1920x1080
<b>Mac® Resolution (max)</b>	1920x1080
<b>3.5mm Audio In</b>	1
<b>3.5mm Audio Out</b>	1
<b>HDMI In</b>	1
<b>VGA</b>	1
<b>DVI-D</b>	1
<b>Internal Speakers</b>	2W (x2)
<b>Eco Mode (Conserve)</b>	15.8W
<b>Eco Mode (optimized)</b>	18.6W
<b>Consumption (typical)</b>	21.5W
<b>Voltage</b>	AC 100-240V (universal), 50-60Hz
<b>Cable Organization</b>	No
<b>Kensington Lock Slot</b>	1
<b>Temperature</b>	32-104° F (0 - 40° C)
<b>Humidity (non-condensing)</b>	20-90%
<b>VESA Compatible</b>	100 x 100 mm
<b>Frequency Horizontal</b>	24~82kHz
<b>Frequency Vertical</b>	50~75Hz
<b>Analog Sync</b>	Separate Sync
<b>Net (lbs)</b>	8.3
<b>Net Without Stand (lbs)</b>	7.6
<b>Gross (lbs)</b>	11.9
<b>Net (kg)</b>	3.8
<b>Net Without Stand (kg)</b>	3.5
<b>Gross (kg)</b>	5.4
<b>Packaging (in.)</b>	24.4 x 18.5 x 5.2
<b>Physical (in.)</b>	22.0 x 17.0 x 8.8
<b>Physical Without Stand (in.)</b>	22.0 x 14.0 x 2.1
<b>Packaging (mm)</b>	619.0 x 470.0 x 132.0
<b>Physical (mm)</b>	559.2 x 431.7 x 222.5
<b>Physical Without Stand (mm)</b>	559.2 x 356.7 x 53.0

**Regulations**

cULus, FCC-B, ICES003, Energy Star 7.0 (by panel), Mexico Energy, CE EMC, CB, RoHS Green BOM List & RoHS DoC, ErP, REACH SVHC List & DoC, WEEE, Custom Union, UkrSEPRO+DoC, EAC

**Package Contents**

VX2452mh display, power cable, VGA cable, DVI cable, audio cable, Quick Start Guide, ViewSonic Wizard CD

**Power Management**

ENERGY STAR® standards

**Recycle/Disposal**

Please dispose of in accordance with local, state or federal laws.

**Warranty**

\*Refurbished. 30-day DOA policy for full refund, with a 90-day repair warranty on parts and labor.

**Classification**


Discontinued, Refurbished

UPC: 766907867114



**Contact Sales**

[ViewSonic.com](http://ViewSonic.com)

888.881.8781 

email: [salesinfo@viewsonic.com](mailto:salesinfo@viewsonic.com) 