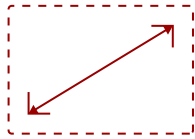


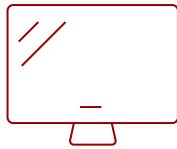
IFP8652-1C

Key Features

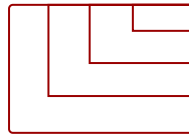
- Intuitive and Ultra-Responsive Touchscreen
- Front-Facing Soundbar
- Built-in Beamforming Microphone
- USB-C with Power Delivery
- myViewBoard Manager



86
DISPLAY



PANEL



RESOLUTION



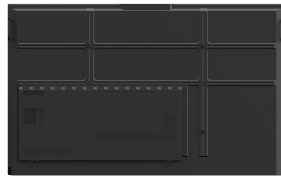
Product Description

The ViewSonic® ViewBoard® IFP8652-1C is an 86" interactive flat panel display with next-generation whiteboard technologies for immersive learning in any classroom environment. With a high-accuracy touchscreen and intelligent palm recognition technology, the IFP8652-1C delivers an intuitive digital whiteboard experience for everyone from the youngest of students to the most experienced teachers. Featuring 4K Ultra HD resolution, a powerful 45W stereo soundbar with a built-in subwoofer, and microphone array, this ViewBoard display delivers optimal images and sound for everyone in the classroom as well those learning remotely. With the integrated myViewBoard™ software ecosystem, this ViewBoard display enables teachers to access legacy files from the cloud, as well as build new interactive lessons. IT directors will be confident managing files from a secure cloud network, while curriculum directors will be pleased knowing that this software easily integrates with online resources.

Specifications

Display Type	LCD
Screen Size	86
Viewable Area (in.)	85.6
Light Source	LED
Resolution	3840 x 2160
Refresh Rate (Hz)	60
Aspect Ratio	16:9
Static Contrast Ratio	1,100:1
Dynamic Contrast Ratio	2,500:1
Backlight Life (Hours)	50,000
Brightness	350 cd/m2
Response Time (Typical GTG)	8ms
Viewing Angles	178° horizontal, 178° vertical
Panel Surface	Anti-glare 7H tempered glass 3.2mm
Ethernet LAN	10/100/1000MB GigaLAN
Wifi	Optional VB-WIFI-001 adapter, 802.11AX + Bluetooth 5.2
OS	ViewBoard OS based on Android 9.0
GPU	ARM Mali-G52
CPU	ARM Quad Core A73
CPU Processor Speed	1.8GHz
Memory	4GB LPDDR4
Storage	32GB eMMC
Microphone	Beamforming array x 8, noise cancelation
Internal Speakers	15W (x2)
Subwoofer	15W (x1)
HDMI 2.0 In	4
HDMI Out	1
VGA	1
SPDIF	1
USB 2.0	5
USB 2.0 Type B	2
USB 3.1 Type C	1
OPS PC Slot	1
RS232	1
Ethernet LAN (RJ45)	2
Voltage	100-240 VAC

Consumption (typical)	286.4W
Stand-by	<0.5W
Temperature	32-104° F (0 - 40° C)
Humidity (non-condensing)	10-90%
Touch Technology	Infrared
Touch Points	Windows: 33-Point Touch, Android: 20-Point Touch
Tip Detection	Dual tips, 2mm and 9mm
Other	Palm recognition, object awareness
Net (lbs)	151.4
Gross (lbs)	179.5
Net (kg)	68.7
Gross (kg)	81.4
Packaging (in.)	82.7 x 52.3 x 10.6
Physical (in.)	77 x 47.7 x 4.7
Packaging (mm)	2102.0 x 1330.0 x 270.0
Physical (mm)	1957.0 x 1211.0 x 120.0
VESA Compatible	800 x 600 mm
Screw Size	M8
Warranty	3-year limited warranty on parts, labor and backlight, onsite warranty
Recycle/Disposal	Please dispose of in accordance with local, state or federal laws.
PACKAGE CONTENTS	IFP7552-1C, Remote control with AAA battery, 3m touch USB cable, Touch pen x 2 (a set), eraser, Quick Start Guide + Compliance statement, RS232 adapter, Clamp x 5, Camera Plate, Screw x 8 (camera 2+2, wall mount 4), HDMI cable 3m, Typc-C cable 1.8 (Data &
Regulations	cTUVus, FCC, ENERGY STAR, EPEAT Silver, Mexico Energy, CE, CB, RoHS, ErP, WEEE



Contact Sales

ViewSonic.com

888.881.8781

email:

salesinfo@viewsonic.com