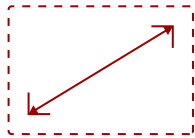


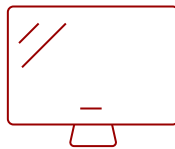
IFP5550-E4 - 55" 4K TOUCH ENABLED VIEWBOARD SMART DISPLAY WITH WIFI ADAPTER AND SLIM TROLLEY CART

Key Features

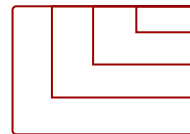
- All-in-One Solution
- ViewBoard Interactive Flat Panel
- Faster WiFi
- Slim Trolley Cart



55
DISPLAY



PANEL



RESOLUTION

Product Description

Ideal for education environments, this all-in-one ViewBoard Bundle includes a 55" ViewBoard IFP5550 4K interactive flat panel, a wireless AC adapter, and a VB-STND-005 slim trolley cart.

Specifications

More Information

Display Type	LCD
Screen Size	55
Viewable Area (in.)	55
Light Source	LED

Display Resolution	3840 x 2160
Refresh Rate	60Hz
Aspect Ratio	16:9
Static Contrast Ratio	1,200:1
Dynamic Contrast Ratio	5,000:1
Backlight Life (Hours)	50,000
Brightness	350 cd/m2
Response Time (Typical GTG)	8ms
Viewing Angles	178° horizontal, 178° vertical
Panel Surface	9H
Operation Rating	16/7
Ethernet LAN	(10/100/1000M) (Android 10/100, PC 10/100/1000)
OS	ViewBoard OS (embedded Android 8)
GPU	ARM Mali0G51
CPU	ARM Quad Core A73 + A53
CPU Processor Speed	A73: 1.1GHz, A53: 1.5GHz
Memory	3GB
Storage	32GB
Internal Speakers	10W (x2)
Subwoofer	15W (x1)
HDMI 2.0 In	3
VGA	1
3.5mm Audio In	1
3.5mm Audio Out	1
SPDIF Audio Out	1
USB 3.0	4
USB 2.0	3
Slot-in PC Slot	1
USB B Touch Port	2
RS232	1
Ethernet LAN (RJ45)	1
WIFI Module Slot	1
Intel® OPS Slot In (80-pin)	1
Voltage	100-240 VAC
Consumption (max)	350W
Consumption (typical)	81W

Stand-by	<0.5W
On Screen Display	Input, Volume, Backlight, Audio, Screen, Display, Adjust
Remote Control	Volume, Channel, Source, Mute, Back, Input, Menu
Temperature	32-104° F (0 - 40° C)
Humidity (non-condensing)	10-90%
Touch Technology	Infrared
Touch Points	Windows: 20, Android: 20
Tip Detection	Dual tips, 3mm and 8mm
Net (lbs)	108.4
Gross (lbs)	138.2
Net (kg)	49.2
Gross (kg)	62.7
Packaging (in.)	56.2 x 34.6 x 8.7
Physical (in.)	49.9 x 30.4 x 3.3
Packaging (mm)	1428.0 x 878.0 x 220.0
Physical (mm)	1268.0 x 773.0 x 85.0
VESA Compatible	400 x 200 mm
Warranty	3-year limited warranty on parts, labor and backlight, onsite warranty
Recycle/Disposal	Please dispose of in accordance with local, state or federal laws.
PACKAGE CONTENTS	IFP5550 display, WiFi Card, stylus pen x 2, power cable, remote control with batteries, ViewSonic Wizard CD (User Guide), Quick Start Guide
Regulations	cTUVus, FCC, Mexico Energy, CE, CB, RoHS, ErP, WEEE

Contact Sales

ViewSonic.com

888.881.8781

email: salesinfo@viewsonic.com