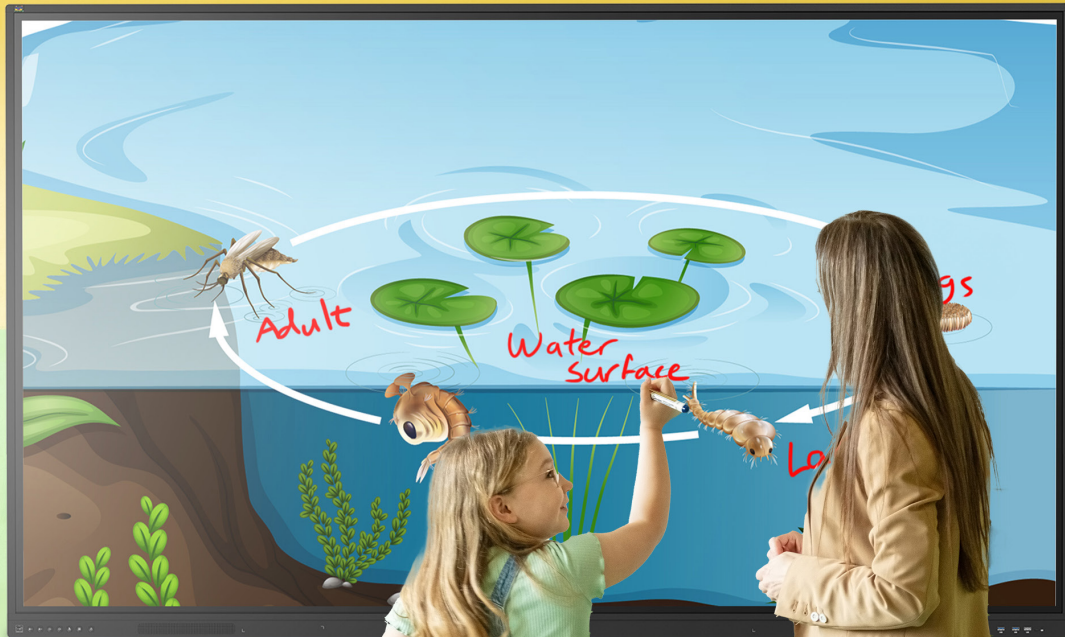
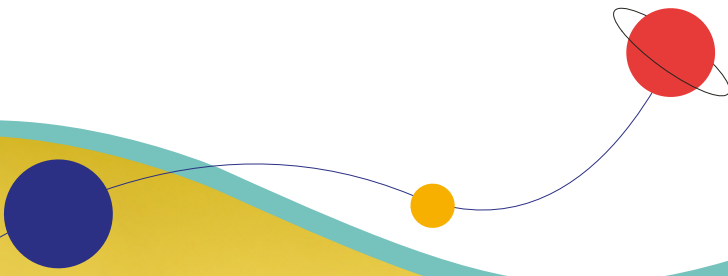
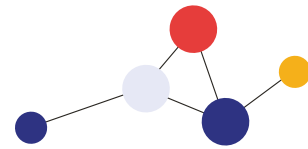


ViewSonic® | Education

# ViewBoard® IFPG1 Interactive Displays

Secure, Flexible Digital Whiteboards





# Secure Collaboration That's Built to Last

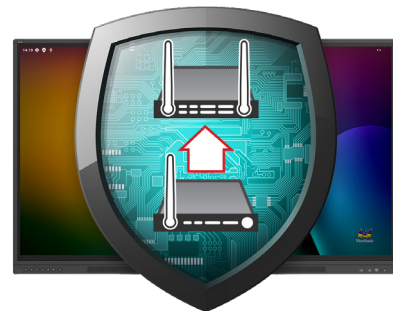
Customized to Your Classroom

Available in sizes ranging from 55" – 86", ViewSonic® ViewBoard® IFPG1 interactive displays are a **secure, OS-free presentation solution that empowers educators to create a digital whiteboard** that's perfectly tailored to their needs.

By giving schools the ability to use their own computing solution, ViewBoard IFPG1 interactive displays create a **higher standard of cybersecurity** that drastically reduces the potential for cyberattacks, streamlines integration and makes software upgrades effortless.

Plus, with no built-in WiFi connectivity or possible data leakage, IFPG1 interactive displays **safeguard student information with the care that it deserves.**

From big-picture presentations to intricate lessons, the future-proof ViewSonic® IFPG1 series of ViewBoard® interactive displays gives both teachers and students the **security, flexibility and hands-on interactivity** they need for years to come.



## OS-Free for Greater Security

By omitting a stock Android OS, the IFPG1 serves as a secure communications solution that significantly reduces the potential for digital vulnerabilities, malware exploits and other cyberattacks.



## Wi-Fi-Free Design

Hackers often enter networks via Wi-Fi. IFPG1 interactive displays can only connect to school services and cloud drives through a secure, wired connection, greatly reducing the risk of unauthorized access.



## Future-Proof Display

An OS-free design means that IT admins never have to worry about their OS becoming outdated or subject to security defects. When it's time to upgrade, simply swap out your computing solution to enjoy your display for years to come.



## Connect Trusted Devices

When it's time to use the display, educators can easily connect their trusted devices directly to the display. Lessons have never been more simple, secure or intuitive.



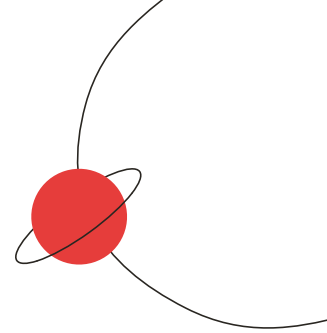
## No More Data Leakage

IFPG1 interactive displays do not collect or store any information locally, making data breaches substantially less likely.



## Add Ons for Greater Classroom Connectivity

Pair your ViewBoard® IFPG1 interactive display with a ViewSonic® slot-in PC to build the ultimate classroom solution. Experience faster connectivity, more processing power and greater storage with any of our recommended options.



### Recommended Slot-in PCs

SKU	CPU	RAM	SSD
VPC2C-W33-01	Celeron G5900T (no vPro)	8GB (8GB x 1)	256GB
VPC2C-W33-01-1B	Celeron G5900T (no vPro)	8GB (8GB x 1)	256GB
VPC35-W53-G1	Intel i5-1240P	16GB (16GB x 1)	256GB
VPC37-W53-G1	Intel i7-1260P	16GB (up to 32GB)	256GB
VPC-A31-01	MediaTek MT8195	8GB	128GB



## ViewBoard Specifications

IFPG1 Interactive Displays					
	MODEL	IFP55G1	IFP65G1	IFP75G1	IFP86G1
DISPLAY	Panel Size	55"	65"	75"	86"
	Operating System	OS-Free			
	Aspect Ratio	16:9			
	Native Resolution	UHD 3840x2160(Pixels)			
	Brightness	350 nits (Typ.)	400 nits (typ.)	400 nits (typ.)	400 nits (typ.)
	Backlight Life	50,000 hours			
	Surface Treatment	Anti-Glare Glass (9H)			
	Viewing Angle	178°			
	WriteAway™ Technology	Yes			
	TOUCH	Type/Tech	IR Recognition		
Touch Point		32767 x 32767			
Touch Pen		40-Point			
Pen Tip Diameter		Passive Pen			
INPUT	HDMI-IN	3			
	VGA	1			
	Audio	1			
	RS232	1			
	OPS	1			
OUTPUT	Audio	1			
LAN	RJ45	2			
USB	Type-A	6			
	Type-B	2			
	Type-C	1			
SPEAKERS		2 x 10W			
LAN SHARING		Yes			
AMBIENT LIGHT SENSOR		Yes			
WALL MOUNT (VESA-COMPATIBLE)		400 x 200	600 x 400	800 x 400	800 x 600

For more information contact your ViewSonic representative today.

ViewSonic Sales: (909) 444-8964 or [salesinfo@viewsonic.com](mailto:salesinfo@viewsonic.com)