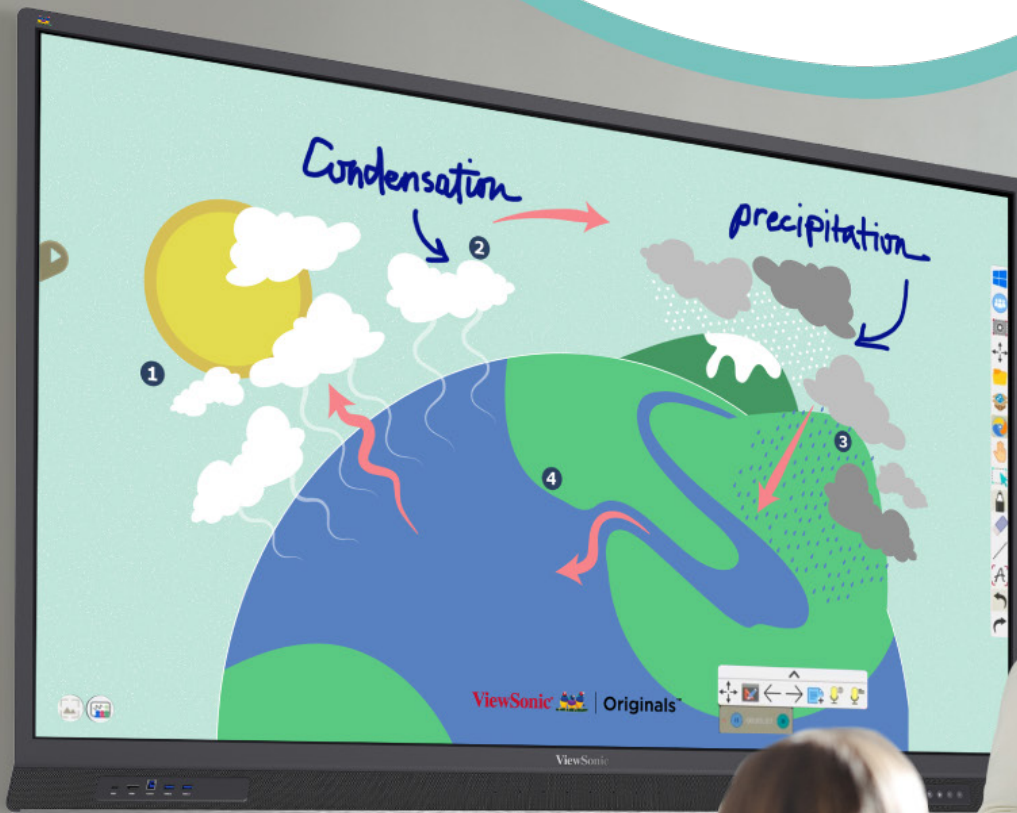


ViewSonic® | Education

ViewBoard® IFP52-2ED Interactive Displays

Android™ EDLA-Certified Solutions



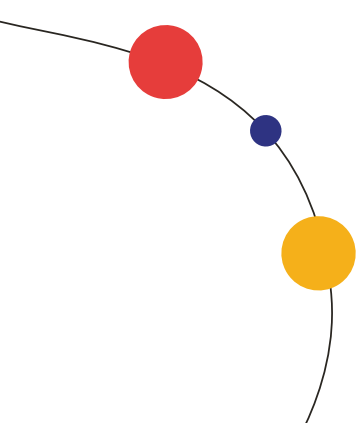


Seamless Integration with the Google Ecosystem

Android™ EDLA-Certified ViewBoard Displays

Our ViewBoard® IFP52-2ED series of interactive displays are Android™ EDLA (Enterprise Devices Licensing Agreement) certified to deliver optimal performance and seamless integration with the Google ecosystem. Teachers can easily access their Google accounts, hundreds of native education apps, files, and collaborative tools directly from the ViewBoard display.

Plus, with a high-accuracy touchscreen and intelligent IR recognition technology, these ViewBoard IFP52-2ED displays deliver an intuitive digital whiteboard experience. 4K Ultra HD resolution delivers optimal images for everyone in the room as well as those learning remotely. In addition, the integrated ViewSonic software suite enables easy content sharing and interactive presentations.





Native Access to the Google Education Ecosystem

Integrate more useful resources and tools into your lesson plans by accessing hundreds of apps through the Google Play Store. With a single sign-on, teachers can store and share files on Google Drive, edit files in Google Docs, share spreadsheets in Google Sheets, deliver presentations on Google Slides and so much more. Plus, teachers will enjoy access to the full Microsoft 365 suite (including Word, PowerPoint, Teams and more) from the Google Play Store.



Advanced Security

The IFP52-2ED series prioritizes security with built-in features like frequent Google updates, Google Play Protect, data encryption, and two-way authentication. Schools benefit further from management tools included in Google Workspace for Education, allowing features like strong passwords, two-step verification, data encryption, and remote control for IT in case of security incidents.

For additional flexibility, the IFP52-2ED series also integrates with Microsoft Intune and offers ViewSonic's own management software. With this combination of security and management features, the IFP52-2ED series provides a comprehensive solution for protecting schools and student data.



Hassle-Free Maintenance and Updates

Automatic Google updates ensure worry-free no-hassle maintenance.



Teach Your Way with myViewBoard Software



The myViewBoard® software suite helps you get the most out of your ViewBoard interactive display. It allows you to give real-time quizzes to both in-class students and remote learners; it lets students write, highlight text and share content; it delivers thousands more ways to make your lessons more engaging.

Android™ EDLA Slot-in PCs

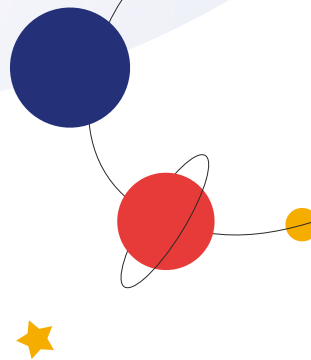


If the benefits of EDLA certification sound good, but you don't need to upgrade to a ViewBoard display or if you prefer a different form factor, we also offer EDLA-certified slot-in PCs. These PCs deliver all of the benefits explained above, and they can be easily plugged into compatible classroom displays.

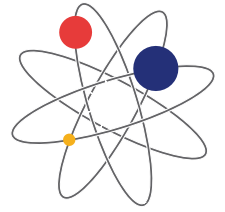




**Drive Engagement, Energize
and Motivate Students**



Customize Your Learning Spaces



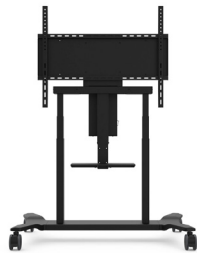
Mobile Mounting Options

VB-STND-001, VB-STND-007, VB-STND-008, VB-STND-009

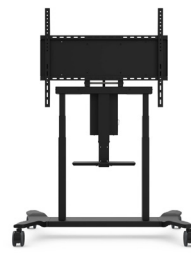
Sturdy rolling carts are certified UL and ADA compliant for safety and accessibility. Select models include motorized lift and tilt features and allow you to move the ViewBoard display from location to location for easy sharing of resources. Turn any area into a huddle space for impromptu brainstorming sessions by simply wheeling in your ViewBoard display.



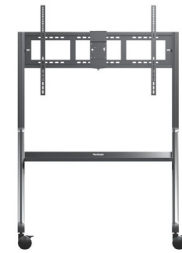
VB-STND-001



VB-STND-007



VB-STND-008



VB-STND-009

Fixed Mounting Options

WMK-047-2, VB-STND-004, VB-STND-006

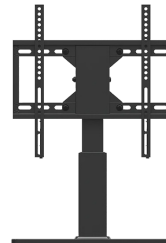
Easy-to-install fixed wall mounts and floor stands are certified UL and ADA compliant for safety and accessibility. They allow you to configure your learning spaces exactly as you need to be more inclusive and collaborative.



WMK-047-2



VB-STND-004



VB-STND-006



ViewBoard Specifications

MODEL		IFP6552-2ED, IFP7552-2ED, IFP8652-2ED		
DISPLAY	Panel Size	65"	75"	86"
	Type/Tech	TFT LCD Module with DLED Backlight, VA	TFT LCD Module with DLED Backlight, VA	TFT LCD Module with DLED Backlight, VA
	Display Area (mm)	1428.48(H) x 803.52 (V) (64.5" diagonal)	1650.24 (H) x 928.26 (V) (74.5" diagonal)	1895.04 (H) x 1065.96 (V) (85.6" diagonal)
	Aspect Ratio	16:9	16:9	16:9
	Native Resolution	UHD 3840x2160(Pixels)	UHD 3840x2160(Pixels)	UHD 3840x2160(Pixels)
	Colors	1.07B colors (8bit + FRC)	1.07B colors (8bit + FRC)	1.07B colors (8bit + FRC)
	Brightness	350 nits (Typ.)	350 nits (Typ.)	350 nits (Typ.)
	Contrast Ratio	4000:1(Typ.) 5000:1(Min. with DCR enabled)	5000:1(Typ.) 5000:1(Min. with DCR enabled)	4000:1(Typ.) 5000:1(Min. with DCR enabled)
	Response Time	6.5ms	8.5ms	8ms
	Viewing Angles	H = 178, V = 178 (Typ.)	H = 178, V = 178 (Typ.)	H = 178, V = 178 (Typ.)
Backlight Life	50,000 hours (Min.)	50,000 hours (Min.)	50,000 hours (Min.)	
Surface Treatment	Panel Anti-Glare 3H Glass Anti-Glare + Anti-Fingerprint 7H	Panel Anti-Glare 3H Glass Anti-Glare + Anti-Fingerprint 7H	Panel Anti-Glare 3H Glass Anti-Glare + Anti-Fingerprint 7H	
PLATFORM	Processor	Octa-Core CPU (A73*4 + A53*4)	Octa-Core CPU (A73*4 + A53*4)	Octa-Core CPU (A73*4 + A53*4)
	RAM	8GB LPDDR	8GB LPDDR	8GB LPDDR
	Storage	64GB eMMC5.0	64GB eMMC5.0	64GB eMMC5.0
TOUCH	Type/ Tech	IR Recognition	IR Recognition	IR Recognition
	Touch Resolution	32767 x 32767	32767 x 32767	32767 x 32767
INPUT	HDMI-IN	FRONT x1 (HDMI 2.0) (HDMI 3 support CEC) REAR x2 (HDMI 2.1) (HDMI 1 support CEC, ARC) (HDMI 2.0) (HDMI 2 support CEC)	FRONT x1 (HDMI 2.0) (HDMI 3 support CEC) REAR x2 (HDMI 2.1) (HDMI 1 support CEC, ARC) (HDMI 2.0) (HDMI 2 support CEC)	FRONT x1 (HDMI 2.0) (HDMI 3 support CEC) REAR x2 (HDMI 2.1) (HDMI 1 support CEC, ARC) (HDMI 2.0) (HDMI 2 support CEC)
	RGB / VGA	1	1	1
	DisplayPort	1	1	1
	Audio	1	1	1
	RS232	1	1	1
	SD/SDHC	N/A	N/A	N/A
	OPS	1 (OPS 80pin)	1 (OPS 80pin)	1 (OPS 80pin)
	HDMI-OUT	x1 (4K60Hz YUV444/422/420, 8bit)	x1 (4K60Hz YUV444/422/420, 8bit)	x1 (4K60Hz YUV444/422/420, 8bit)
OUTPUT	Audio	1 (Earphone out)	1 (Earphone out)	1 (Earphone out)
	SPDIF	1	1	1
	RJ45	1 in 1 out (10/100/1000M) (Front USB Type-C 10/100, Android & PC 10/100/1000)	1 in 1 out (10/100/1000M) (Front USB Type-C 10/100, Android & PC 10/100/1000)	1 in 1 out (10/100/1000M) (Front USB Type-C 10/100, Android & PC 10/100/1000)
USB	Type A	FRONT x2 (USB 3.0) REAR x 3 (USB 3.0 x2)(USB 2.0 x1)	FRONT x2 (USB 3.0) REAR x 3 (USB 3.0 x2)(USB 2.0 x1)	FRONT x2 (USB 3.0) REAR x 3 (USB 3.0 x2)(USB 2.0 x1)
	Type B	FRONT x1 (USB 3.0) REAR x2 (USB 3.0)	FRONT x1 (USB 3.0) REAR x2 (USB 3.0)	FRONT x1 (USB 3.0) REAR x2 (USB 3.0)
	Type C	FRONT x1 (USB 3.0) REAR x2 (USB 3.0)	FRONT x1 (DP 1.2, touch, 100M ethernet, USB 3.0, smart USB 2.0, PD 65W) REAR x2 (DP 1.2, touch, USB 3.0, smart USB 2.0, PD 100W)(USB 3.0)	FRONT x1 (DP 1.2, touch, 100M ethernet, USB 3.0, smart USB 2.0, PD 65W) REAR x2 (DP 1.2, touch, USB 3.0, smart USB 2.0, PD 100W)(USB 3.0)
SPEAKERS		15W x 2 + 15W x 1	15W x 2 + 15W x 1	15W x 2 + 15W x 1
Microphone array		8 array mic (distance: 5M typ., 8M max.)	8 array mic (distance: 5M typ., 8M max.)	8 array mic (distance: 5M typ., 8M max.)
CAMERA PLATE ON TOP FOR SCREW-IN WEBCAM INSTALLATION		Yes	Yes	Yes
EMBEDDED OS		Android 13	Android 13	Android 13
POWER	Voltage	100-240VAC +/- 10% Wide Range	100-240VAC +/- 10% Wide Range	100-240VAC +/- 10% Wide Range
	Consumption	On: 91.41W(Energy Star) Off: <0.5W	On:124.06W(Energy Star) Off: <0.5W	On:148.12W(Energy Star) Off: <0.5W
Wall Mount (VESA*)		500 x 400	600 x 400	800 x 600
OPERATING CONDITIONS	Temperature (°C)	0°C to 40°C	0°C to 40°C	0°C to 40°C
	Humidity	20% - 80% RH non-condensing	20% - 80% RH non-condensing	20% - 80% RH non-condensing
DIMENSIONS (W X H X D)	Physical (inch / mm)	1502.7 x 948.66 x 122.18 mm 59.161 x 37.349 x 4.81 in	1724.96 x 1073.96 x 121.37 mm 67.912 x 42.282 x 4.778 in	1971.16 x 1212.54 x 121.38 mm 77.605 x 47.738 x 4.779 in
	Packaging (inch / mm)	1618 x 1060 x 225 mm 63.7 x 41.7 x 8.9 in	1850 x 1160 x 225 mm 72.8 x 45.7 x 8.9 in	2116 x 1310 x 225 mm 83.3 x 51.6 x 8.9in
WEIGHT	Net (lb / kg)	94.8lb/43kg	121.3lb/55kg	154.3lb/70kg
	Gross (lb / kg)	114.6lb/52kg	145.5lb/66kg	183lb/83kg
REGULATIONS		US NRTL w/ CA,FCC-B w, DOE Energy Star,DOE EPEAT		
LOW BLUE LIGHT (LBL CERTIFICATE)		Yes	Yes	Yes
ENERGY STAR VERSION		ES8.0	ES8.0	ES8.0
PACKAGE CONTENTS		1. 3m power cord 2. Remote control with AAA battery 3. 3m touch USB cable 4. Touch pen x 2 (a set) 5. Quick Start Guide 6. RS232 adapter 7. Clamp x 5 8. Camera Plate 9. Screw x 8 (camera 2+2, wall mount 4) 10. HDMI cable 3m 11. AAA Battery x 2 12. Compliance statement 13. WiFi dongle		
COMPATIBLE SLOT-IN PC		VPC2-O series/VPC2-O-1B series/VPC12-WPO-15/16/VPC3-O series		



For more information contact your ViewSonic representative today.

ViewSonic Sales: (909) 444-8964 or salesinfo@viewsonic.com

Program, pricing, specifications and availability are subject to change without notice. Corporate names and trademarks stated herein are the property of their respective companies. Copyright © 2024, ViewSonic Corporation. All rights reserved. 3/24 [24VWB-EDU1119]

