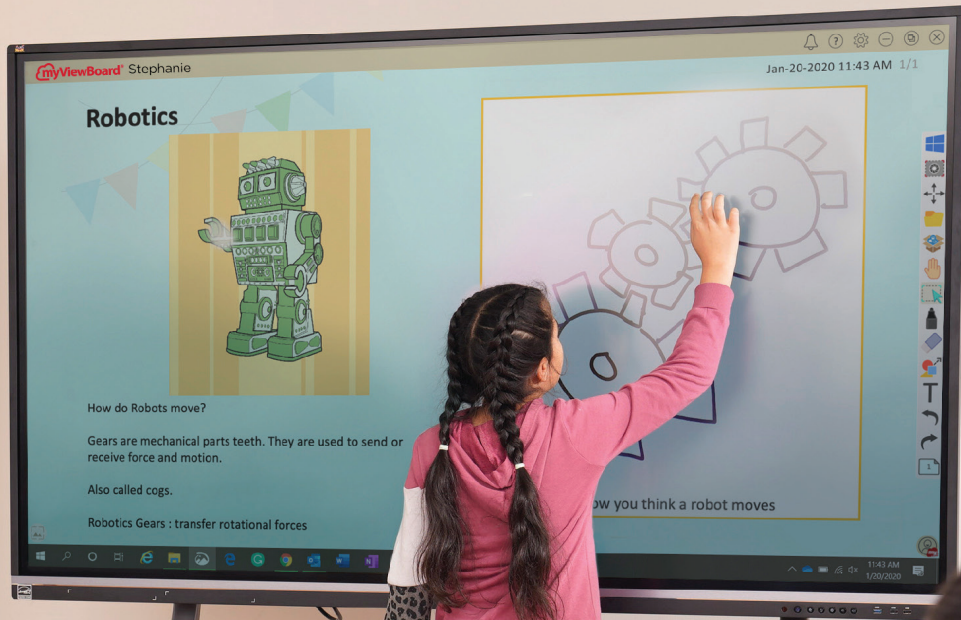
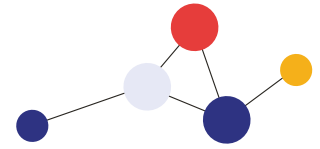


ViewSonic® | Education

ViewBoard® Interactive Displays

Newly upgraded ViewSonic® IFP50 Series



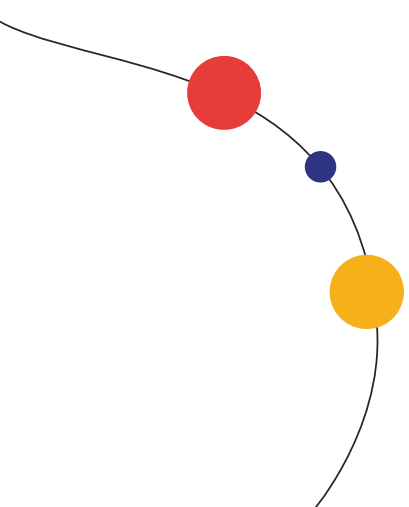


Limitless Collaboration and Endless Creativity


Connect. Collaborate. Create.

Designed to help classrooms connect, collaborate and create, the newly upgraded IFP50 series of interactive displays delivers exactly what you need to drive engagement, energize and motivate students, and make teaching more fun.

Featuring state-of-the-art touch display technology, ViewBoard interactive displays deliver an ultra-smooth, natural handwriting experience. With stunning 4K resolution, upgradeable slot-in PC options, and secure myViewBoard® software, these interactive displays offer a customizable, secure, and future-proof whiteboarding solution for any classroom or huddle space.



ViewSonic myViewboard® software is a powerful tool that enables teachers to build dynamic lesson plans, import engaging content, and improve learning outcomes.

Whether yours is a Windows, Android, Mac or Chrome environment, myViewBoard works well with existing technology and seamlessly integrates into nearly any classroom. 



- **myViewBoard:** A digital whiteboard designed to run on all operating systems. It's ideal for use on large touchscreen displays, but will also run on non-interactive screens such as a laptop screen, where mouse clicks replace touch for interaction.

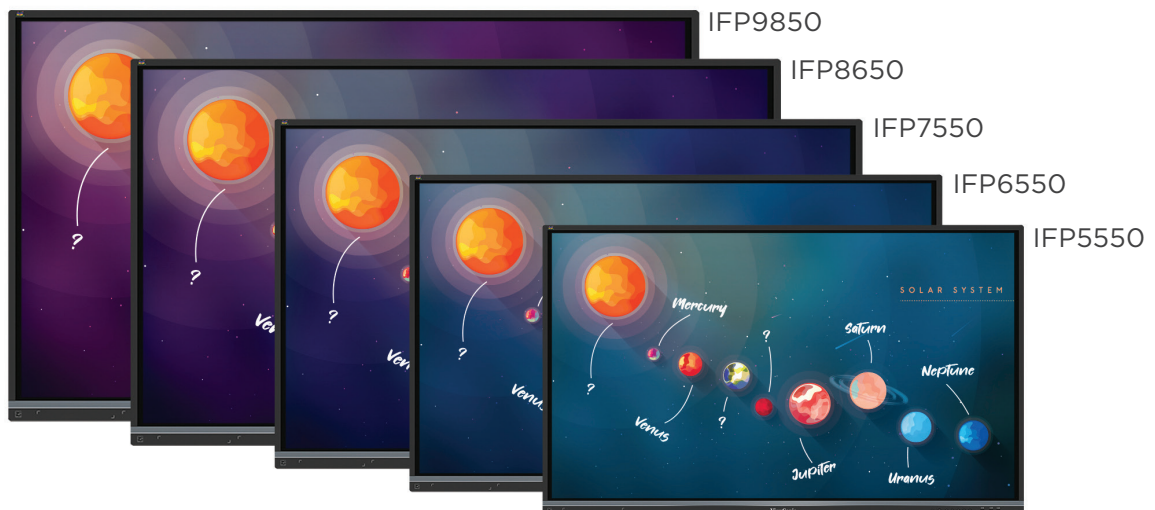


Manager

- **Manager:** The included ViewSonic Manager™ software enables IT admin to securely setup, manage and maintain all of your school's digital displays from a centralized dashboard.



- **Originals:** ViewSonic Originals™ contains a variety of ready-made content such as themed activities, games and video-assisted learning lessons that you can incorporate into your classes.



ViewBoard Cast enables content streaming from any device onto a ViewSonic display over wireless or cable networks.



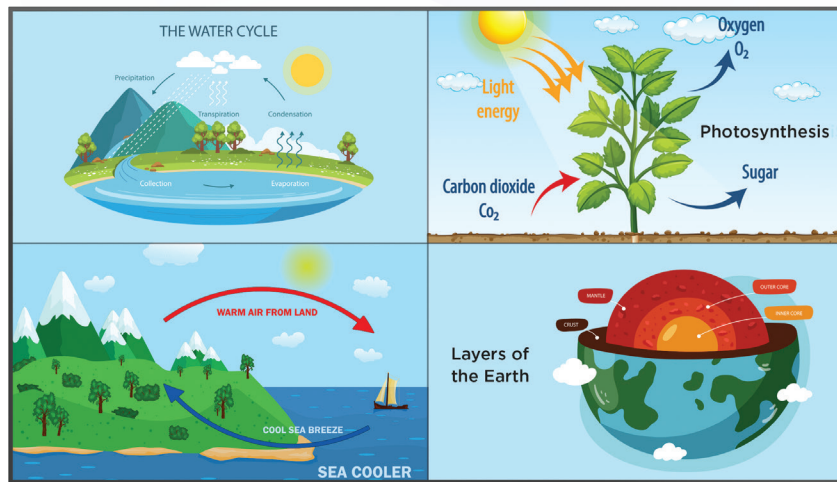
- **Wirelessly share content from any device:** Stream content from Windows, Mac, iOS, Android, and Chromecast devices onto a ViewSonic display. Instant streaming means no valuable meeting time or class time is wasted.



- **Multi-screen sharing:** Up to four users can simultaneously annotate content (such as documents, cloud files, multimedia, etc.) on their devices in real time. That content can then be streamed and shared onto the ViewBoard display via four split screens.

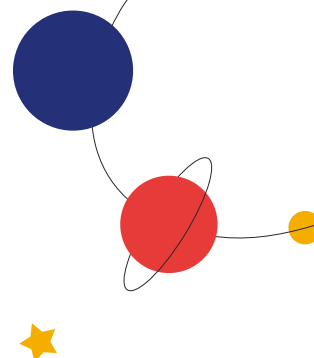


- **Remote touch control:** A host can remotely access and control a presenter's Windows or Mac device via touch control on the ViewBoard display. Touch annotations on the ViewBoard display will then appear on the controlled device.





**Drive Engagement, Energize
and Motivate Students**



ViewBoard Specifications

Model		IFP5550	IFP6550	IFP7550	IFP8650	IFP9850
Display	Panel Size	55"	65"	75"	86"	98"
	Type/Tech	TFT LCD Module with DLED Backlight, IPS				
	Display Area (mm)	1209.6(H) x 680.4 (V) (54.64" Diagonal)	1428.48(H) x 803.52(V) (64.5" Diagonal)	1650.24(H) x 928.26(V) (74.5" Diagonal)	1913.0(H) x 1084.0 (V) (85.6" Diagonal)	2171.85(H) x 1232.35(V) (97.52" Diagonal)
	Aspect Ratio	16:9				
	Native Resolution	UHD 3840x2160 (Pixels)				
	Colors	1.07B Colors (8 Bit+FRC)				1.07B Colors (10 Bit)
	Brightness	350 Nits (Typ.)				
	Contrast Ratio	1200:1 Typ., 5000:1 Max. (DCR Enabled)				
	Response Time	8ms				6ms
	Viewing Angles	H = 178, V = 178 (Typ.)				
	Backlight Life	50,000 Hours				
	Surface Treatment	Hardness: 7H Mohs Scale/ 9H Pencil Hardness, Anti-Glare Coating				
Haze	25%				28%	
Orientation	Landscape					
Platform	Processor	Quad core ARM Cortex-A73+Quad core ARM Cortex-A53				ARM Cortex A73*4 (1.8GHz)
	RAM	4GB DDR4				
	Storage	32GB				
Touch	Type/Tech	IR Recognition				
	Touch Resolution	32767 x 32767				
	Touch Point	Windows: 40 Android: 20				20
	Response Time	≤10ms				
Input	Pen Tips Size	2.5mm/8mm				
	HDMI-In	x3				
	RGB/VGA	N/A				x1
	Audio	N/A				x1
	RS232					
	OPS	x1				
HDMI-Out						
Audio		x1				x1 (Earphone Out)
SPDIF		x1				
RS232		N/A				x1
LAN	RJ45	x2 (1 In and 1 Out) (10/100/1000M) (USB Type-C 10/100, Android & PC 10/100/1000)				9850: x1
USB	Type-A	6				5
	Type-B	2				
	Type-C	1				
Speakers		12W x 2 + 16W x 1				16Wx2
Embedded OS		ViewBoard OS				
Bundle Software	Basic Annotation Software	Whiteboard				
	Wireless Casting	ViewBoard Cast + Display				
	Remote Device Management	Manager				
Special Features	Smart USB Ports	Yes				
	Windows Ink	Yes				
	Light Sensor	Yes				
Power	Voltage	100-240VAC +/- 10% Wide Range				
	Consumption	On: 89W; Off: <0.5W	On: 95W; Off: <0.5W	On: 135W; Off: <0.5W	On: 175W; Off: <0.5W	192.5(Typ.) < 0.5 W ("Off")
Wall Mount (VESA*)		400 x 200	600 x 400	800 x 400	800 x 600	800 x 600
Operating Conditions	Temperature (°C)	0°C to 40°C				
	Humidity	10% - 90% RH Non-Condensing				
Dimensions (W x H x D)	Physical (Inch/mm)	49.9 x 30.4 x 3.3 in/ 1268 x 773 x 85 mm	58.6 x 35.3 x 3.5 in/ 1488 x 897 x 90 mm	67.3 x 40.2 x 3.5 in/ 1710 x 1020 x 90 mm	77.1 x 45.7 x 3.5 in/ 1958 x 1160 x 90 mm	88.4 x 52.1 x 3.6 in/ 2245 x 1323 x 91 mm
	Packaging (Inch/mm)	56.2 x 34.6 x 8.7 in/ 1428 x 878 x 220 mm	65.7 x 39.8 x 8.8 in/ 1669 x 1010 x 223 mm	76.0 x 44.9 x 11.0 in/ 1930 x 1140 x 280 mm	83.6 x 53.0 x 11.0 in/ 2123 x 1345 x 280 mm	97.8 x 58.8 x 14.8 in/ 2483 x 1493 x 376 mm
Weight	Net (lb/kg)	58.2 lb/26.4 kg	89.3 lb/40.5 kg	118.8 lb/53.9 kg	150.8 lb/68.4 kg	228.4 lb/103.6 kg
	Gross (lb/kg)	78.3 lb/35.5 kg	109.6 lb/49.7 kg	158.5 lb/71.9 kg	200 lb/90.7 kg	293.7 lb/133.2 kg
Regulations		VSA:US NRTL w/ CA,FCC,DOE Energy Star,DOE EPEAT	VSA:US NRTL w/ CA, FCC-B w, FCC,DOE Energy Star, DOE EPEAT	VSA:US NRTL w/ CA, FCC-B w, FCC,DOE Energy Star, DOE EPEAT	VSA:US NRTL w/ CA, FCC-B w, DOE Energy Star, DOE EPEAT	VSA:US NRTL w/ CA,FCC, DOE Energy Star,CEC
Low Blue Light (LBL Certificate)		Yes				
Energy Star Version		ES8.0				
Package Contents	1. 3m Power Cord by Ship Area	1. 3m Power Cord by Ship Area	1. 3m Power Cord by Ship Area	1. 3m Power Cord by Ship Area	1. 3m Power Cord by Ship Area	1. 3m Power Cord by Ship Area
	2. Remote Control with AAA Battery	2. Remote Control with AAA Battery	2. Remote Control with AAA Battery	2. Remote Control with AAA Battery	2. Remote Control with AAA Battery	2. Remote Control with AAA Battery
	3. USB touch screen cable	3. USB touch screen cable	3. USB touch screen cable	3. USB touch screen cable	3. USB touch screen cable	3. USB touch screen cable
	4. Touch Pen x2 (VB-PEN-009)	4. Touch Pen x2 (VB-PEN-009)	4. Touch Pen x2 (VB-PEN-009)	4. Touch Pen x2 (VB-PEN-009)	4. Touch Pen x2 (VB-PEN-009)	4. Touch Pen x2 (VB-PEN-009)
	5. Quick Start Guide + Compliance statement	5. Quick Start Guide + Compliance Statement	5. Quick Start Guide + Compliance Statement	5. Quick Start Guide + Compliance Statement	5. Quick Start Guide + Compliance Statement	5. Quick Start Guide + Compliance Statement
	6. RS232 Adapter	6. RS232 Adapter	6. RS232 Adapter	6. RS232 Adapter	6. RS232 Adapter	6. RS232 Adapter
	7. Clamp x5	7. Clamp x5	7. Clamp x5	7. Clamp x5	7. Clamp x5	7. Clamp x5
	8. Camera Plate	8. Camera Plate	8. Camera Plate	8. Camera Plate	8. Camera Plate	8. Camera Plate
	9. Screw x8 (Camera 2+2, Wall Mount x4)	9. Screw x8 (Camera 2+2, Wall Mount x4)	9. Screw x8 (Camera 2+2, Wall Mount x4)	9. Screw x8 (Camera 2+2, Wall Mount x4)	9. Screw x8 (Camera 2+2, Wall Mount x4)	9. Screw x8 (Camera 2+2, Wall Mount x4)
	10. HDMI Cable 3m	10. HDMI Cable 3m	10. HDMI Cable 3m	10. HDMI Cable 3m	10. HDMI Cable 3m	10. HDMI Cable 3m
11. USB Type-C Cable						
Compatible Accessories	Slot-in PC	VPC2C-W33-01, VPC2C-W33-01-1B, VPC25-W53-01-1B, VPCF5-W55-G1, VPC35-W53-G1, VPC37-W53-G1, VPC-A31-01				
	WiFi Card	VB-WIFI-001, VB-WIFI-005, VSB050				
	Camera	VB-CAM-002, VB-CAM-201, VB-VIS-002				
	Speakerphone	VB-AUD-201				
	Microphone	VB-MIC-201				
	Stylus	VB-PEN-009				
	Wall Mount	WMK-047-2, VB-WMK-003				
Wireless Presentation	VB-WPS-001, VB-WPS-003, VB-BOX-001					
Carts	VB-STND-001, VB-STND-004, VB-STND-005, VB-STND-007, VB-STND-008				VB-STND-009	

**With a few simple optional accessories,
your ViewBoard display can become the ultimate integrated solution.**

Mobile Mounting Options

VB-STND-001, VB-STND-005, VB-STND-007,
VB-STND-008, VB-STND-009

Sturdy rolling carts are certified UL and ADA compliant for safety and accessibility. Select models include motorized lift and tilt features.



Fixed Mounting Options

WMK-047-2, VB-STND-004

Easy-to-install fixed wall mounts and floor stands are certified UL and ADA compliant for safety and accessibility.



Windows® 11 and Android™ EDLA Slot-in PCs



VPC and EDLA Series

Includes upgraded processors, increased storage, Wi-Fi 6 connectivity and enhanced security



Chromebox

NMP760

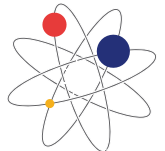
Delivers a familiar, easy-to-use Google interface for creating, saving, and sharing content



Wireless Internet Module

VB-WIFI-001, VB-WIFI-005

Delivers faster Wi-Fi and support for Bluetooth 5.2



Document Camera

VB-VIS-002

8-megapixel USB document camera with microphone



Microphones, Speakerphones and Webcams

VB-MIC-201

Omnidirectional USB expansion wired microphone



VB-AUD-201

Conference speakerphone with 360 degrees sound and four integrated microphone arrays



VB-CAM-002

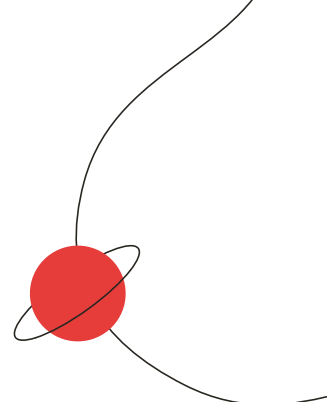
1080p USB camera with built-in camera and privacy lens



VB-CAM-201

4K UHD Ultra-wide camera with speaker and four-microphone array with noise and echo cancellation





For more information contact your ViewSonic representative today.

ViewSonic Sales: (909) 444-8964 or salesinfo@viewsonic.com

Microsoft and the Microsoft logo are trademarks or registered trademarks of the Microsoft group of companies in the United States and/or other countries. The Android™ robot logo is a trademark of Google Inc. and is in no way affiliated with ViewSonic.

Program, pricing, specifications and availability are subject to change without notice. Corporate names and trademarks stated herein are the property of their respective companies. Copyright © 2024, ViewSonic Corporation. All rights reserved. [23VWB-EDU121]



ViewSonic®

Education