

Healthcare Solutions

A Clearer View for Patient Care

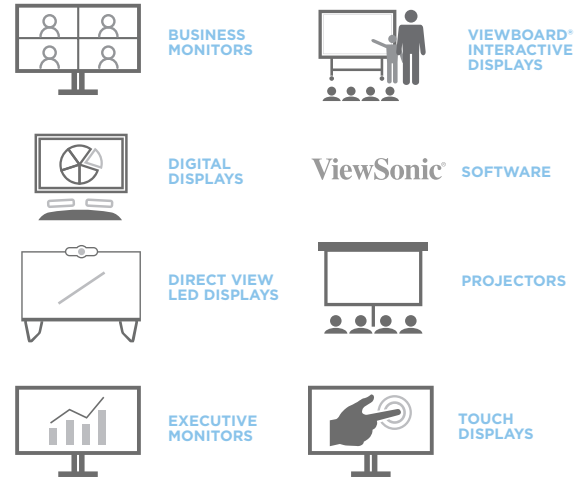


LOOKBOOK

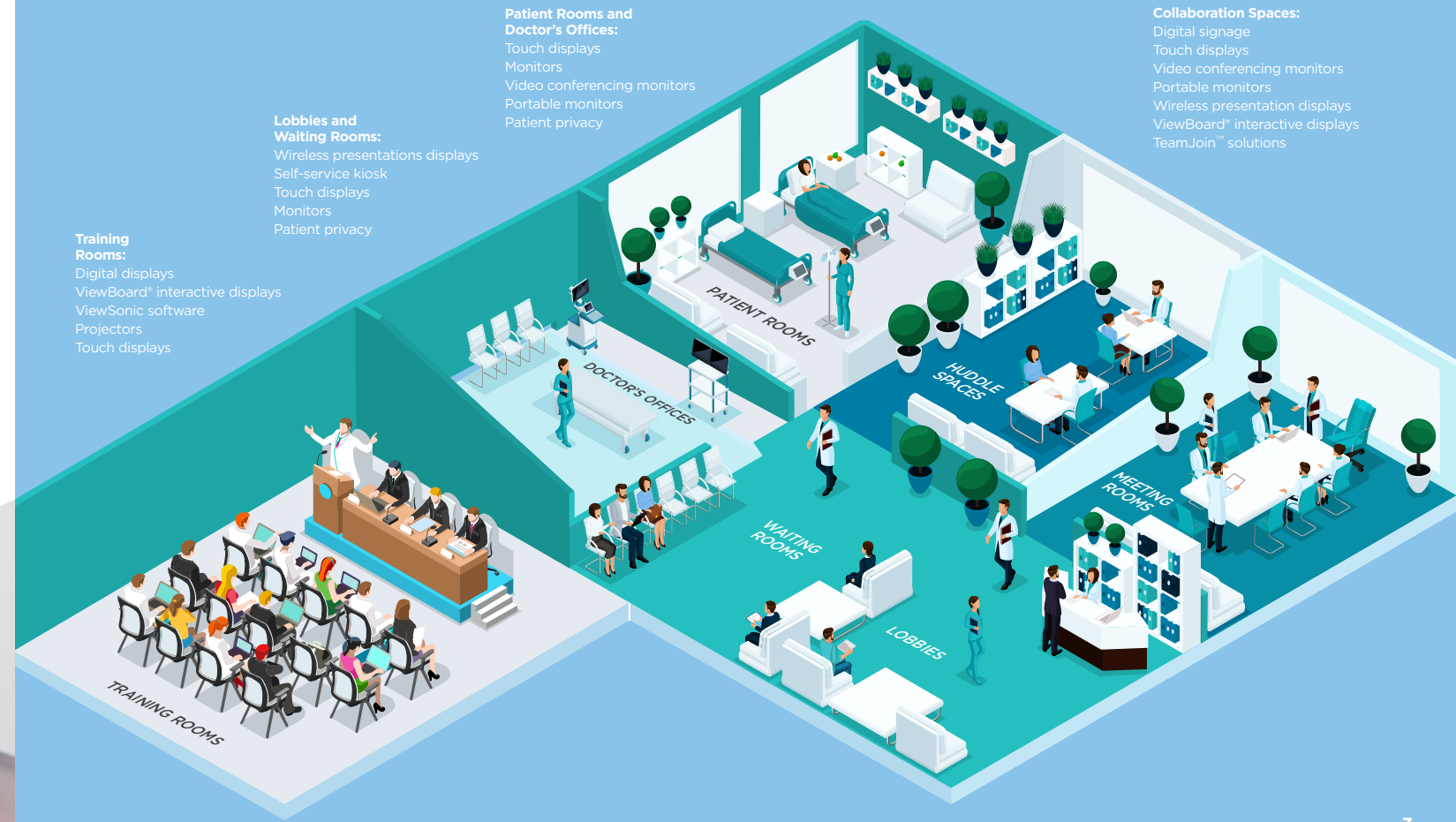
Clear, concise and compliant communication is vital for healthcare facilities.

From patient rooms to nurse's stations and doctor's offices, sharing the right messages at the right time is important to delivering the highest level of care.

ViewSonic offers a variety of visual solutions to securely, efficiently and effectively relay critical information to your team and your patients.



TeamJoin MICROSOFT TEAMS ROOMS



Check-In Stations

Our touch displays support administrative and clinical staff workflow, which helps reduce wait times and delivers a better overall experience for patients.



- On-demand interactive messaging with 10-point multi-touch capability
- Scratch-resistant surfaces deliver durable, consistent, high-quality viewing experience
- Convenient media player cradle on select models can accommodate a PC or media player, while a lockable door keeps things secure and out of sight.
- Versatile connectivity includes USB-C, DisplayPort, HDMI, and VGA inputs on select models
- Dual integrated speakers on selected models
- Integrated RJ45 connection on select models allows for remote set up and management

IDEAL FOR:

- **Reception areas**
- **Lobbies**

AVAILABLE MODELS:

- TD series
- EP1052T series
- EP2410T-B1
- EP5542T
- VSD243



Administrative Workstations

Clear and clutter-free monitor solutions keep staff productive and comfortable for a continuous workflow ideal for highly productive environments.

- Advanced ergonomics include up to 40° tilt
- Eco-friendly packaging to reduce environmental footprint
- Dual head-only options to reduce TCO and simplify deployment
- Ease of deployment with quick release stand design
- Future-proof connectivity options include USB-C



IDEAL FOR:

- **Reception areas**
- **Lobbies**
- **Pharmacies**
- **Waiting rooms**
- **Nurse's stations**

AVAILABLE MODELS:

- VG series
- VX series
- VA series



Self-Service Kiosks

Help guests navigate their way around your facility with our line of intuitive and easy-to-use digital kiosks and ePosters perfect for use as directories and campus maps.

- Built-in multi-core media player with ample storage
- Photo and video playback using the embedded media player and internal memory
- A convenient media player cradle can accommodate a PC or an additional mounted media player, while a lockable door keeps things secure and out of sight.
- Health Flex Kiosks feature a hand sanitizer dispenser holder
- Interactive touchscreen options



IDEAL FOR:

- **Hospital entrances**
- **Lobbies**
- **Hallways**
- **Waiting rooms**

AVAILABLE MODELS:

- EP1052T-L/A/H
- EP2410-B1
- EP2410T-B1
- EP2710-B1
- EP5542
- EP5542T
- VSD243



Digital Signage

Broadcast waiting room messaging, push emergency protocols, and communicate service offerings more efficiently and effectively.



- Full HD and 4K Ultra HD resolutions
- Built-in multi-core media player with ample storage
- Versatile connectivity includes HDMI, USB, LAN, WIFI and USB-C on selected models
- Manager Advanced™ software features a Multimedia Broadcast function for simple digital signage
- Optional ViewSonic Signage Manager CMS (SW-216) enables local content push from PCs and laptops to the connected display
- 24/7 reliability on select models, high brightness and Picture-in-Picture (PIP) and Picture-by-Picture (PBP) options
- Up to 5-year limited warranty with on-site service*
- Select displays feature a DICOM simulation mode that can show the accurate grayscale image representation required for medical imaging

IDEAL FOR:

- **Hospital entrances**
- **Lobbies**
- **Hallways**
- **Waiting rooms**
- **Patient rooms**

AVAILABLE MODELS:

- CDE30 4K series
- CDE12 4K series
- All-In-One Direct View LED series



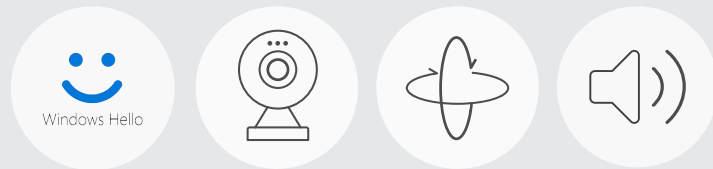
Telehealth

Our videoconferencing monitors feature a built-in webcam.

- Integrated webcam, microphone and speakers ideal for virtual meetings
- Camera features +/- 5-degree tilt for easy adjustability, while a physical shutter pop-up feature ensures privacy
- Windows Hello-certified models include IR integrated camera for convenient facial recognition and a safe, password-free, single user sign-on
- Full ergonomic stand for comfort and productivity
- Future-proof connectivity options

We also offer standalone webcam that can be easily connected to your existing monitors.

- VB-CAM-002 1080p USB camera with privacy lens cover and stereo microphone



IDEAL FOR:

- **Doctor's offices**
- **Nurse's stations**

AVAILABLE MODELS:

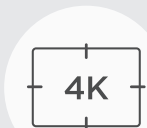
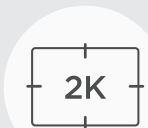
- VG2457V
- VG2757V-2k
- VG2440V



High-Performance Workspaces

Clear and clutter-free monitor solutions enable an optimal and productive environment for clinicians.

- Select displays feature a DICOM simulation mode that can show the accurate grayscale image representation for medical imaging
- Resolutions ranging from Full HD, 2K Quad HD, and 4K Ultra HD
- Options for flat and curved screens
- VESA-compatible mounts
- Cable management design for clutter reduction, minimized clutter
- Cable management design for clutter-free workspaces



IDEAL FOR:

- **Doctor's offices**
- **Collaboration spaces**
- **Mobile carts**
- **Patient rooms**

AVAILABLE MODELS:

- VG series
- VP series
- VA series



Monitors for Mobile Carts

Our head-only monitor packs include two monitors without monitor stands, making them perfect for use on medical carts. We also have monitors with built-in privacy screens that keep on-screen information safe from prying eyes.

- VESA-compatible designs make for easy installation on mobile carts
- Options for dual, head-only monitors and monitors with built-in privacy screens
- Touch display options allow for faster, more intuitive interactions with the system
- Select touch displays work with multiple glove types including latex, rubber, polyester or touchscreen-compatible cotton gloves



IDEAL FOR:

- **Patient rooms**
- **Nurse's stations**

AVAILABLE MODELS:

- VG series
- TD series



Patient Privacy

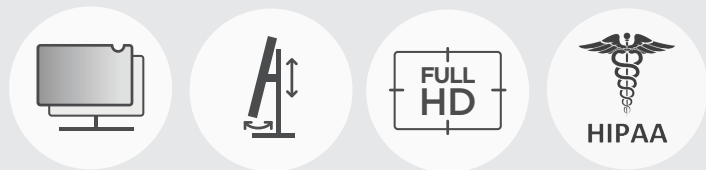
Our HIPAA-compliant privacy monitors feature built-in, tamper-proof privacy filters that limit visibility when the screen is viewed from the side beginning at 30-degrees. This helps provide constant safeguarding of patient information. For existing desktop displays, we also offer add-on privacy filters ranging from 12.5" to ultra-wide 34" form factors.

VG2448-PF monitor:

- Built-in privacy filter cannot be removed by users
- No tape needed
- No software needed

Privacy filter accessories:

- Wide range of sizes
- Easy to install on existing monitors



IDEAL FOR:

- **Nurse's stations**
- **Reception areas**
- **Patient rooms**

AVAILABLE MODELS:

- VG2448-PF
- VSPF available in sizes 12.5" up to 34"



ViewBoard® Interactive Displays

Interactive 4K touchscreens allow team members to write, annotate and draw on medical images, charts and more.

- Responsive touchscreen ideal for notetaking and brainstorming
- Integrated screen casting encourages content sharing
- Cloud-based files can be accessed, retrieved, and saved wherever you go
- IFPG1 series features OS-less design for enhanced security



IDEAL FOR:

- **Conference and meeting rooms**
- **Collaboration spaces**

AVAILABLE MODELS:

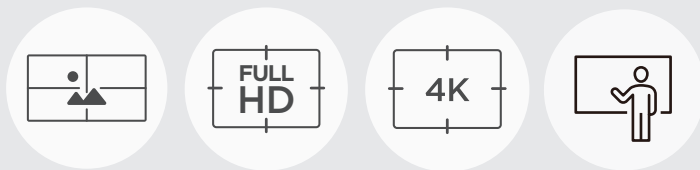
- ViewBoard IFP50 series
- ViewBoard IFP52 series
- ViewBoard IFP62 series
- ViewBoard IFPUW series
- ViewBoard IFPG1 series



Collaboration Displays

Available in variety of screen sizes that are an ideal fit in conference rooms, training labs, auditoriums and more, ViewSonic collaboration displays transform meeting rooms into smart and connected spaces where doctors and staff can collaborate more efficiently.

- Select displays feature a DICOM simulation mode that can show the accurate grayscale image representation required for medical imaging
- Resolutions ranging from Full HD to 4K Ultra HD
- Built-in multi-core media player with ample storage
- Embedded LAN, web browser, and optional Wi-Fi
- FREE ViewBoard Cast™ content sharing software enables streaming from virtually any device
- Manager Advanced™ software features a Multimedia Broadcast function for simple digital signage
- Optional Signage Manager CMS (SW-216) enables local content push from PCs and laptops to the connected display
- 3-year limited warranty with on-site service*



IDEAL FOR:

- **Conference and meeting rooms**
- **Collaboration spaces**

AVAILABLE MODELS:

- All-In-One Direct View LED series
- LDS135-151
- LDS135-153
- CDE12 4K series
- CDE30 4K series
- TeamJoin™ TRS10 and TRS10-UB for Microsoft Teams Rooms





**For more information
contact your ViewSonic representative today.**

viewsonic.com | (888) 881-8781
salesinfo@viewsonic.com

Connect With Us

twitter.com/viewsonic
facebook.com/viewsoniccorp
instagram.com/viewsoniccorp

* Product warranty subject to ViewSonic's standard limited warranty and on-site service terms and conditions. ViewSonic products are not considered medical devices and are not intended for use in the diagnosis of disease or other conditions, or in the cure, mitigation, treatment, or prevention of disease. ViewSonic Products may include software and services owned by third party companies. ViewSonic assumes no liability for the performance, availability and use of these third-party software and services. All agreements or warranties, if any, shall be governed by the third-party software EULA. Pricing, specifications and availability are subject to change without notice. Corporate names and trademarks stated herein are the property of their respective companies. Copyright © 2024 ViewSonic Corporation. All rights reserved. 5/24 [23ALL-ENT1288_rev1]



ViewSonic®
Enterprise