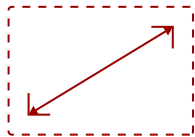


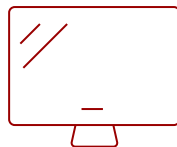
LS560WH - 3,000 ANSI LUMENS WXGA LED BUSINESS/EDUCATION PROJECTOR

Key Features

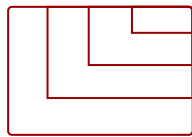
- Bright 3000 Lumens WXGA LED projector with 0.49 short throw lens and advanced visual features
- Latest LED technology provides an extended lifespan of up to 30,000 hours
- 1.1x optical zoom, 4 corner adjustment, 40-degree H/V keystone and 360 degree projection
- This projector can be configured to automatically turn on and off
- Schedule, and manage the projector remotely with Crestron, AMX, Extron, PJ Link, ATEN, and ViewSonic's vController
- Supports most media players, PCs, Macs, and mobile devices with inputs such as HDMI, USB, Ethernet LAN



30 - 300 in. / 0.76 - 7.62 m
DISPLAY



PANEL



VGA(640 x 480) to FullHD(1920 x 1080)
RESOLUTION



Product Description

The ViewSonic LS560WH short throw projector is ideal for both education and enterprise environments. Powered by lamp-free LED technology, this high-brightness projector can produce 3,000 ANSI lumens so that images and presentations can be easily viewed in environments with strong ambient light. Treat your audience to spellbinding presentations with vivid colors thanks to a wide color gamut. An eco-friendly, lamp-free design reduces maintenance and dramatically lowers your total cost of ownership, while a 0.49 short throw lens can create a 100" screen from just 3.6 ft. away. Enjoy convenient features like instant power on/off, image correction, flexible setup and so much more. This projector comes equipped with comprehensive LAN control for compatibility with Crestron, AMX, Extron, PJ Link, ATEN and ViewSonic® vController systems.

Specifications

UPC	766907018127
Light Source	DLP LED
Display Resolution	WXGA (1280x800)
Display Resolution	1280 x 800
Brightness (Lumens)	3,000 LED (2,000 ANSI)
Screen Size	30 - 300 in. / 0.76 - 7.62 m
Throw Distance	0.63m-1.58m (87"@0.92m)
Throw Ratio	0.49
Keystone	Vertical (+/- 40º) / Horizontal (+/- 40º)
Lens	Fixed Zoom
Light Source (watt)	RGB LED
Light Source Life, Normal (hours)	30000
Color Depth	1.07 Billion Colors
Dynamic Contrast Ratio	3,000,000:1
Aspect Ratio	16:10
Input Lag	37ms
Frequency Horizontal	15K~102KHz
Frequency Vertical	23-120Hz
PC Resolution (max)	VGA(640 x 480) to FullHD(1920 x 1080)
Mac® Resolution (max)	480i, 480p, 576i, 576p, 720p, 1080i, 1080p
USB 2.0 Type A	1
Ethernet LAN (RJ45)	1
3.5mm Audio Out	1
3.5mm Audio In	1
Control (RS232)	1
HDMI 1.4 (with HDCP 1.4)	1
Internal Speakers	2W (x1)
Voltage	100-120V+/- 10%, 50/60Hz
Consumption (typical)	229W
Stand-by	<0.5W
Physical Controls	Keypad, Power key
On Screen Display	Display, Image, Power Management, Basic, Advanced, System, Information (See user guide for full OSD functionality)
Temperature	32-104º F (0 - 40º C)
Kensington Lock Slot	1
Net (lbs)	6.2

Gross (lbs)	8.3
Net (kg)	2.85
Gross (kg)	3.95
Packaging (in.)	11.5 x 8.7 x 4.5
Physical (in.)	15.2 x 11.8 x 7.4
Packaging (mm)	293 x 221 x 115
Physical (mm)	365 x 300 x 188
Regulations	cTUVus
Package Contents	Projector, power cable, remote control, Quick Start Guide
Warranty	Three-year limited warranty on parts and labor, 1-year limited warranty on the light source, 1st year free Express Exchange® service. (One year Express Exchange Service requires product registration).
Recycle/Disposal	Please dispose of in accordance with local, state or federal laws.

UPC: 766907018127



Contact Sales
ViewSonic.com
 888.881.8781
 email:
salesinfo@viewsonic.com