

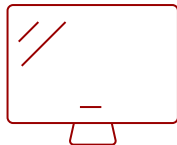
LDP216-121 - 216" ALL-IN-ONE PREMIUM 4K ULTRA HD DIRECT VIEW LED DISPLAY

Key Features

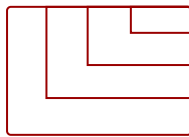
- Seamlessly Immersive
- Versatile Installation Orientation
- Super-Sized Video Walls
- Amazing Visuals
- Theater-Level Audio
- Enhanced Durability and Reliability
- Simple and Easy Setup
- Peace of Mind
- Device Management Made Easy
- Wireless Content Sharing
- Easy Maintenance



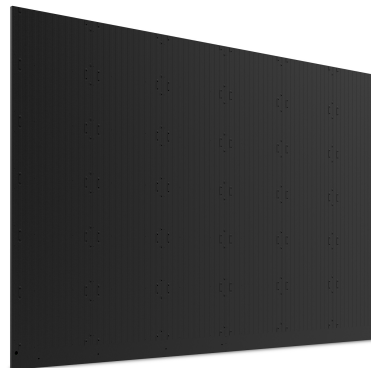
216
DISPLAY



Fine Pixel Pitch LED
PANEL



3840x2160
RESOLUTION



Product Description

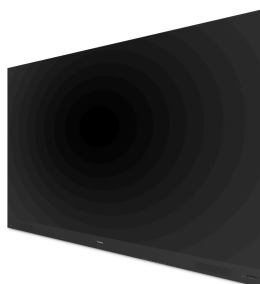
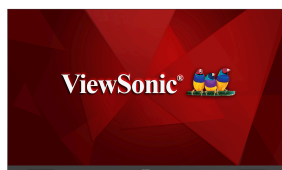
The ViewSonic® LDP216-121 All-in-One Direct View LED Display is a premium 216" larger-than-life digital screen that delivers an incredible audio-visual experience for any high-end corporate lobby, boardroom or conference room. Featuring a 120% Rec. 709 wide color gamut, lightning-fast 4,440Hz refresh rate, and a peak brightness of 600 nits, this display delivers true-to-life color and extraordinary detail for every video, presentation and lecture. The display is also equipped with Harman Kardon speakers, 4K/HDR/HLG support and PIP/PBP display modes for immersive content delivery. At 25mm slim and lined with a 5mm frameless edge, the sleek LDP216-121 exudes sophistication and elegance in any modern setting.

Specifications

UPC	766907015003
Display Type	Direct View LED
Screen Size	216
Viewable Area (in.)	216
Orientation	Landscape / Portrait
Light Source	Fine Pixel Pitch LED
LED Pitch Size (mm)	1.25
LED Grayscale	Up to 14 bits
Display Resolution	3840 x 2160
Refresh Rate	3,840Hz
Panel Type	Fine Pixel Pitch LED
Aspect Ratio	16:9
Static Contrast Ratio	20,000:1 (Typical)
Backlight Life (Hours)	100,000
Brightness	500 cd/m2
Viewing Angles	170° horizontal, 170° vertical
Wifi	2.4G / 5G n
OS	Android 9.0
Media Player Type	Yes
CPU	MTK9669
Memory	4GB DDR4
Storage	64GB (56GB available)
Internal Speakers	20W (x2)
PC Resolution (max)	3840x2160
Mac® Resolution (max)	3840x2160
HDMI 1.4 In	2
HDMI 2.0 In	3
HDMI 2.1 In	1
HDMI 2.0 Out	2
3.5mm Audio In	1
3.5mm Audio Out	1
USB 2.0	3
USB Type C	1
RS232	1
Ethernet LAN (RJ45)	1
IR in	1

Intel® OPS Slot In (80-pin)	1
Voltage	100-120V/30A~ 50/60Hz or 220-240V/15A~ 50Hz(vary by country)
Consumption (max)	4900W
Consumption (typical)	3430W
Stand-by	<0.5W
On Screen Display	Yes
Remote Control	Yes
Temperature	32-104° F (0 - 40° C)
Humidity (non-condensing)	20-80%
Net (lbs)	925.9
Gross (lbs)	1168.5
Net (kg)	420
Gross (kg)	530
Packaging (in.)	109.5 x 33.5 x 50.4
Physical (in.)	189.3 x 111 x 1.4
Physical with Wall Mount (in.)	189.8 x 111 x 3
Packaging (mm)	2780 x 850 x 1280
Physical (mm)	4810 x 2820.3 x 35
Physical with Wall Mount (mm)	4810 x 2820.3 x 77
Warranty	3-year limited warranty on parts and labor, on-site service
Recycle/Disposal	Please dispose of in accordance with local, state or federal laws.
Package Contents	Power Cord x 2, Remote Control x1, QSG x 1, Maintenance Tool (LD-MK-002) x 1, LAN Cable (Cat 5A) x 1, IR Extender Cable x 1, Spart Modules (42), WALL Mount x 1
Regulations	cTUVus, FCC, RoHS

UPC: 766907015003



Contact Sales

ViewSonic.com

888.881.8781

email:

salesinfo@viewsonic.com