

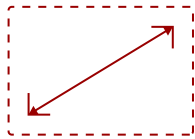


CDE8620-W1 - 86" DISPLAY, 3840 X 2160 RESOLUTION, 450 CD/M2 BRIGHTNESS

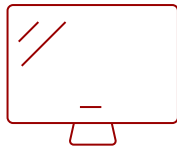
## Key Features

---

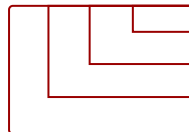
- Ultra HD Resolution
- Powerful Embedded SOC Platform
- All-in-One Solution
- VIEWBOARD® CAST CONTENT SHARING SOFTWARE
- Remote Content Sharing from Anywhere
- myViewBoard Manager



86  
DISPLAY



IPS-Type  
PANEL



RESOLUTION



## Product Description

---

The ViewSonic® CDE8620-W is a 86" premium 4K large format presentation display. With features including a razor-sharp resolution of 3840 x 2160, 450-nit high brightness, 178-degree ultra-wide viewing angles, 2 x 16W speakers, and wireless screen sharing, the CDE8620-W transforms meeting rooms into a dynamic communications hub. The built-in ViewBoard® screen sharing software\*, ViewBoard® Cast (along with the optional ViewSonic® vCastSender app) and myViewBoard Display software, enables both on-site and online users to participate in conferences and simultaneously share content. Equipped with twin dual-core processors, 3GB RAM, and 16GB of internal memory, the CDE8620-W can play multimedia from internal storage or a USB flash drive. And with remote configuration and content management system support, the ViewSonic® CDE8620-W is also suitable for a wide array of diverse signage applications. Bundle includes display and USB Wi-Fi adapter. \*Chrome, Android, Windows, Mac OS, and iOS compliant

# Specifications

More Information	
Display Type	LCD
Screen Size	86
Viewable Area (in.)	86
Orientation	Landscape
Colors	1.07B
Color Space Support	8 bit+FRC
Light Source	DLED
Display Resolution	3840 x 2160
Panel Type	IPS-Type
Aspect Ratio	16:9
Static Contrast Ratio	1,200:1
Backlight Life (Hours)	50,000
Brightness	450 cd/m2
Response Time (Typical GTG)	8ms
Viewing Angles	178° horizontal, 178° vertical
Panel Surface	Anti-Glare type, Hard-coating (3H), Haze 25%
OS	Android 8.0
Media Player Type	Media Player
GPU	G51MP2
CPU	Dual CPU - Cortex A73 + A5
CPU Processor Speed	Quad-core, 1.4GHz
Memory	3GB DDR4
Storage	16GB eMMC
Internal Speakers	16W (x2)
HDMI 2.0 (with HDCP 2.2)	2
DVI-D	1
VGA	1
DisplayPort	1
RCA Audio Out	1
3.5mm Audio In	1
SPDIF Audio Out	1
SPDIF	1
USB 3.0	1

<b>USB 2.0</b>	2
<b>OPS PC Slot</b>	1
<b>RS232</b>	1
<b>Ethernet LAN (RJ45)</b>	1
<b>IR in</b>	1
<b>IR out</b>	1
<b>WIFI Module Slot</b>	1
<b>Intel® OPS Slot In (80-pin)</b>	1
<b>Voltage</b>	100-240 VAC +/- 10% Wide Range, 50-60Hz +/-3 Hz
<b>Consumption (max)</b>	450W
<b>Consumption (typical)</b>	365W
<b>Stand-by</b>	<0.5W
<b>Temperature</b>	32-104° F (0 - 40° C)
<b>Humidity (non-condensing)</b>	20-80%
<b>Net (lbs)</b>	111.1
<b>Gross (lbs)</b>	153.9
<b>Net (kg)</b>	50.4
<b>Gross (kg)</b>	69.8
<b>Packaging (in.)</b>	83.4 x 50.1 x 11.0
<b>Physical (in.)</b>	76.0 x 43.7 x 3.2
<b>Packaging (mm)</b>	2118.0 x 1271.0 x 280.0
<b>Physical (mm)</b>	1931.0 x 1109.0 x 82.0
<b>VESA Compatible</b>	600 x 400 mm
<b>Screw Size</b>	M8
<b>AV Control</b>	AMX Certified, Crestron Certified (Version 1.0), Extron Certified
<b>Recycle/Disposal</b>	Please dispose of in accordance with local, state or federal laws.
<b>Package Contents</b>	CDE8620-W, Remote control with batteries, Quick Start Guide, Power cable, HDMI Cable, Wall Mount Screws and RS232 cable
<b>Regulations</b>	cULus, FCC, Energy Star, RoHS



## Contact Sales

[ViewSonic.com](http://ViewSonic.com)

888.881.8781 ☎

email: [salesinfo@viewsonic.com](mailto:salesinfo@viewsonic.com) ✉