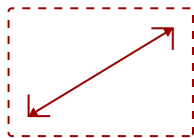


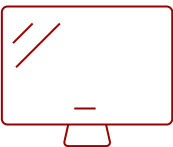
IFP6550-E4 - 65" 4K TOUCH ENABLED VIEWBOARD SMART DISPLAY WITH WIFI ADAPTER AND SLIM TROLLEY CART

Key **Features**

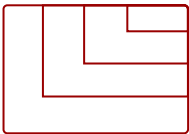
- **ULTRA HD RESOLUTION:** 65 Inch 4K Ultra HD (3840x2160p) interactive display
- **ADVANCED TOUCH:** 40-point multi-touch lets users write on the display with their fingers and stylus pens
- **INTEGRATED SOFTWARE:** The myViewBoard suite includes Whiteboard, ViewBoard Cast, and more for better engagement
- **BETTER SOUND:** Built-in 40W stereo soundbar delivers optimal sound
- **FLEXIBLE CONNECTIVITY:** Powerful quad-core processor and versatile connectivity options with 65W PD USB-C (HDMI, RJ45, and USB ports)
- **EVERYTHING TO GET STARTED:** This bundle includes the interactive display, wireless AC adapter and slim mobile cart
- **REMOTE MANAGEMENT:** Schedule updates and monitor device status with the built-in myViewBoard® Manager software
- **PEACE OF MIND:** Industry-leading 3-year standard warranty with optional extensions and robust support services



65  
DISPLAY



PANEL



RESOLUTION

Product **Description**

Ideal for education environments, this all-in-one ViewBoard Bundle includes a 65" ViewBoard IFP6550 4K interactive flat panel, a wireless AC adapter, and a VB-STND-005 slim trolley cart.

Specifications

More Information	
Screen Size	65
Viewable Area (in.)	65
Light Source	LED
Display Resolution	3840 x 2160

<b>Refresh Rate</b>	60Hz
<b>Aspect Ratio</b>	16:9
<b>Static Contrast Ratio</b>	1,200:1
<b>Dynamic Contrast Ratio</b>	5,000:1
<b>Backlight Life (Hours)</b>	50,000
<b>Brightness</b>	350 cd/m2
<b>Response Time (Typical GTG)</b>	8ms
<b>Viewing Angles</b>	178º horizontal, 178º vertical
<b>Panel Surface</b>	9H
<b>Operation Rating</b>	16/7
<b>Ethernet LAN</b>	(10/100/1000M) (Android 10/100, PC 10/100/1000)
<b>OS</b>	ViewBoard OS (embedded Android 8)
<b>GPU</b>	ARM Mali0G51
<b>CPU</b>	ARM Quad Core A73 + A53
<b>CPU Processor Speed</b>	A73: 1.1GHz, A53: 1.5GHz
<b>Memory</b>	3GB
<b>Storage</b>	32GB
<b>Internal Speakers</b>	10W (x2)
<b>Subwoofer</b>	15W (x1)
<b>HDMI 2.0 In</b>	3
<b>VGA</b>	1
<b>3.5mm Audio In</b>	1
<b>3.5mm Audio Out</b>	1
<b>SPDIF Audio Out</b>	1
<b>USB 3.0</b>	4
<b>USB 2.0</b>	3
<b>Slot-in PC Slot</b>	1
<b>USB B Touch Port</b>	2
<b>RS232</b>	1
<b>Ethernet LAN (RJ45)</b>	1
<b>WIFI Module Slot</b>	1
<b>Intel® OPS Slot In (80-pin)</b>	1
<b>Voltage</b>	100-240 VAC
<b>Consumption (max)</b>	350W
<b>Consumption (typical)</b>	104W
<b>Stand-by</b>	<0.5W

<b>On Screen Display</b>	Input, Volume, Backlight, Audio, Screen, Display, Adjust
<b>Remote Control</b>	Volume, Channel, Source, Mute, Back, Input, Menu
<b>Temperature</b>	32-104º F (0 - 40º C)
<b>Humidity (non-condensing)</b>	10-90%
<b>Touch Technology</b>	Infrared
<b>Touch Points</b>	Windows: 20, Android: 20
<b>Tip Detection</b>	Dual tips, 3mm and 8mm
<b>Net (lbs)</b>	129.0
<b>Gross (lbs)</b>	154.8
<b>Net (kg)</b>	58.5
<b>Gross (kg)</b>	70.2
<b>Packaging (in.)</b>	65.7 x 39.8 x 8.8
<b>Physical (in.)</b>	58.6 x 35.3 x 3.5
<b>Packaging (mm)</b>	1669.0 x 1010.0 x 223.0
<b>Physical (mm)</b>	1488.0 x 897.0 x 90.0
<b>VESA Compatible</b>	600 x 400 mm
<b>Warranty</b>	3-year limited warranty on parts, labor and backlight, onsite warranty
<b>Recycle/Disposal</b>	Please dispose of in accordance with local, state or federal laws.
<b>Package Contents</b>	IFP6550 display, WiFi Card, stylus pen x 2, power cable, remote control with batteries, ViewSonic Wizard CD (User Guide), Quick Start Guide
<b>Regulations</b>	cTUVus, FCC, ENERGY STAR, Mexico Energy, CE, CB, RoHS, ErP, WEEE

## Contact Sales

[ViewSonic.com](http://ViewSonic.com)

888.881.8781 ☎

email: [salesinfo@viewsonic.com](mailto:salesinfo@viewsonic.com) ✉