



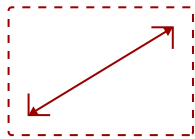
VX3268-PC-MHD - 32" OMNI CURVED 1080P 1MS 165HZ GAMING MONITOR WITH FREESYNC PREMIUM

Key Features

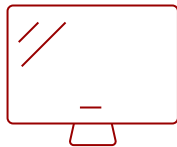
- Immersive Curved Screen Design
- 165Hz Refresh Rate
- Ultra-Fast Response Time
- AMD FreeSync™ Premium



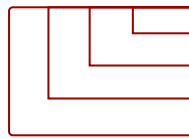
Future-proof inputs for flexible connectivity options



**32
DISPLAY**



**MVA
PANEL**



**1920 x 1080
RESOLUTION**



- VESA Mount Compatible
- 2x 2-watt Integrated speakers
- x2 HDMI 1.4
- x1 DisplayPort 1.2
- x1 Audio (Out)

Product Description

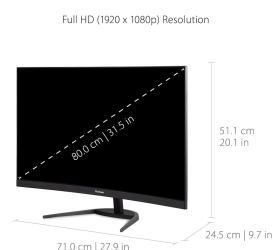
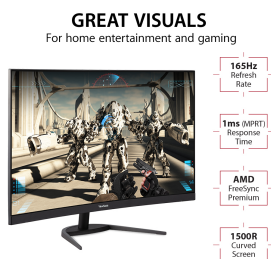
With an immersive 1500R curved screen and Full HD 1080p resolution, the ViewSonic® VX3268-PC-MHD monitor provides an incredible viewing experience for work or play. With features including a high 165Hz refresh rate, 1ms (MPRT) response time and AMD FreeSync Premium technology, this monitor virtually eliminates screen tearing and stuttering for a fluid gaming experience. The VX3268-PC-MHD also comes equipped with ViewSonic exclusive ViewMode™ presets, which offer optimized screen performance for different home entertainment applications such as watching movies, editing files, or playing video games. Two HDMI (v1.4) inputs, and one DisplayPort (v1.2) input offers flexible connectivity for both general use and entertainment.

Specifications

	More Information
UPC	766907007718
Screen Size	32
Viewable Area (in.)	31.5
Panel Type	MVA
Display Resolution	1920 x 1080
Display Resolution	Full HD (1920x1080)
Static Contrast Ratio	3,000:1
Dynamic Contrast Ratio	80,000,000:1
Light Source	LED
Brightness	250 cd/m2
Colors	16.7M
Color Space Support	8 bit (6 bit+FRC)
Aspect Ratio	16:9
Response Time (Typical GTG)	3ms
Response Time (MPRT)	1ms
Viewing Angles	178º horizontal, 178º vertical
Backlight Life (Hours)	30,000
Panel Surface	Anti-Glare type, Hard-coating (3H), Haze 25%
Curvature	1500R
Refresh Rate	165Hz
Adaptive Sync	AMD FreeSync™ Premium
PC Resolution (max)	1920 x 1080
Mac® Resolution (max)	1920 x 1080
3.5mm Audio Out	1
HDMI 1.4 In	2
DisplayPort	1
Internal Speakers	2W (x2)
Eco Mode (Conserve)	35W
Eco Mode (optimized)	40W
Consumption (typical)	44W
Consumption (max)	59W
Voltage	AC 100-240V (universal), 50-60Hz
Stand-by	0.5W

Power Supply	Internal
Cable Organization	No
Kensington Lock Slot	1
Physical Controls	Joystick key: Up, Right, Down, Left, Center; Key 1 (favorite); Key 2 (power)
On Screen Display	Input Select, Audio Adjust, ViewMode, Color Adjust, Manual Image Adjust, Setup Menu
Temperature	32-104° F (0 - 40° C)
Humidity (non-condensing)	20-90%
VESA Compatible	100 x 100 mm
Frequency Horizontal	HDMI (v1.4): 30 ~ 180 KHz, DisplayPort (v1.2): 30 ~ 200 KHz
Frequency Vertical	HDMI (v1.4): 48 ~ 144 Hz, DisplayPort (v1.2): 48 ~ 165 Hz
Digital Sync	TMDS for HDMI (v1.4), PCI-E for DisplayPort (v1.2)
Tilt (Forward/Back)	3° / 21°
Net (lbs)	14.6
Net Without Stand (lbs)	13.0
Gross (lbs)	20.1
Net (kg)	6.6
Net Without Stand (kg)	5.9
Gross (kg)	9.1
Packaging (in.)	31.5 x 20.7 x 7.3
Physical (in.)	27.9 x 20.1 x 9.7
Physical Without Stand (in.)	27.9 x 16.8 x 3.4
Packaging (mm)	800.0 x 526.0 x 186.0
Physical (mm)	710.0 x 511.0 x 245.0
Physical Without Stand (mm)	710.0 x 426.0 x 87.0
Regulations	cTUVus, FCC-B, ICES003, CEC, MX-CoC, Mexico Energy
Package Contents	VX3268-PC-MHD Display, 1 x Power Cable, 1 x HDMI Cable, 1 x Quick Start Guide
Recycle/Disposal	Please dispose of in accordance with local, state or federal laws.

UPC: 766907007718



Contact Sales
[ViewSonic.com](https://www.viewsonic.com)
888.881.8781
email:
salesinfo@viewsonic.com