

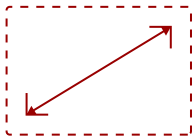
XG270 - 27" ELITE 1080P 1MS 240HZ IPS G-SYNC COMPATIBLE GAMING MONITOR

Key Features

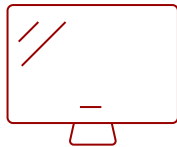
- 240Hz Refresh Rate
- Ultra-Fast Response Time
- NVIDIA G-Sync Compatible
- SuperClear IPS Panel Technology
- ELITE RGB



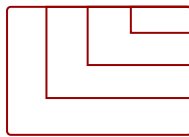
ELIMINATE CABLE DRAG
Built-In Mouse Anchor



27
DISPLAY



IPS
PANEL



1920 x 1080
RESOLUTION



Product Description

The ViewSonic® ELITE XG270 is a 27" gaming monitor that delivers incredible speed and clarity for esports enthusiasts. The IPS display's ultra-fast 1ms (GTG) response time and 240Hz refresh rate enables smooth screen transitions while offering accurate color reproduction and wide viewing angles. The panel is equipped with Full HD 1920x1080 resolution and 99% sRGB color coverage to provide stunning images during gameplay. The XG270's G-SYNC Compatible technology ensures a seamless gaming experience by reducing screen artifacts and tearing.

Specifications

More Information

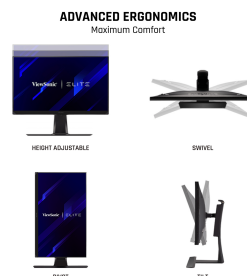
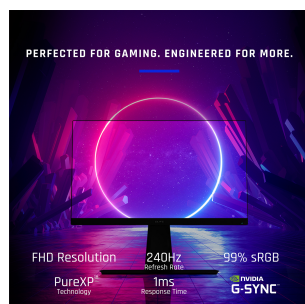
UPC

766907004779

Screen Size	27
Viewable Area (in.)	27
Panel Type	IPS
Display Resolution	1920 x 1080
Display Resolution	Full HD (1920x1080)
Static Contrast Ratio	1,000:1
Dynamic Contrast Ratio	120,000,000:1
Light Source	LED
Brightness	400 cd/m2
Colors	16.7M
Color Space Support	8 Bit (True)
Aspect Ratio	16:9
Response Time (Typical GTG)	5ms
Response Time (GTG w/OD)	1ms
Viewing Angles	178º horizontal, 178º vertical
Backlight Life (Hours)	30,000
Panel Surface	Anti-Glare type, Hard-coating (3H), Haze 25%
Refresh Rate	240Hz
Adaptive Sync	NVIDIA G-Sync
PC Resolution (max)	1920 x 1080
Mac® Resolution (max)	1920 x 1080
USB 3.1 Type A	3
USB 3.1 Type B	1
3.5mm Audio Out	1
HDMI 2.0 In	2
DisplayPort	1
Internal Speakers	3W (x2)
Eco Mode (Conserve)	71W
Eco Mode (optimized)	77W
Consumption (typical)	80W
Consumption (max)	90W
Voltage	AC 100-240V (universal), 50-60Hz
Stand-by	0.5W
Power Supply	External
Cable Organization	No
Kensington Lock Slot	1

Physical Controls	Joystick key: Up, Right, Down, Left, Center; Shortcut; Power
On Screen Display	Game Modes, Display, Input Select, ViewMode, Audio Adjust, Setup Menu
Temperature	32-104º F (0 - 40º C)
Humidity (non-condensing)	20-90%
VESA Compatible	100 x 100 mm
Frequency Horizontal	15 ~ 255 KHz
Frequency Vertical	48 ~ 240 Hz
Digital Sync	TMDS for HDMI (v2.0), PCI-E for DisplayPort (v1.2)
Height Adjust	120 mm / 4.7 in
Swivel	30º
Pivot (Right/Left)	90º / 90º
Tilt (Forward/Back)	5º / 20º
Net (lbs)	16.1
Net Without Stand (lbs)	9.8
Gross (lbs)	25.6
Net (kg)	7.9
Net Without Stand (kg)	4.5
Gross (kg)	11.6
Packaging (in.)	27.5 x 20.7 x 11.1
Physical (in.)	24.2 x 18.06~22.5 x 10.4
Physical Without Stand (in.)	24.2 x 14.6 x 2.7
Packaging (mm)	698.0 x 525.0 x 282.0
Physical (mm)	614.0 x 458.7~571.6 x 265.0
Physical Without Stand (mm)	614.0 x 370.0 x 68.0
Regulations	cTUVus or cULus, FCC-B, ICES003, CEC, MX-CoC, Mexico Energy
Package Contents	XG270 Display, 1 x Power Cable, 1 x DisplayPort Cable, 1 x USB 3.1 Cable, 1 x AC/DC Adapter, 1 x ELITE Hood, 1 x Quick Start Guide
Recycle/Disposal	Please dispose of in accordance with local, state or federal laws.

UPC: 766907004779



Contact Sales
[ViewSonic.com](https://www.viewsonic.com)
 888.881.8781
 email: salesinfo@viewsonic.com