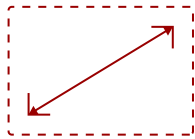


## IFP2410 - 24" TOUCH ENABLED VIEWBOARD SMART DISPLAY

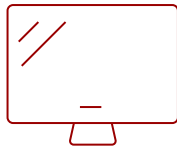
### Key Features

---

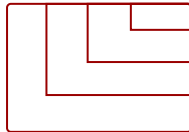
- **FULL HD RESOLUTION:** 24 Inch Full HD (1920x1080p) interactive display
- **ADVANCED TOUCH:** Multiple users may write or draw on the screen with their fingers and stylus pens
- **INTEGRATED SOFTWARE:** The myViewBoard suite includes Whiteboard, ViewBoard Cast, and more for better engagement
- **FLEXIBLE CONNECTIVITY:** Powerful quad-core processor and versatile connectivity options (HDMI, RJ45, and USB ports)
- **BUILT-IN OS:** Based on Android 8.0 and is compatible with Windows and Android devices only
- **REMOTE MANAGEMENT:** Schedule updates and monitor device status with the built-in myViewBoard® Manager software
- **PEACE OF MIND:** Industry-leading 3-year standard warranty with optional extensions and robust support services



**24  
DISPLAY**



**IPS  
PANEL**



**RESOLUTION**



### Product Description

---

The ViewSonic® IFP2410 ViewBoard® Mini is a 24" smart display that transforms podiums and lecterns into collaboration hubs for front-facing teaching. With integrated myViewBoard® digital whiteboarding software, ViewBoard Cast streaming software, and a 10-point touchscreen, the ViewBoard Mini makes content creation and sharing easier than ever before. Educators can manipulate and control content, files, images, and annotations on the ViewBoard Mini touchscreen, then share that content on a larger front-of-classroom display or projector. For dynamic lessons and interactive collaboration, multiple presenters can simultaneously draw, write, and annotate on the ViewBoard Mini as well – making it an ideal collaboration hub solution for classrooms, lecture halls, and auditoriums.

### Specifications

---

<b>UPC</b>	766907003864
<b>Screen Size</b>	24
<b>Viewable Area (in.)</b>	23.6
<b>Light Source</b>	LED
<b>Display Resolution</b>	1920 x 1080
<b>Panel Type</b>	IPS
<b>Aspect Ratio</b>	16:9
<b>Static Contrast Ratio</b>	3,000:1
<b>Brightness</b>	250 cd/m2
<b>Response Time (Typical GTG)</b>	16ms
<b>Viewing Angles</b>	178º horizontal, 178º vertical
<b>Panel Surface</b>	3H Anti-glare, hard-coating
<b>Ethernet LAN</b>	N/A
<b>Wifi</b>	802.11 b/g/n/ac (2.4GHz / 5GHz)
<b>Bluetooth</b>	Bluetooth 4.0
<b>OS</b>	8.1
<b>CPU</b>	Rockchip® RK3288W Cortex-A17 Quad-Core
<b>Memory</b>	2GB DDR3
<b>Storage</b>	16GB eMMC
<b>Built-in Software</b>	myViewBoard, Chromium browser, Zoom, ViewBoard Cast
<b>Microphone</b>	Built In, Echo cancelling
<b>Internal Speakers</b>	2.5W (x2)
<b>HDMI 1.4 In</b>	1
<b>HDMI 1.4 Out</b>	1
<b>3.5mm Audio Out</b>	1
<b>USB 2.0</b>	4
<b>USB 2.0 Type B</b>	1
<b>Ethernet LAN (RJ45)</b>	1
<b>Intel® OPS Slot In (80-pin)</b>	1
<b>Voltage</b>	100-240 VAC
<b>Consumption (max)</b>	40W
<b>Consumption (typical)</b>	16W
<b>Stand-by</b>	<2W
<b>Temperature</b>	32-95º F (0 - 35º C)
<b>Humidity (non-condensing)</b>	20-90%
<b>Touch Technology</b>	Capacitive

<b>Touch Points</b>	Windows: 1, Android: 10
<b>Net (lbs)</b>	12.4
<b>Gross (lbs)</b>	16.7
<b>Net (kg)</b>	5.6
<b>Gross (kg)</b>	7.6
<b>Packaging (in.)</b>	25.3 x 17.1 x 4.9
<b>Physical (in.)</b>	22.6 x 13.9 x 1.9
<b>Packaging (mm)</b>	643.0 x 435.0 x 140.0
<b>Physical (mm)</b>	572.9 x 351.8 x 47.0
<b>VESA Compatible</b>	100 x 100 mm
<b>Webcam</b>	5MP
<b>Microphone</b>	Built In, Echo cancelling
<b>Warranty</b>	Three-year limited warranty on parts, labor and backlight
<b>Recycle/Disposal</b>	Please dispose of in accordance with local, state or federal laws.
<b>Package Contents</b>	IFP2410, power adapter and cord, Quick Start Guide
<b>Regulations</b>	cTUVus, FCC-B(including ICES003), FCC-ID, CA IC

UPC: 766907003864



**Contact Sales**  
[ViewSonic.com](http://ViewSonic.com)

888.881.8781 📞  
 email:  
[salesinfo@viewsonic.com](mailto:salesinfo@viewsonic.com)