

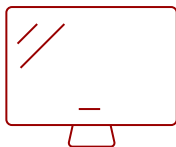
LS700HD - 1920 X 1080 RESOLUTION, 3,500 ANSI LUMENS, 1.13~1.47 THROW RATIO

Key Features

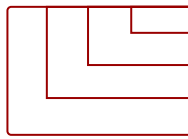
- Laser Phosphor Technology
- Full HD 1080p Resolution
- Bright Images in any Environment
- Horizontal and Vertical Keystone Correction
- Reduced Input Latency



60 - 300 in. / 1.5 - 7.6 m
DISPLAY



PANEL



1920 x 1080
RESOLUTION



Product Description

With incredible Full HD resolution and a high brightness of 3,500 lumens, the ViewSonic® LS700HD laser projector delivers stunning home entertainment: day or night, in bright rooms or dark. Utilizing the latest laser light technology that lasts up to 20,000 hours, the LS700HD delivers long-term enjoyment for movies, games, and other multimedia entertainment. What's more, with high brightness, SuperColor™ technology, and room-filling sound, this projector provides an incredibly immersive home theater experience in nearly any room or environment. Set-up is a breeze too: 1.3x optical zoom and versatile connectivity options allow for more flexible mounting and easy installation. For an amazing home theater viewing experience with lifelike color and razor-sharp details, the LS700HD delivers.

Specifications

UPC	766907981216
Light Source	DLP Laser
Display Resolution	Full HD (1920x1080)
Display Resolution	1920 x 1080
Brightness (Lumens)	3,500 ANSI
Screen Size	60 - 300 in. / 1.5 - 7.6 m
Throw Distance	4.9 - 28.8 ft / 1.5 - 8.8 m
Throw Ratio	1.13~1.47
Keystone	Vertical (+/- 40°) / Horizontal (+/- 40°)
Lens	1.3x Manual optical zoom / manual optical focus
Light Source Life, Normal (hours)	20000
Light Source Life, Dynamic Eco-Mode (hours)	20000
Color Depth	1.07B Color (R/G/B 10bit)
Dynamic Contrast Ratio	3,000,000:1
Aspect Ratio	16:9
Input Lag	37ms
Frequency Horizontal	15K~102KHz
Frequency Vertical	23~120Hz
PC Resolution (max)	1920 x 1080
Mac® Resolution (max)	1920 x 1080
USB 2.0 Type A	1
Ethernet LAN (RJ45)	1
3.5mm Audio Out	1
3.5mm Audio In	1
Control (RS232)	1
HDMI 1.4 (with HDCP 1.4)	2
VGA In	2
VGA Out	1
Composite RCA Video In	1
Mini USB	1
Internal Speakers	2W (x1)
Voltage	100-240V+/- 10%, 50/60Hz AC
Consumption (typical)	260W
Stand-by	<0.5W
Physical Controls	Power, keystone/arrow keys, left/blank, menu/exit, right/panel key lock, mode/enter, auto, source

On Screen Display	Display, Image, Power Management, Basic, Advanced, System, Information (See user guide for full OSD functionality)
Temperature	32-104° F (0 - 40° C)
Humidity (non-condensing)	0-90%
Kensington Lock Slot	1
Net (lbs)	15.7
Gross (lbs)	20.1
Net (kg)	7.1
Gross (kg)	9.1
Packaging (in.)	19.7 x 6.2 x 15.8
Physical (in.)	15.6 x 6.2 x 12.4
Packaging (mm)	500.4 x 157.5 x 401.3
Physical (mm)	396.0 x 157.0 x 314.0
Regulations	FCC, cTUVus, ROHS
Package Contents	LS700HD Projector, Power Cable, VGA Cable, Remote Control, Quick Start Guide
Warranty	Three-year limited warranty on parts and labor, 1st year free Express Exchange® service. (One year Express Exchange Service requires product registration).

UPC: 766907981216



Contact Sales

ViewSonic.com

888.881.8781

email:

salesinfo@viewsonic.com