

## PS600W - 3700 LUMENS WXGA NETWORKABLE SHORT THROW PROJECTOR

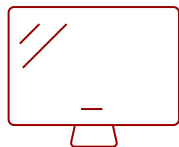
### Key Features

---

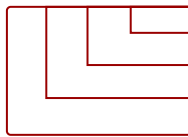
- High brightness 3700 Lumens WXGA projector with 0.61 short throw and advanced visual features
- 0.61 throw ratio, H/V keystone and corner adjustment for flexible setup
- SuperEco Mode allows the lamp to shine bright for up to 15,000 hours
- 6 segment color wheel and dynamic lamp control capabilities provide vivid colors
- A low 16ms input latency provides faster frame-by-frame action for smooth images without delay
- Supports most media players, PCs, Macs, and mobile devices with inputs such as Dual HDMI, USB, Ethernet LAN



30 - 300 in. / 0.76 - 7.62 m  
**DISPLAY**



**PANEL**



1920 x 1080  
**RESOLUTION**



### Product Description

---

The ViewSonic® PS600W networkable projector features 3,700 lumens, native WXGA 1280x800 resolution, and an intuitive, user-friendly design. Exclusive SuperColor™ technology offers a wide color gamut for beautiful image production in nearly any environment, and a 10W speaker delivers incredibly clear and audible sound. A short throw lens with a 0.49 throw ratio offers large projection images for smaller rooms. With HV keystone, corner adjustment, and easy network management, the PS600W provides flexible setup. Designed with smarter features and extensive connectivity, the networkable short throw PS600W is ideal for use in education and corporate environments.

### Specifications

---

<b>UPC</b>	766907958416
<b>Light Source</b>	DLP Lamp
<b>Display Resolution</b>	WXGA (1280x800)
<b>Display Resolution</b>	1280 x 800
<b>Brightness (Lumens)</b>	3,700 ANSI
<b>Screen Size</b>	30 - 300 in. / 0.76 - 7.62 m
<b>Throw Distance</b>	2.1 - 6.2 ft / 0.6 - 1.9 m
<b>Throw Ratio</b>	0.5
<b>Keystone</b>	Vertical (+/- 40º) / Horizontal (+/- 26º)
<b>Lens</b>	Fixed Zoom
<b>Light Source (watt)</b>	200
<b>Light Source Life, Normal (hours)</b>	5000
<b>Light Source Life, Dynamic Eco-Mode (hours)</b>	15000
<b>Color Depth</b>	1.07B Color (R/G/B 10bit)
<b>Dynamic Contrast Ratio</b>	22,000:1
<b>Aspect Ratio</b>	16:10
<b>Input Lag</b>	37ms
<b>Frequency Horizontal</b>	15K~102KHz
<b>Frequency Vertical</b>	23~120Hz
<b>PC Resolution (max)</b>	1920 x 1080
<b>PC Resolution (min)</b>	640 x 480
<b>Mac® Resolution (max)</b>	1920 x 1080
<b>Mac® Resolution (min)</b>	640 x 480
<b>USB 2.0 Type A</b>	1
<b>Ethernet LAN (RJ45)</b>	1
<b>3.5mm Audio Out</b>	1
<b>3.5mm Audio In</b>	1
<b>Control (RS232)</b>	1
<b>HDMI 1.4 In</b>	2
<b>VGA In</b>	2
<b>VGA Out</b>	1
<b>Composite RCA Video In</b>	1
<b>Mini USB</b>	1
<b>Internal Speakers</b>	10W (x1)
<b>Voltage</b>	100-240V+/- 10%, 50/60Hz AC
<b>Consumption (typical)</b>	260W

<b>Stand-by</b>	<0.5W
<b>Physical Controls</b>	Power, keystone/arrow keys, left/blank, menu/exit, right/panel key lock, mode/enter, auto, source
<b>On Screen Display</b>	Display, Image, Power Management, Basic, Advanced, System, Information (See user guide for full OSD functionality)
<b>Temperature</b>	32-104° F (0 - 40° C)
<b>Humidity (non-condensing)</b>	0-90%
<b>Kensington Lock Slot</b>	1
<b>Net (lbs)</b>	5.7
<b>Gross (lbs)</b>	7.2
<b>Net (kg)</b>	2.6
<b>Gross (kg)</b>	3.3
<b>Packaging (in.)</b>	14.4 x 7.4 x 11.8
<b>Physical (in.)</b>	11.5 x 4.5 x 9.3
<b>Packaging (mm)</b>	365.0 188.0 x 300.0
<b>Physical (mm)</b>	292.0 x 115.0 x 236.0
<b>AV Control</b>	AMX Certified, ATEN Certified, Crestron Certified, PJ Link Certified
<b>Regulations</b>	FCC, cTUVus, ROHS
<b>Package Contents</b>	PS600W projector, power cable, VGA cable, remote control, Quick Start Guide
<b>Warranty</b>	Three-year limited warranty on parts and labor, 1-year limited warranty on lamp, 1st year free Express Exchange® service. (One year Express Exchange Service requires product registration).
<b>Recycle/Disposal</b>	Please dispose of in accordance with local, state or federal laws.

UPC: 766907958416



## Contact Sales

[ViewSonic.com](http://ViewSonic.com)

888.881.8781

email:

[salesinfo@viewsonic.com](mailto:salesinfo@viewsonic.com)