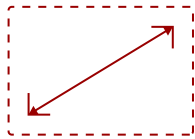


## VA2459-SMH - 24" 1080P IPS MONITOR WITH FREESYNC, HDMI AND VGA INPUTS

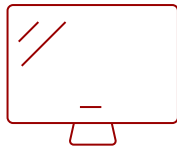
### Key Features

---

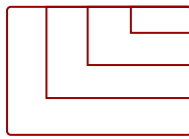
- 24 Inch Full HD (1920x1080p) IPS monitor with 60Hz refresh rate
- Flicker-Free technology and Blue Light Filter for reduced eye fatigue
- Optimized view settings offer "Game," "Movie," "Web," "Text," and "Mono" presets
- The VA2459-SMH supports laptops, PCs, Macs and more with HDMI, and VGA inputs



24  
**DISPLAY**



IPS  
**PANEL**



1920 x 1080  
**RESOLUTION**



### Product Description

---

With flexible connectivity, wide-angle viewing, and amazing screen performance, the ViewSonic® VA2459-smh delivers solid multimedia features and a sleek design at a great value. Featuring SuperClear IPS panel technology, the 24" VA2459-smh delivers stunning brightness and contrast at nearly any viewing angle. A minimalistic design, edge-to-edge screen, and frameless bezel make this an ideal monitor for nearly seamless multi-screen setups. Whether for working at the office, or enjoying entertainment at home, the VA2459-smh also features an HDMI port for flexible connectivity to PCs, laptops, gaming consoles, and other multimedia devices. Flicker-Free technology and a Blue Light Filter help to minimize eyestrain from extended viewing periods. In addition, a 3-year limited warranty, along with one of the industry's best pixel performance policies, makes the VA2459-smh a great overall value choice.

### Specifications

---

<b>UPC</b>	766907888935
<b>Screen Size</b>	24
<b>Viewable Area (in.)</b>	23.8
<b>Panel Type</b>	IPS
<b>Display Resolution</b>	1920 x 1080
<b>Display Resolution</b>	Full HD (1920x1080)
<b>Static Contrast Ratio</b>	1,000:1
<b>Dynamic Contrast Ratio</b>	50,000,000:1
<b>Light Source</b>	LED
<b>Brightness</b>	250 cd/m2
<b>Colors</b>	16.7M
<b>Aspect Ratio</b>	16:9
<b>Response Time (GTG w/OD)</b>	4ms
<b>Viewing Angles</b>	178º horizontal, 178º vertical
<b>Backlight Life (Hours)</b>	30,000
<b>Panel Surface</b>	Anti-glare
<b>PC Resolution (max)</b>	1920 x 1080
<b>Mac® Resolution (max)</b>	1920 x 1080
<b>3.5mm Audio In</b>	1
<b>3.5mm Audio Out</b>	1
<b>HDMI In</b>	1
<b>VGA</b>	1
<b>Internal Speakers</b>	2W (x2)
<b>Eco Mode (Conserve)</b>	11W
<b>Eco Mode (optimized)</b>	14W
<b>Consumption (typical)</b>	17W
<b>Consumption (max)</b>	24W
<b>Voltage</b>	AC 100-240V (universal), 50-60Hz
<b>Stand-by</b>	0.5W
<b>Power Supply</b>	Internal
<b>Cable Organization</b>	No
<b>Kensington Lock Slot</b>	1
<b>Physical Controls</b>	Key 1 (favorite), Key 2, Key 3, Key 4, Key 5 (power)
<b>On Screen Display</b>	Input Select, Audio Adjust, ViewMode, Color Adjust, Manual Image Adjust, Setup Menu
<b>Temperature</b>	32-104º F (0 - 40º C)
<b>Humidity (non-condensing)</b>	20-90%

<b>VESA Compatible</b>	100 x 100 mm
<b>Frequency Horizontal</b>	24 ~ 86KHz
<b>Frequency Vertical</b>	48 ~ 75Hz
<b>Digital Sync</b>	TMDS
<b>Net (lbs)</b>	6.8
<b>Net Without Stand (lbs)</b>	6.2
<b>Gross (lbs)</b>	9.7
<b>Net (kg)</b>	3.1
<b>Net Without Stand (kg)</b>	2.8
<b>Gross (kg)</b>	4.4
<b>Packaging (in.)</b>	24.5 x 16.3 x 5.5
<b>Physical (in.)</b>	21.4 x 15.6 x 7.9
<b>Physical Without Stand (in.)</b>	21.4 x 12.5 x 1.9
<b>Packaging (mm)</b>	622.0 x 413.0 x 140.0
<b>Physical (mm)</b>	542.0 x 396.0 x 200.0
<b>Physical Without Stand (mm)</b>	542.0 x 318.0 x 48.0
<b>Regulations</b>	cTUVus, FCC-B, ICES003, Energy Star 8.0, EPEAT Silver, CEC, NOM, Mexico Energy, CB, RoHS
<b>Package Contents</b>	VA2459-SMH x1, 3-pin Plug (IEC C13 / CEE22) x1, HDMI Cable (v1.4; Male-Male) x1, Quick Start Guide x1
<b>Recycle/Disposal</b>	Please dispose of in accordance with local, state or federal laws.
UPC: 766907888935	



## Contact Sales

[ViewSonic.com](http://ViewSonic.com)

888.881.8781

email:

[salesinfo@viewsonic.com](mailto:salesinfo@viewsonic.com)