

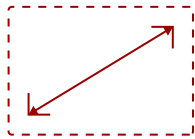
## VA2452SM - 24" 1080P LED MONITOR DISPLAYPORT, DVI AND VGA INPUTS

### Key Features

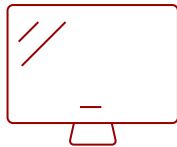
- Full HD 1080p resolution
- Stunning color performance & wide-angle viewing
- Flexible connectivity options
- Superior color rendering & intuitive settings
- Enhanced viewing comfort



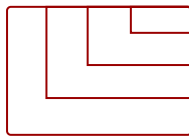
What's in the box.



24  
DISPLAY



MVA  
PANEL



1920 x 1080  
RESOLUTION



VA2452SM Monitor



Power Cable\*



VGA Cable



QuickStart Guide

\*Power Cable varies by region

### Product Description

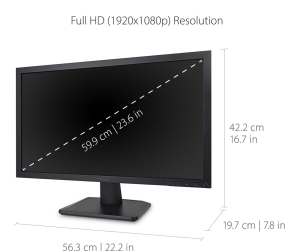
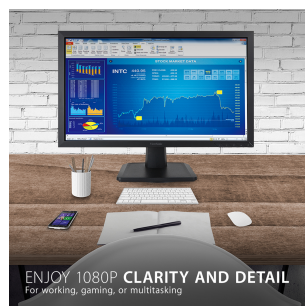
The ViewSonic VA2452Sm is a 24" (23.6" viewable) Full HD 1920x1080 LED monitor designed with business professionals in mind. With ViewSonic SuperClear MVA panel technology and 3000:1 static contrast ratio, this monitor delivers an incredible front-of-screen work experience at nearly any viewing angle. Versatile input options include future-proof DisplayPort, as well as DVI and VGA inputs, for productivity-boosting connectivity to PC systems, laptops, and other work devices. A matte-finish, uniform bezel design and a VESA-compatible mount adapt easily to multi-monitor or wall-mount set ups, while integrated speakers deliver enhanced multimedia sound. ViewSonic's exclusive ViewMode feature provides intuitive presets that deliver optimized screen performance in different applications. In addition, Flicker-Free technology and a Blue Light Filter help to eliminate eye strain from extended viewing periods for improved productivity. Lastly, a 3-year limited warranty, along with one of the industry's best pixel performance policies, provides great value for the stylish, high-performance VA2452Sm monitor.

# Specifications

	More Information
UPC	766907810622
Screen Size	24
Viewable Area (in.)	23.6
Panel Type	MVA
Display Resolution	1920 x 1080
Static Contrast Ratio	3,000:1
Light Source	LED
Brightness	250 cd/m2
Colors	16.7M
Response Time (Typical GTG)	7ms
Viewing Angles	178º horizontal, 178º vertical
Backlight Life (Hours)	40,000
Panel Surface	3H Anti-glare, hard-coating
PC Resolution (max)	1920 x 1080
Mac® Resolution (max)	1920 x 1080
3.5mm Audio In	1
3.5mm Audio Out	1
VGA	1
DVI-D	1
DisplayPort	1
Internal Speakers	1.5-watt (x2)
Eco Mode (Conserve)	15W
Eco Mode (optimized)	19W
Consumption (typical)	23W
Consumption (max)	30W
Voltage	AC 100-240V (universal), 50-60Hz
Cable Organization	No
Kensington Lock Slot	1
Physical Controls	1, 2, Down, Up, Power
On Screen Display	Auto Image Adjust, Contrast/Brightness, Input Select, Audio Adjust, Color Adjust, Information, Manual ImageAdjust, Setup Menu, Memory Recall(See user guide for complete OSD functionality)
Humidity (non-condensing)	20-90%
VESA Compatible	100 x 100 mm

<b>Frequency Horizontal</b>	24~82kHz
<b>Frequency Vertical</b>	50~75Hz
<b>Analog Sync</b>	Separate Sync
<b>Net (lbs)</b>	8.6
<b>Net Without Stand (lbs)</b>	7.8
<b>Gross (lbs)</b>	11.1
<b>Net (kg)</b>	3.9
<b>Net Without Stand (kg)</b>	3.5
<b>Gross (kg)</b>	5
<b>Packaging (in.)</b>	24.3 x 16.1 x 4.9
<b>Physical (in.)</b>	22.2 x 16.6 x 7.8
<b>Physical Without Stand (in.)</b>	22.2 x 13.2 x 4.9
<b>Packaging (mm)</b>	616.0 x 409.0 x 124.0
<b>Physical (mm)</b>	563.0 x 421.7 x 196.8
<b>Physical Without Stand (mm)</b>	563.0 x 335.0 x 49.5
<b>Regulations</b>	cTUVus, FCC-B, ICES003, UL-MX-CoC, Mexico Energy, Reach, WEEE
<b>Package Contents</b>	VA2452Sm monitor, Power cable, DisplayPort cable, Quick Start Guide
<b>Recycle/Disposal</b>	Please dispose of in accordance with local, state or federal laws.

UPC: 766907810622



**Contact Sales**  
**[ViewSonic.com](http://ViewSonic.com)**  
888.881.8781  
email:  
[salesinfo@viewsonic.com](mailto:salesinfo@viewsonic.com)