

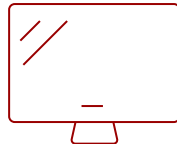
LS741HD - 5,000 ANSI LUMENS 1080P LASER INSTALLATION PROJECTOR

Key Features

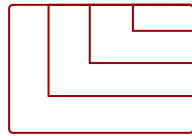
- 1. -lasting laser phosphor light source
- 2. o 5,000 ANSI lumens of brightness
- 3. y images up to 300"
- 4. ced weight and size compared to earlier generations
- 5. ible installation options
- 6. rehensive LAN control



30 - 300 in. / 0.76 - 7.62 m
DISPLAY



PANEL



VGA(640 x 480) to WUXGA_RB(1920 x 1200)*RB-
Reduced Blanking
RESOLUTION



Product Description

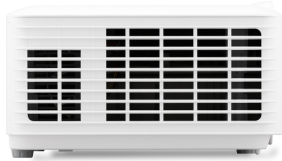
Bring powerful clarity to every presentation with the ViewSonic® LS741HD laser projector. Featuring the latest laser phosphor technology, this projector delivers 5,000 ANSI lumens of brightness, for sharp images even in environments with strong ambient lighting. Enjoy a maintenance-free projection experience without having to deal with complicated lamp replacements. Plus, this eco-friendly projection solution also features a compact design for easier transportation. This projector is capable of creating images up to 300" in 1080p Full HD resolution, making it perfect for boardrooms, lecture halls, auditoriums, and other large spaces. Enjoy easier setup and versatile usage across a wide variety of scenarios with features including 1.6x optical zoom, LAN control, H/V keystone, 4-corner adjustment, 360° projection, portrait mode and more.

Specifications

UPC	766907026092
Light Source	Laser
Display Resolution	Full HD (1920x1080)
Display Resolution	1920 x 1080
Brightness (Lumens)	5,000 ANSI
Screen Size	30 - 300 in. / 0.76 - 7.62 m
Throw Distance	0.93-14.88m ; 3-48.8ft (100"@10.17ft)
Throw Ratio	1.4-2.24
Keystone	Vertical ($\pm 30^\circ$) / Horizontal ($\pm 30^\circ$)
Light Source Life, Normal (hours)	20000
Light Source Life, Dynamic Eco-Mode (hours)	30000
Color Depth	1.07 Billion Colors
Dynamic Contrast Ratio	3,000,000:1
Aspect Ratio	16:9
Frequency Horizontal	15K-102KHz
Frequency Vertical	24-120Hz
PC Resolution (max)	VGA(640 x 480) to WUXGA_RB(1920 x 1200)*RB-Reduced Blanking
Mac® Resolution (max)	480i, 480p, 576i, 576p, 720p, 1080i, 1080p
USB 2.0 Type A	1 (5V/1.5A) Power, Service
Ethernet LAN (RJ45)	1
3.5mm Audio Out	1
Control (RS232)	1
HDMI 1.4 (with HDCP 1.4)	2
Internal Speakers	15W (x1)
Voltage	Input: 100~240V & Output: 19.5VDC / 11.79A
Consumption (typical)	210W
Stand-by	<0.5W
Physical Controls	Keypad, Power key
On Screen Display	Display, Image, Power Management, Basic, Advanced, System, Information (See user guide for full OSD functionality)
Temperature	32-104° F (0 - 40° C)
Kensington Lock Slot	1
Net (lbs)	6.62
Gross (lbs)	10.36
Net (kg)	3
Gross (kg)	4.7

Packaging (in.)	15.7x11x6.1in
Physical (in.)	11.3x8.5x5 in
Packaging (mm)	400x280x155mm
Physical (mm)	286x216x129mm
Regulations	cTUVus
Package Contents	Projector, power cable, remote control, Quick Start Guide,
Warranty	Three-year limited warranty on parts and labor, 1st year free Express Exchange® service. (One year Express Exchange Service requires product registration).
Recycle/Disposal	Please dispose of in accordance with local, state or federal laws.

UPC: 766907026092



Contact Sales

ViewSonic.com

888.881.8781

email:

salesinfo@viewsonic.com