

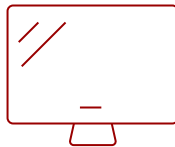
TD2211 - 22" 1080P SINGLE POINT RESISTIVE TOUCH MONITOR WITH USB, HDMI, DVI AND VGA

Key Features

- Industrial-grade touch display ideal for commercial use
- Greater clarity with SuperClear® MVA panel technology
- Flexible connectivity with HDMI, DVI and VGA ports
- Supports laptops, PCs, Macs and POS Systems



22
DISPLAY



MVA
PANEL



1920 x 1080
RESOLUTION



Product Description

Featuring a robust 22" touchscreen, the ViewSonic® TD2211 touch display is ideal for use in retail, POS and commercial environments.

Each display comes equipped with resistive touch technology, making it responsive to hands, gloves and styluses alike.

The TD2211 combines Full HD resolution with a 20M:1 dynamic contrast ratio to deliver crystal clear images.

Enjoy flexible connectivity options including HDMI, VGA, DVI and USB ports as well as a VESA-compatible mount design that makes it easy to transform your device into a wall mounted display.

Specifications

| | More Information |
|------------------------------------|---|
| UPC | 766907022988 |
| Screen Size | 22 |
| Viewable Area (in.) | 21.5 |
| Display Resolution | 1920 x 1080 |
| Static Contrast Ratio | 3,000:1 |
| Dynamic Contrast Ratio | 20,000,000:1 |
| Brightness | 250 cd/m2 |
| Backlight Life (Hours) | 30,000 |
| Response Time (Typical GTG) | 6.8ms |
| Panel Type | MVA |
| Colors | 16.7M |
| Color Space Support | 8 bits |
| Viewing Angles | 178° horizontal, 178° vertical |
| Light Source | LED |
| Panel Surface | Anti-Glare type, Hard-coating (3H), Haze 25% |
| Aspect Ratio | 16:9 |
| Refresh Rate | 75Hz |
| PC Resolution (max) | 1920 x 1080 |
| Mac® Resolution (max) | 1920 x 1080 |
| Touch Technology | Resistive |
| Touch Points | 1-Point Touch |
| USB Type A | 2 |
| USB Type B | 1 |
| 3.5mm Audio In | 1 |
| 3.5mm Audio Out | 1 |
| VGA | 1 |
| DVI-D | 1 |
| HDMI 1.4 In | 1 |
| Internal Speakers | 2W (x2) |
| Frequency Horizontal | HDMI 1.4 = 24 ~ 84 KHz / RGB Analog / DVI-D = 24 ~ 82 KHz |
| Frequency Vertical | HDMI 1.4 / RGB Analog / DVI-D = 50 ~ 75 Hz |
| Eco Mode (Conserve) | 18w |
| Eco Mode (optimized) | 21w |

| | |
|-------------------------------------|---|
| Consumption (typical) | 23.5w |
| Consumption (max) | 26.8w |
| Voltage | 100-240 VAC, 50-60Hz |
| Stand-by | 0.5w |
| Physical Controls | 1, 2, Up, Down, Power |
| On Screen Display | Auto Image Adjust, Contrast/Brightness, Input Select, Audio Adjust, Color Adjust, Information, Manual Image Adjust, Setup Menu, Memory Recall |
| Temperature | 32-104° F (0 - 40° C) |
| Humidity (non-condensing) | 20-90% |
| Tilt (Forward/Back) | 5° / 20° |
| Kensington Lock Slot | 1 |
| VESA Compatible | 100 x 100 mm |
| Gross (kg) | 6.1 |
| Net (kg) | 4.4 |
| Net Without Stand (kg) | 3.5 |
| Net (lbs) | 9.6 |
| Net Without Stand (lbs) | 7.7 |
| Gross (lbs) | 13.4 |
| Packaging (mm) | 580 mm (W) x 445 mm (H) x 200 mm (D) |
| Physical (mm) | 519 mm (W) x 377 mm (H) x 240 mm (D) |
| Physical Without Stand (mm) | 519 mm (W) x 308 mm (H) x 55 mm (D) |
| Packaging (in.) | 22.8 " (W) x 17.5 " (H) x 7.9 " (D) |
| Physical (in.) | 20.4 " (W) x 14.8 " (H) x 9.4 " (D) |
| Physical Without Stand (in.) | 20.4 " (W) x 12.1 " (H) x 2.2 " (D) |
| Regulations | cTUVus, FCC-B, ICES003, Energy Star, EPEAT Silver, CEC, NOM, Mexico Energy |
| Package Contents | LCD Display, Power Cable, HDMI Cable, USB Type A/B cable, Audio Cable, Quick Start Guide |
| Warranty | Three-year limited warranty on parts, labor and backlight |
| Recycle/Disposal | Please dispose of in accordance with local, state or federal laws. |

UPC: 766907022988



Contact Sales
ViewSonic.com

888.881.8781
 email:
salesinfo@viewsonic.com