

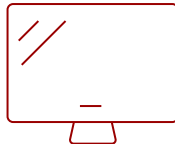
IFP6533-G - 65" VIEWBOARD INTERACTIVE DISPLAY WITH INTEGRATED USB-C

Key Features

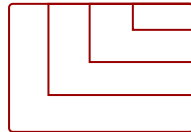
- **ULTRA HD RESOLUTION:** 65 Inch 4K Ultra HD (3840x2160p) interactive display
- **ADVANCED TOUCH:** 40-point multi-touch lets users write on the display with their fingers and stylus pens
- **INTEGRATED SOFTWARE:** The myViewBoard suite includes Whiteboard, ViewBoard Cast, and more for better engagement
- **UPGRADED OPERATING SYSTEM:** Android 11 operating system
- **FLEXIBLE CONNECTIVITY:** Include powerful quad-core processor and versatile connectivity options (HDMI,VGA, RJ45, and USB ports)
- **REMOTE MANAGEMENT:** Schedule updates and monitor device status with the built-in myViewBoard® Manager software
- **PEACE OF MIND:** Industry-leading 3-year standard warranty with optional extensions and robust support services



65
DISPLAY



PANEL



RESOLUTION



Product Description

The ViewSonic® ViewBoard® IFP6533-G is a 65" interactive display with next-generation whiteboard technologies ideal for collaboration in classroom environments, meeting rooms or interactive huddle spaces. With a high-accuracy touchscreen and intelligent IR recognition technology, the IFP6533-G delivers an intuitive digital whiteboard experience. Featuring 4K Ultra HD resolution, this ViewBoard display delivers optimal images for everyone in the room as well those calling in remotely. With the integrated ViewSonic software suite, this ViewBoard display enables easy content sharing and interactive presentations.

Specifications

More Information

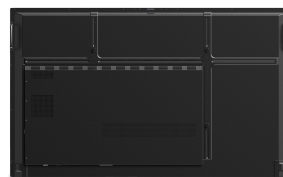
UPC

766907024289

OS	ViewBoard OS based on Android 11
CPU	Quad-core Arm Cortex (A55*4)
Memory	8GB DDR4
Storage	128GB eMMC
Internal Speakers	16W (x2)
HDMI 2.0 In	3
HDMI Out	1
VGA	1
3.5mm Audio In	1
3.5mm Audio Out	1
SPDIF	1
USB 3.0	4
USB 2.0	3
USB Type C	1
RS232	1
Ethernet LAN (RJ45)	1
Intel® OPS Slot In (80-pin)	1
Voltage	100-240 VAC
Consumption (typical)	99W (Energy Star)
Stand-by	<0.5W
Physical Controls	Power, Home, Back, Touch, Freeze, VOL-, VOL+
Temperature	32-104° F (0 - 40° C)
Humidity (non-condensing)	20-80%
Touch Technology	Infrared
Touch Points	Windows: 40, Android: 20
Tip Detection	3mm and 9mm
Other	Object Awareness
Net (lbs)	77.1
Gross (lbs)	98.5
Net (kg)	34.95
Gross (kg)	44.7
Packaging (in.)	64 x 8.1 x 39.5
Physical (in.)	58.6 x 35.3 x 3.4
Packaging (mm)	1628 x 208 x 1005
Physical (mm)	1488.3 x 896.6 x 85.3
VESA Compatible	600 x 400 mm

Screw Size	M8
Warranty	3-year limited warranty on parts, labor and backlight, onsite warranty
Recycle/Disposal	Please dispose of in accordance with local, state or federal laws.
Package Contents	3m power cord, Remote control with AAA battery, 3m touch USB cable, Touch pen x2 (VB-PEN-009), Quick Start Guide + Compliance statement, RS232 adapter x1, Clamp x5, Camera Plate x1, Screw x8 (camera 2+2, wall mount 4), HDMI cable 3m (HDMI LA certified)
Regulations	FCC/ICES003 , Energy Star8.0,EPEAT
Ethernet LAN	(10/100/1000M) (USB Type-C 10/100, Android & PC 10/100/1000)
Wifi	Optional VB-WIFI-004 adapter, 802.11AX + Bluetooth 5.2
Display Type	LCD
Screen Size	65
Viewable Area (in.)	64.5
Light Source	DLED
Display Resolution	3840 x 2160
Refresh Rate	60Hz
Aspect Ratio	16:9
Static Contrast Ratio	1,200:1
Dynamic Contrast Ratio	5,000:1
Backlight Life (Hours)	50,000
Brightness	350 cd/m2
Response Time (Typical GTG)	8ms
Viewing Angles	178° horizontal, 178° vertical
Panel Surface	Anti-glare 9H tempered glass

UPC: 766907024289



Contact Sales
ViewSonic.com

888.881.8781 📞
 email:
salesinfo@viewsonic.com